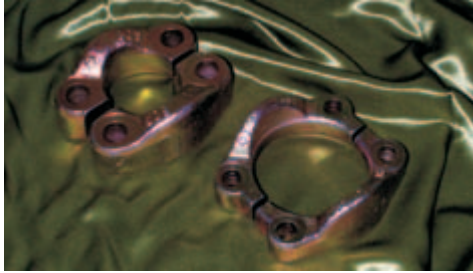


Split Flanges & Kits

For Code 61 (3,000 PSI) & Code 62 (6,000 PSI); Forged Steel Construction; Zinc Dichromate plated



DMIC Forged Steel Split Flanges are the quality-oriented choice when safety and design integrity override "price" in the project spec. Due to our high production volume, DMIC's 'FS' Split Flange Kits can net out within pennies of "econo" Split Flanges, with no quality compromises.

- ☑ Extensive stock in all **SAE J518** sizes up to 5" in Code 61, 2" in Code 62
- ☑ Bare "SN" flanges sold as halves, **for complete kit (2 halves plus hardware kit) simply change "SN" suffix to "SK"**

Split Flange Part Number	Working Pressure	Flange Pad	DIMENSIONS (inches)											O-Ring
			A	B	C	D	E	F	G	H	J	K	Lbs.	
'FSL' Split Flange Halves for Code 61 (3,000 PSI)														
FSL-0500SN	3,000 PSI	1/2" C.61	1.22	0.96	1.50	2.13	0.34	0.90	0.51	0.75	0.35	0.24	0.26	2-210
FSL-0750SN		3/4" C.61	1.53	1.26	1.88	2.56	0.44	1.02	0.55	0.87	0.42	0.24	0.35	2-214
FSL-1000SN		1" C.61	1.78	1.51	2.06	2.76	0.51	1.15	0.63	0.94	0.42	0.29	0.48	2-219
FSL-1250SN		1 1/4" C.61	2.03	1.72	2.31	3.11	0.59	1.43	0.55	0.87	0.47	0.29	0.66	2-222
FSL-1500SN		1 1/2" C.61	2.41	2.00	2.75	3.70	0.70	1.62	0.63	0.98	0.53	0.29	0.95	2-225
FSL-2000SN		2" C.61	2.84	2.47	3.06	4.02	0.84	1.90	0.63	1.02	0.53	0.36	1.23	2-228
FSL-2500SN	2,500 PSI	2 1/2" C.61	3.34	2.95	3.50	4.49	1.00	2.13	0.75	1.50	0.53	0.36	1.63	2-232
FSL-3000SN	2,000 PSI	3" C.61	4.03	3.58	4.19	5.31	1.22	2.57	0.87	1.61	0.69	0.36	2.86	2-237
FSL-3500SN	500 PSI	3 1/2" C.61	4.53	4.03	4.75	5.98	1.37	2.74	0.87	1.10	0.69	0.42	2.79	2-241
FSL-4000SN		4" C.61	5.03	4.53	5.13	6.38	1.53	2.99	0.98	1.38	0.69	0.42	3.63	2-245
FSL-5000SN		5" C.61	6.03	5.53	6.00	7.24	1.81	3.54	1.10	1.61	0.69	0.42	5.50	2-253
'FSH' Split Flange Halves for Code 62 (6,000 PSI)														
FSH-0500SN	6,000 PSI	1/2" C.62	1.28	0.97	1.59	2.20	0.36	0.93	0.63	0.87	0.35	0.29	0.35	2-210
FSH-0750SN		3/4" C.62	1.66	1.28	2.00	2.80	0.47	1.18	0.75	1.10	0.42	0.33	0.75	2-214
FSH-1000SN		1" C.62	1.91	1.53	2.25	3.19	0.55	1.37	0.94	1.30	0.47	0.36	1.12	2-219
FSH-1250SN		1 1/4" C.62	2.16	1.75	2.63	3.74	0.63	1.52	1.06	1.50	0.53	0.39	1.76	2-222
FSH-1500SN		1 1/2" C.62	2.53	2.03	3.13	4.45	0.72	1.87	1.18	1.69	0.69	0.48	3.17	2-225
FSH-2000SN		2" C.62	3.16	2.66	3.81	5.24	0.88	2.24	1.46	2.05	0.83	0.48	4.62	2-228

Ordering Codes for DMIC Split Flanges

SERIES: _____ **FSL** - **2000** **S** **K**
 Select Code 61 or 62

PAD SIZE: _____
 Expressed in 1/1000" units.

MATERIAL: _____

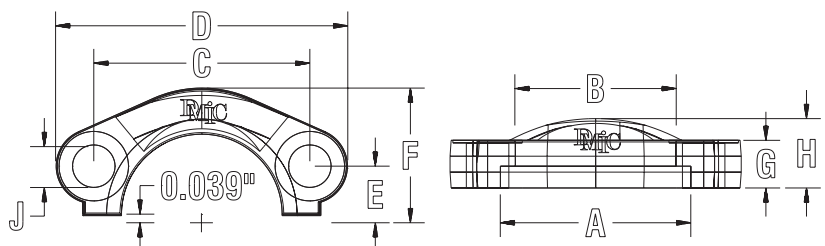
S: Forged Steel standard
Z: Stainless Steel

BARE or KIT SELECTOR: _____

N: Specifies **one BARE FLANGE HALF** only
K: **Two Flanges plus hardware.** See page 5 for options.



Dimensional Sketches



Installation Tips for DMIC Split Flange Kits

1. CHECK AND CLEAN MATING SURFACE

Verify that the O-Ring Groove is free of contamination and physical damage. Damaged surfaces or the presence of debris may result in leaks.

2. LUBRICATE & INSTALL O-RING, VERIFY HEAD TO FLANGE CONTACT.

Lubricate the O-Ring lightly, and seat into clean groove of Flange Head

fitting. Position and push clamp halves inward around flange head tightly.

3. TIGHTEN FOUR BOLTS KITTY KORNER

Tighten the bolts evenly in a reversing "Z" pattern to ensure even distribution of forces about the flange.

