

# BVDMF CAPTIVE DIRECT MOUNT BALL VALVE

## Round Body C.61/62/ANSI/DIN/DMIC

*Mounts between a pressure/inlet port and the connection flange for a low-profile, localized shutoff  
Models for 3000/6000 PSI ~ Sizes from ½" to 2 ½"*

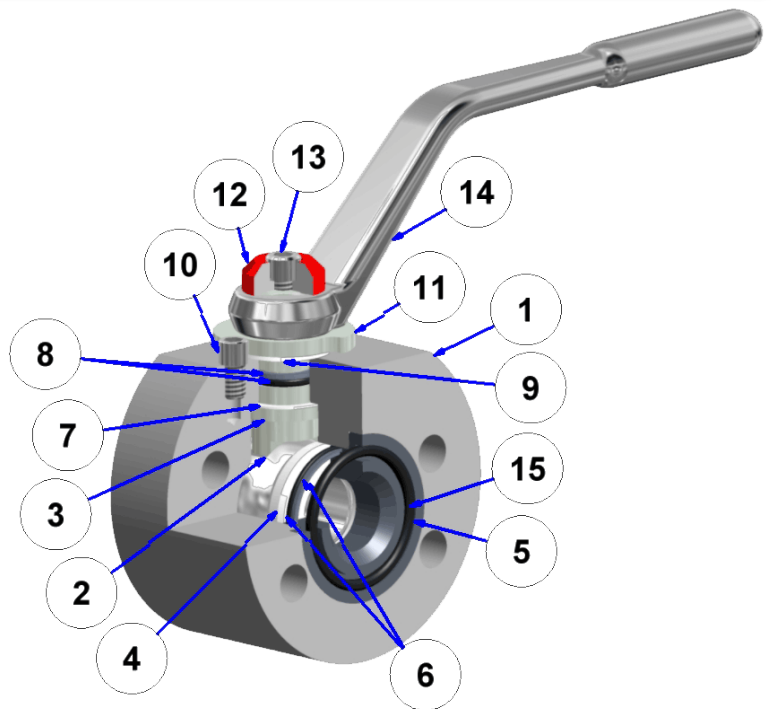
DMIC **BVDMF** is the most compact and lowest cost choice when an SAE 4-Bolt or Split Flange Connection is desired. Optional stainless steel construction, wide array of sealing & options.



- **Exclusive DMIC Spindle-Glide Design** features low torque and the high duty cycle durability that differentiates DMIC from ordinary valves
- **Delrin™ Ball Seals** and Buna-N standard elastomer seals, with all DMIC sealing options available for wide fluid compatibility range
- **Reduced bore for 1" + up allows for compact, lightweight design;** all Stainless Steel construction optional, with Buyer's choice of sealing
- Similar to BVDM but with a threaded C.61 or C.62 SAE 4-bolt Mounting Pad
- Available in aluminum, carbon and stainless steel construction

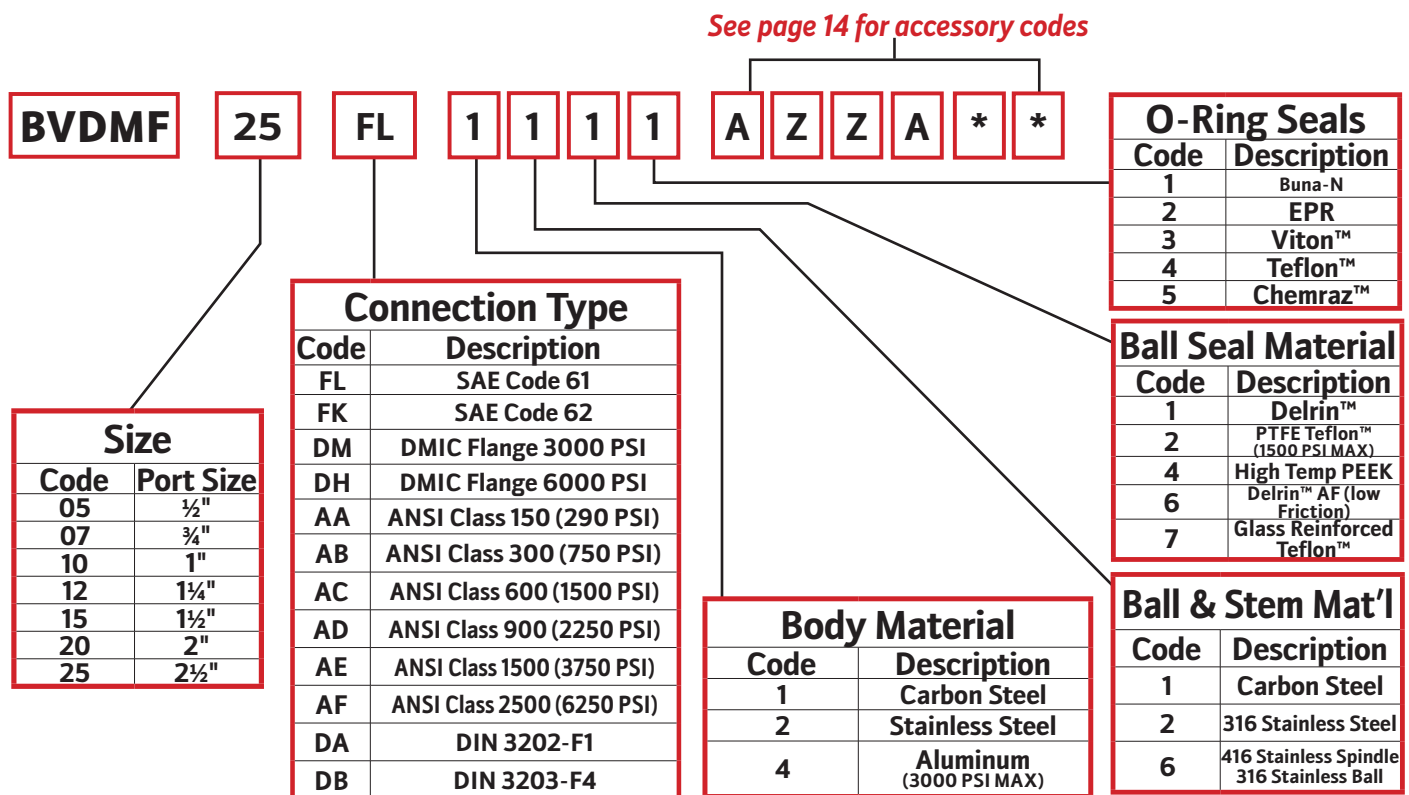
## Service Parts BOM

BVDMF	SERVICE PARTS BOM	
Index	Qty	Description
1	1	Valve Body
2	1	Ball
3	1	Spindle
4	2	Ball Seal
5	1	End Connection
6	1	End Connection O-Ring
7	1	Internal Thrust Washer
8	1	Spindle O-Ring
9	1	External Glide Washer
10	1	Stop Pin
11	1	Stop Washer
12	1	Color Code Cap
13	1	Top Cap Screw
14	1	Handle
15	1	Face O-Ring



# BVDMF CAPTIVE DIRECT MOUNT BALL VALVE

## Ordering Codes Summary



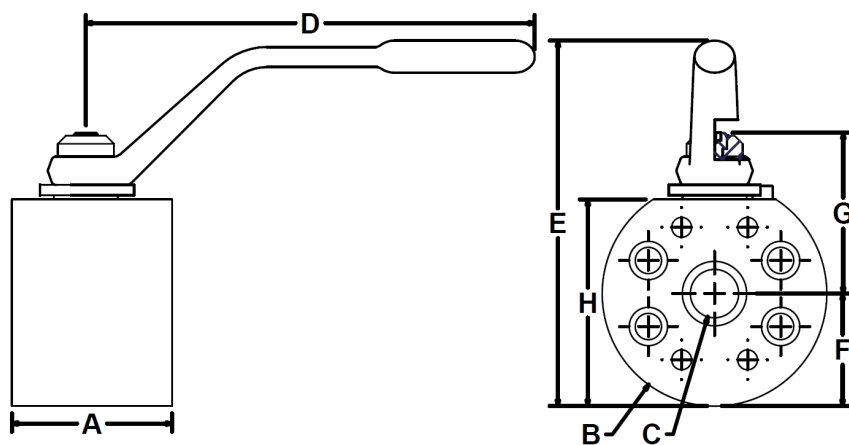
**Note:** Changes from Standard Materials may result in changes to temperature and/or pressure rating.

Due to our policy of continual product improvement, the specifications in this catalog may change without notice. When designing by spec, please request a certified print.



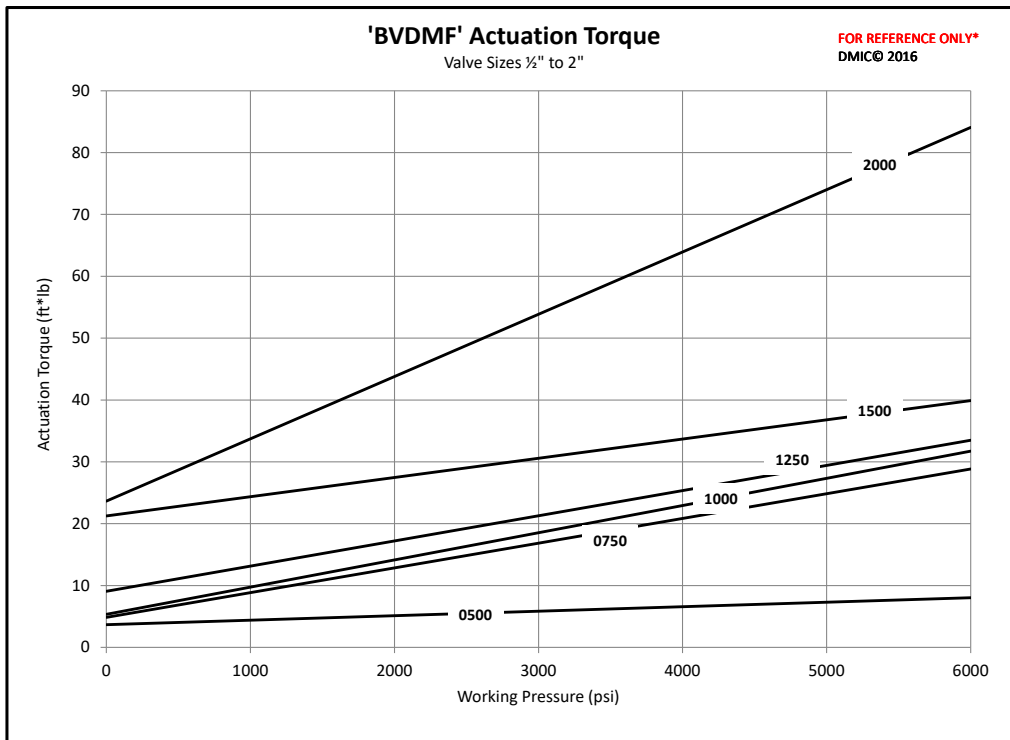
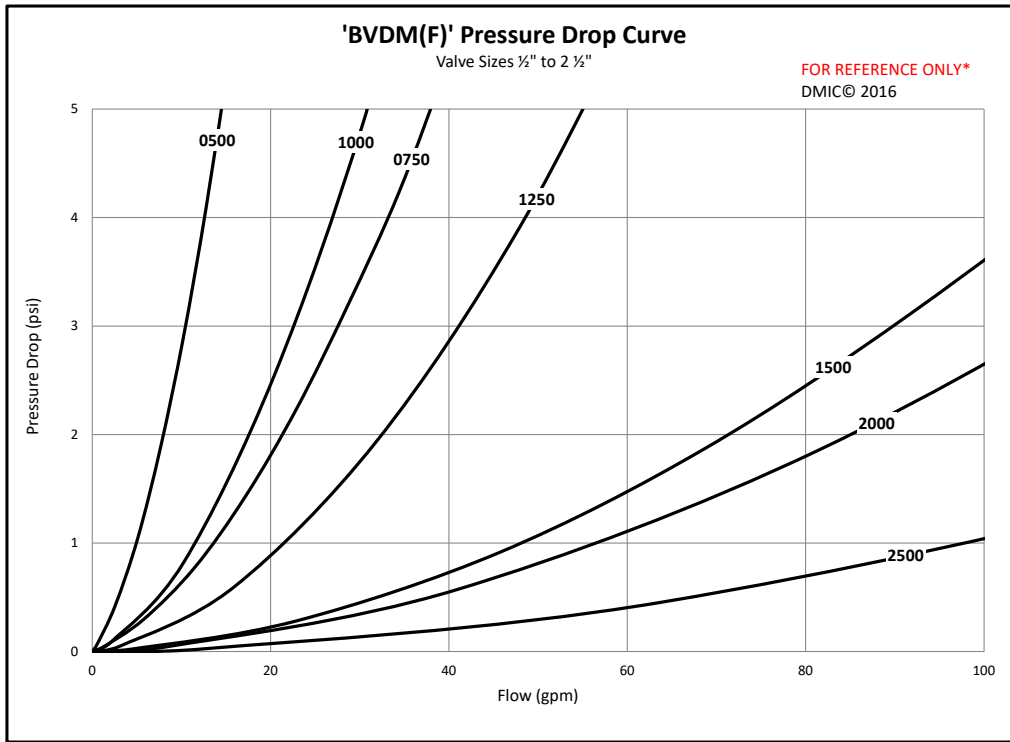
# BVDMF CAPTIVE DIRECT MOUNT BALL VALVE

BVDMF	Port Size	PSI Rating	Dimensions (inches)										
			A	ØB	ØC	D	E	F	G	H	J	Counterbore Depth	O-Ring
			Valve Length	Valve Width (Dia)	Valve Bore (Dia)	Handle Length	Overall Height	Port Ctr to Bottom	Port Ctr to Top	Valve Height	Bolt Size		
<b>BVDMF - **FL Code 61 Direct Mount, Round Body</b>													
BVDMF-05FL****	½"	5000 PSI	2.00	2.63	0.50	4.50	4.09	1.31	1.94	2.46	5/16"	0.33	2-210
BVDMF-07FL****	¾"		2.50	3.50	0.75	7.00	5.71	1.75	2.53	3.24	3/8"	0.39	2-214
BVDMF-10FL****	1"		2.50	3.50	0.75	7.00	5.70	1.75	2.50	3.22	3/8"	0.41	2-219
BVDMF-12FL****	1¼"	4000 PSI	3.00	4.00	0.94	7.00	6.09	2.00	2.66	3.62	7/16"	0.45	2-222
BVDMF-15FL****	1½"	3000 PSI	3.25	4.50	1.25	9.86	7.42	2.25	3.30	4.23	½"	0.53	2-225
BVDMF-20FL****	2"		3.50	5.00	1.50	9.86	7.98	2.50	3.61	4.79	½"	0.53	2-228
BVDMF-25FL****	2½"	2500 PSI	CALL FACTORY										
<b>BVDMF - **FK Code 62 Direct Mount, Round Body, 6000 PSI</b>													
BVDMF-05FK****	½"	6000 PSI	2.00	2.75	0.50	4.50	4.15	1.38	1.94	2.53	5/16"	0.33	2-210
BVDMF-07FK****	¾"		2.50	3.50	0.75	7.00	5.71	1.75	2.52	3.24	3/8"	0.39	2-214
BVDMF-10FK****	1"		2.50	3.75	0.75	7.00	5.96	1.88	2.66	3.49	7/16"	0.45	2-219
BVDMF-12FK****	1¼"		3.00	4.50	0.94	7.00	6.64	2.25	2.95	4.16	½"	0.52	2-222
BVDMF-15FK****	1½"		3.25	4.50	1.25	9.86	7.94	2.50	3.57	4.75	5/8"	0.66	2-225
BVDMF-20FK****	2"		4.25	6.00	1.50	9.86	8.86	3.00	3.99	5.67	¾"	0.78	2-228
BVDMF-25FK****	2½"		CALL FACTORY										



# BVDMF CAPTIVE DIRECT MOUNT BALL VALVE

## Flow Characteristic and Actuation Torque Curves



**Due to our policy of continual product improvement, the specifications in this catalog may change without notice. When designing by spec, please request a certified print.**

