

BVHHH ULTIMATE PRESSURE 15,000 PSI

DMIC'S 15,000 PSI Floating Ball Valve, ¼" to 2" Extreme Pressure Handling, Generous Engineering Factor

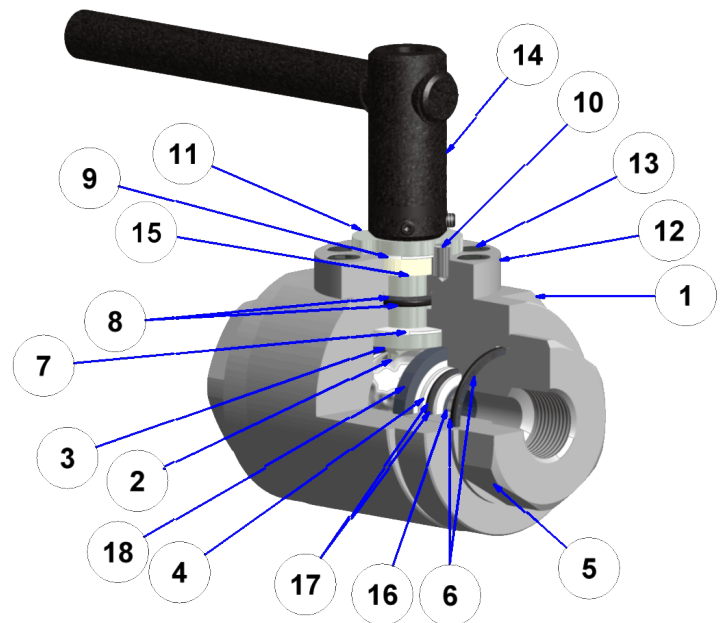


- Max Allowable working pressure up to 15,000 PSI with 3:1 engineering factor
- Special reinforcements prevent collapse of ball seals ensuring that most of DMIC's ball seal materials can be used
- Designed with DMIC's standard blowout-proof stem.
- Compatible with DMIC's wide array of accessories
- Call DMIC for application support or to place order

Service Parts BOM

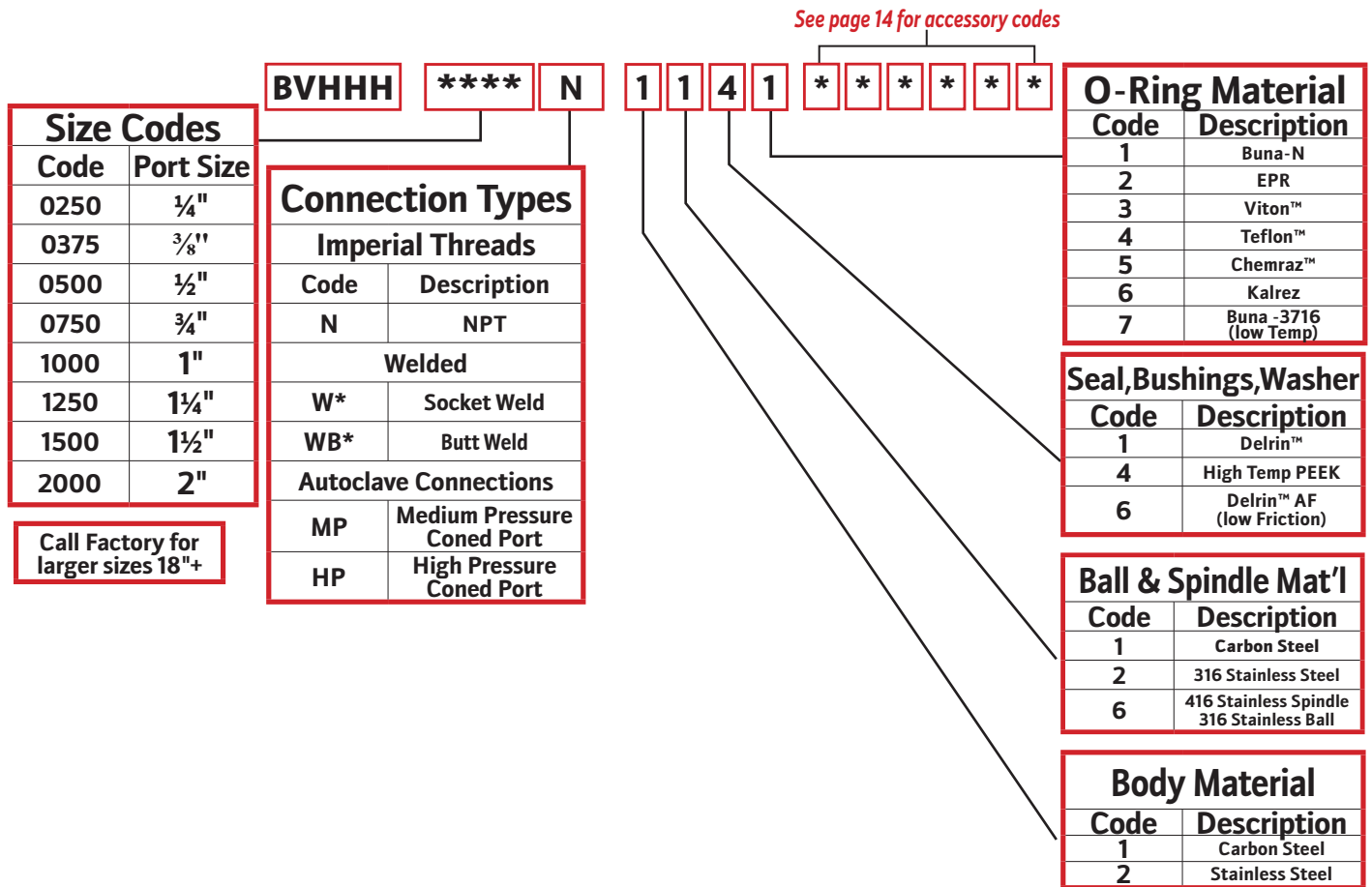
BVHHH		SERVICE PARTS BOM	
Index	Qty	Description	
1	1	Valve Body	
2	1	Ball	
3	1	Spindle	
4	2	Ball Seal	
5	2	End Connection	
6	2	End Connection O-Rings	
7	1	Internal Thrust Washer	
8	1	Spindle O-Rings	
9	1	External Glide Washer	
10	1	Stop Pin	
11	1	Stop Washer	
12	1	Top Cap	
13	*	Top Cap Bolts	
14	1	Handle	
15	1	Spindle Busing	
16	2	Inner Seal Support	
17	2	Ball Seal O-Rings	
18	2	Outer Seal Support	

* - Quantity depends on size and combination of body



BVHHH ULTIMATE PRESSURE 15,000 PSI

Ordering Codes Summary



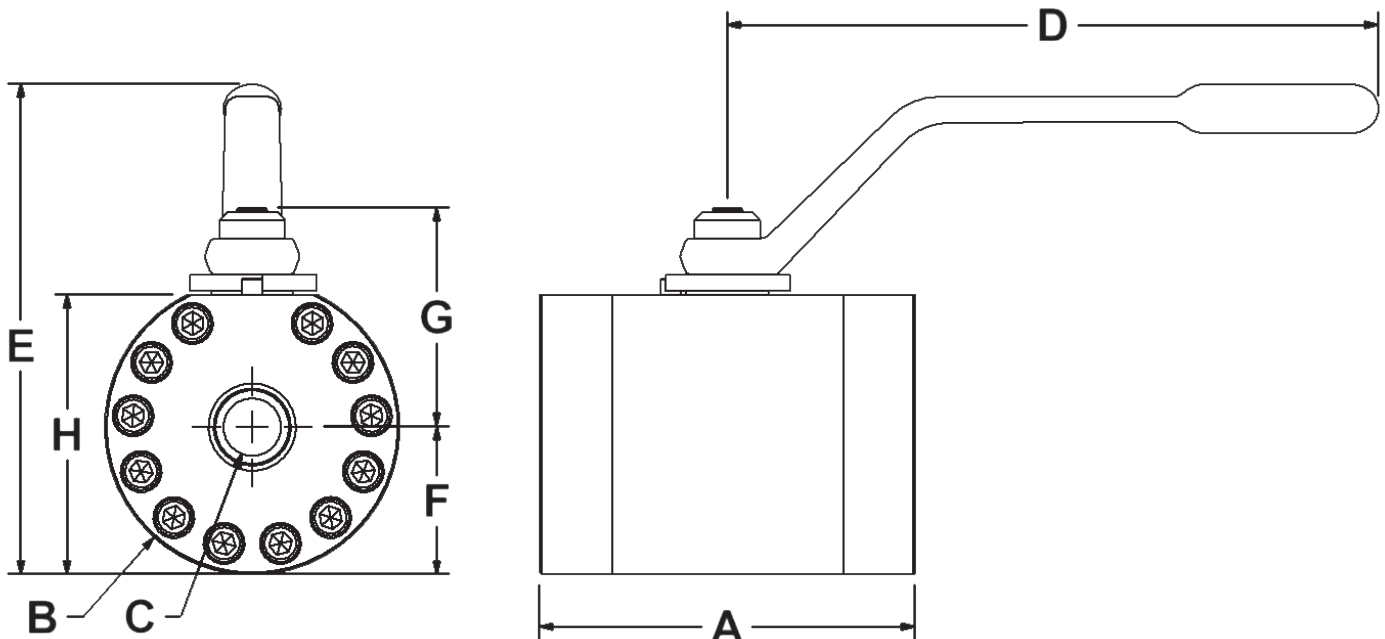
Note: Changes from Standard Materials may result in changes to temperature and/or pressure rating.



BVHHH ULTIMATE PRESSURE 15,000 PSI

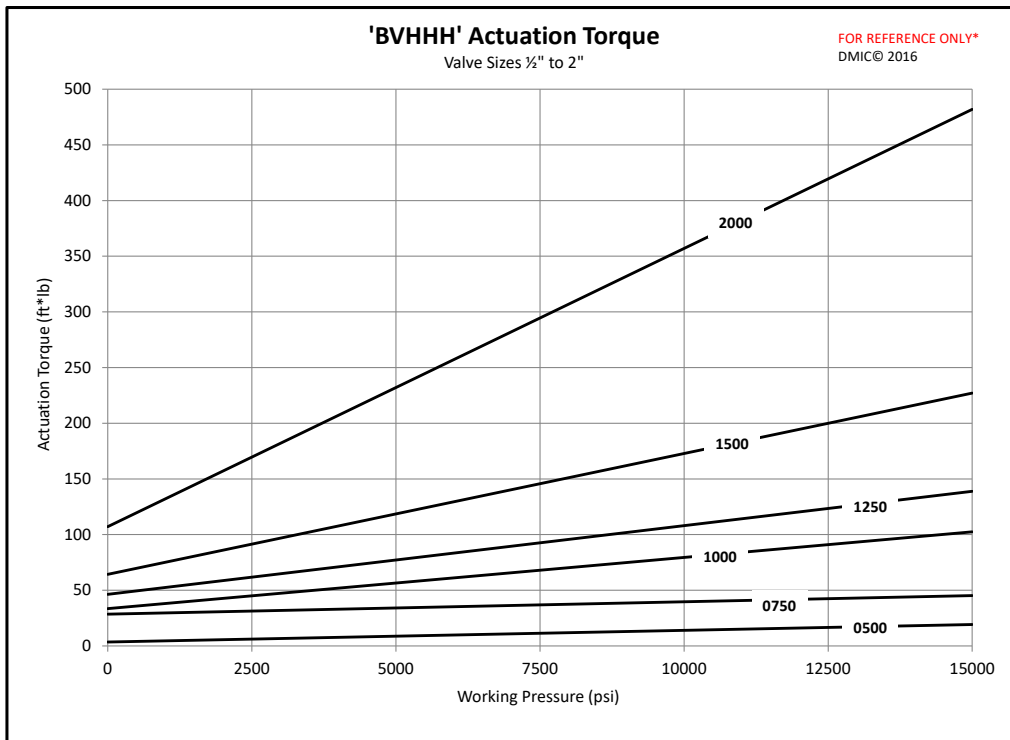
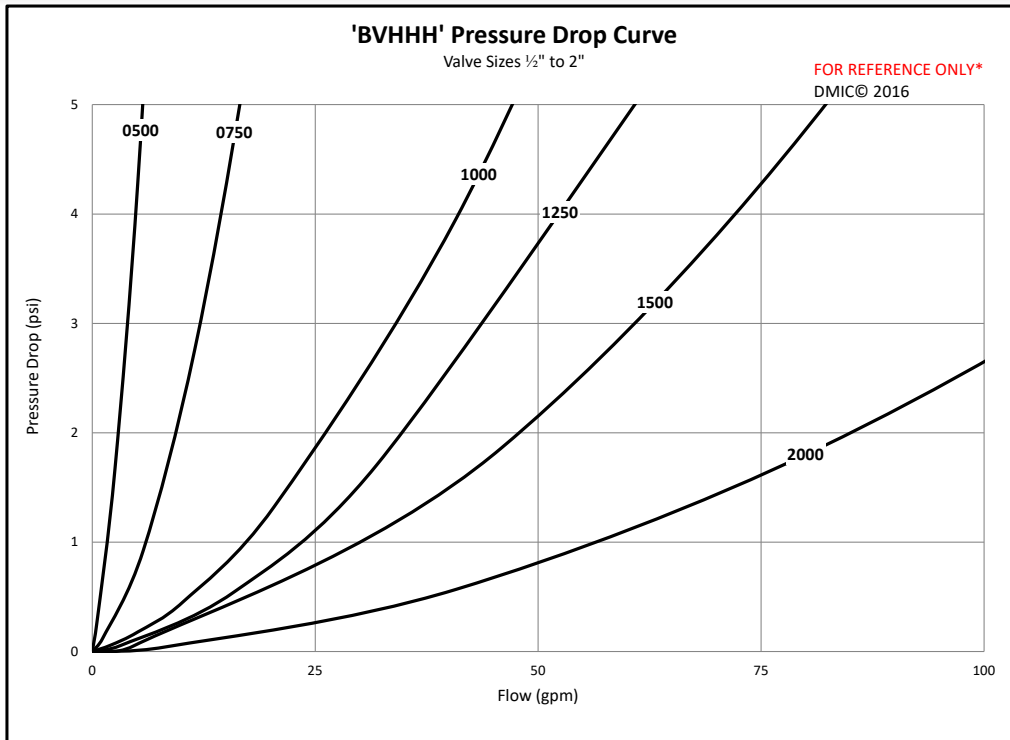
BVHHH	Ball Valve Dimensions (Threaded Connections Only)								
Port Code	Port Size	Valve Dimensions (in)							
		Valve Length A	Body Diameter B	Internal Bore C	Handle Length D	Overall Height E	Bottom to Center F	Center to Mounting Pad G	Bottom to Cap H
N Threaded Connection	½"	3.83	2.95	0.38	7.00	5.18	1.48	2.27	2.71
	¾"	Please Call DMIC At 1-800-248-DMIC							
	1"	5.69	4.47	0.88	9.86	7.43	2.24	3.32	4.24
	1¼"	Please Call DMIC At 1-800-248-DMIC							
	1½"								
	2"	8.25	7.20	1.50	12.00	10.26	3.60	4.96	6.86

N THREADED



BVHHH ULTIMATE PRESSURE 15,000 PSI

Flow Characteristic and Actuation Torque Curves



Due to our policy of continual product improvement, the specifications in this catalog may change without notice. When designing by spec, please request a certified print.

