

BVSS DUAL PATTERN SAE 4-BOLT BV, C.61 & 62

Replaces expensive and long-delivery foreign valves
6000 PSI ~ Sizes from ½" to 2"



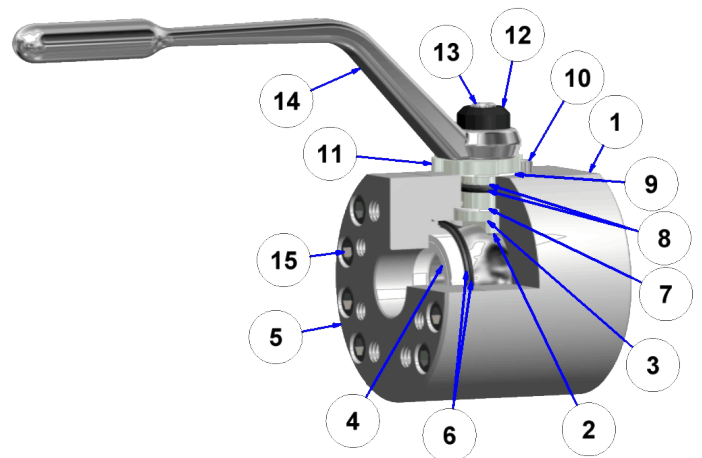
DMIC **BVSS** economically covers all the bases in SAE 4-Bolt C.61 & 62 Flange connections. This is the valve to stock if you can only keep one model, and it can bridge dissimilar flange standards.

- **Spindle-Glide Design** features low torque, high duty cycle durability
- **Delrin™ Ball Seals** and Buna-N standard elastomer seals, with all DMIC sealing options available for wide fluid and temperature compatibility range
- **Unrestricted bore ball** reduces pressure drop
- **Available in Stainless Steel - Fast Delivery**

Service Parts BOM

BVSS	SERVICE PARTS BOM	
Index	Qty	Description
1	1	Valve Body
2	1	Ball
3	1	Spindle
4	2	Ball Seal
5	1	End Connection
6	1	End Connection O-Rings
7	1	Internal Thrust Washer
8	1	Spindle O-Rings
9	1	External Glide Washer
10	1	Stop Pin
11	1	Stop Washer
12	1	Color Code Cap
13	1	Top Cap Screw
14	1	Handle
15	*	End Connection Bolts

* - Quantity depends on size and combination of body



BVSS DUAL PATTERN SAE 4-BOLT BV, C.61 & 62

See page 14 for
accessory codes

Valve Series	
Code	Port Size
BVSS	SAE Dual C.61/62

BVSS

20

FK

1

1

1

1

A

Z

Z

A

Size	
Code	Port Size
05	½"
07	¾"
10	1"
12	1¼"
15	1½"
20	2"

Call Factory for
larger sizes 18"+

Connection Type	
Code	Description
FK	Dual SAE C.61/62 (Standard on BVSS)

Body Material	
Code	Description
1	Carbon Steel
2	Stainless Steel

Ball & Spindle Mat'l	
Code	Description
1	Carbon Steel
2	Stainless Steel
6	416 Stainless Spindle 316 Stainless Ball

Ball Seal Material	
Code	Description
1	Delrin™
2	PTFE Teflon™ (1500 PSI MAX)
4	High Temp PEEK
6	Delrin™ AF (low Friction)
7	Glass Reinforced Teflon™

O-Ring Seals	
Code	Description
1	Buna-N
2	EPR
3	Viton™
4	Teflon™
5	Chemraz™

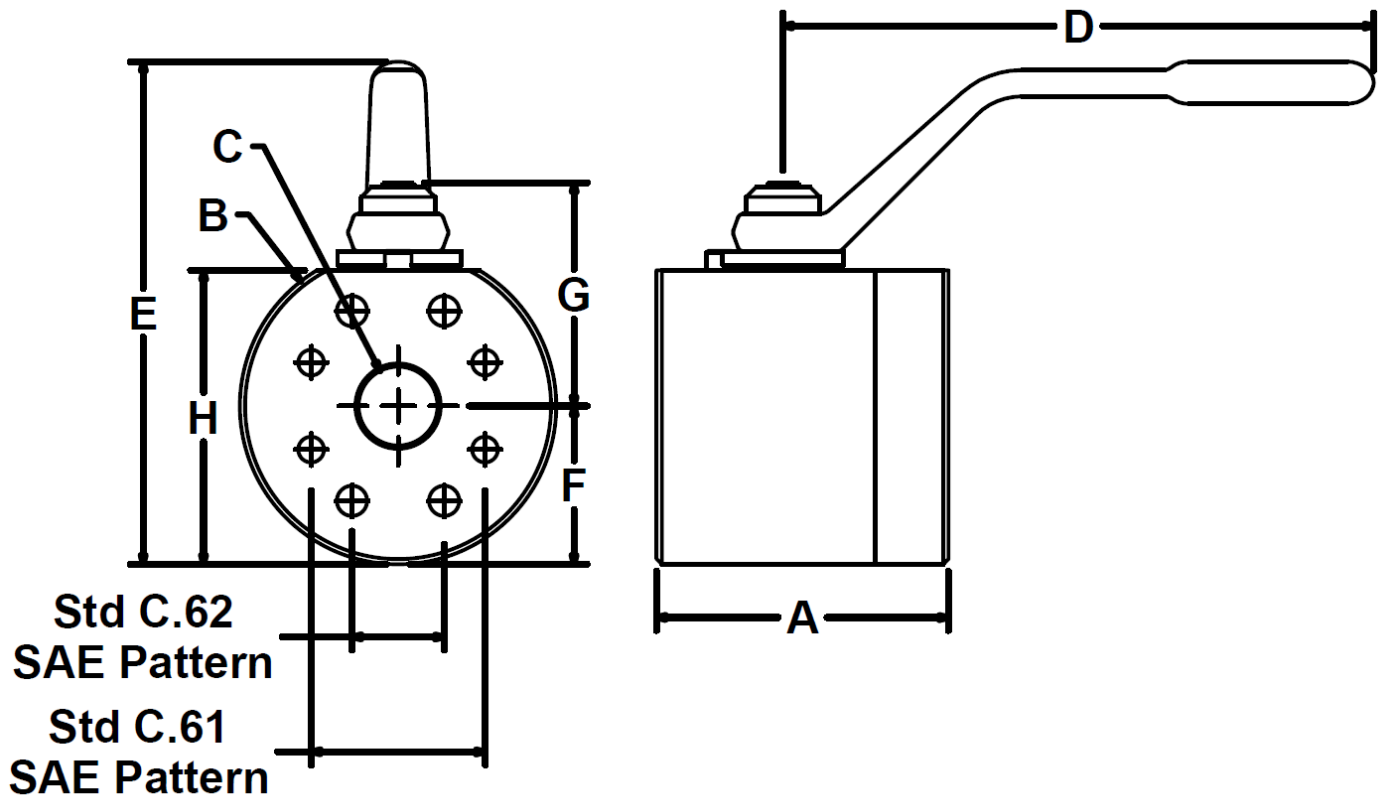
Note: Changes from Standard Materials may result in changes to temperature and/or pressure rating.

Due to our policy of continual product improvement, the specifications in this catalog may change without notice. When designing by spec, please request a certified print.



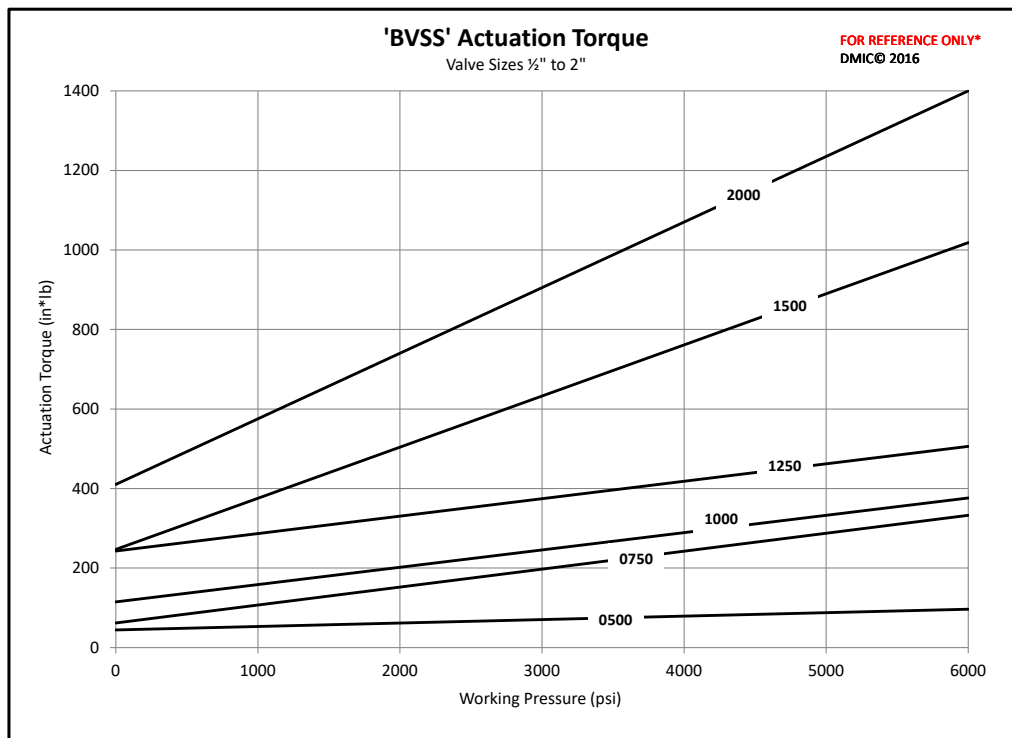
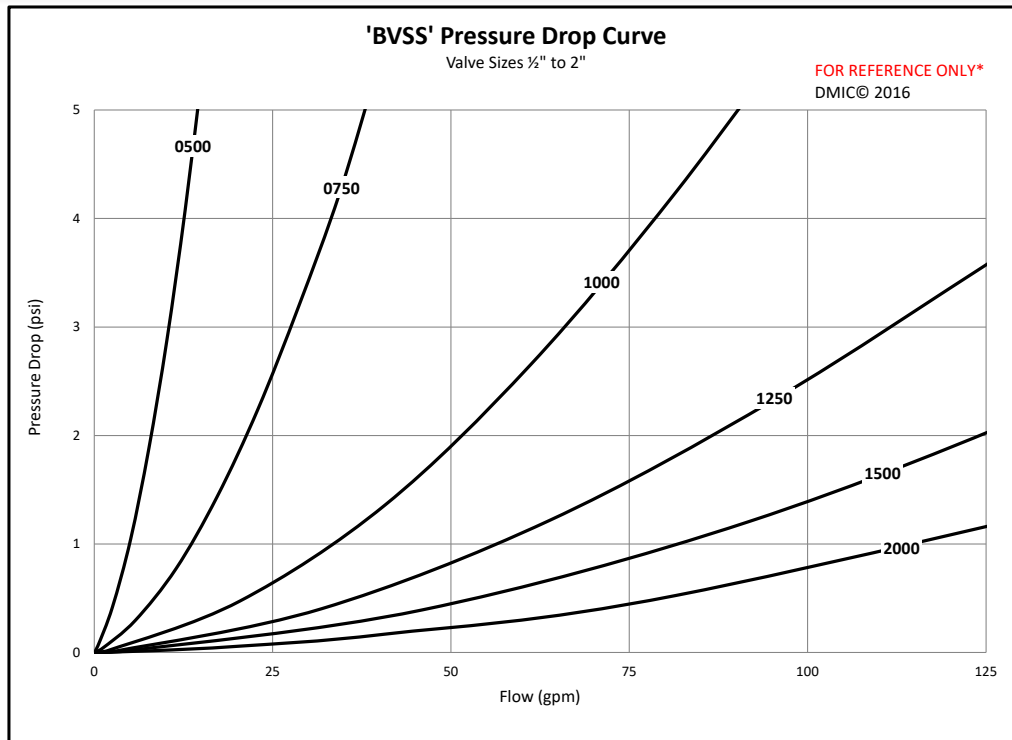
BVSS DUAL PATTERN SAE 4-BOLT BV, C.61 & 62

BVSS	Dimensions (inches)										
	Port Size	PSI Rating C.61	PSI Rating C.62	A Valve Length	B Valve Width	Øc Valve Bore	D Handle Length	E Overall Height	F Bot to PortCtr	G PortCtr to Top	H Valve Height
BVSS-05FK****	½"	5000	6000	2.30	2.75	0.50	4.50	4.15	1.38	1.94	2.53
BVSS-07FK****	¾"			3.15	3.50	0.75	7.00	5.73	1.75	2.55	3.26
BVSS-10FK****	1"			3.46	3.75	0.94	7.00	5.96	1.88	2.65	3.48
BVSS-12FK****	1¼"	4000		3.94	4.44	1.25	9.86	7.38	2.22	3.29	4.18
BVSS-15FK****	1½"			4.48	5.00	1.50	9.86	7.96	2.50	3.59	4.77
BVSS-20FK****	2"	3000		4.57	6.00	1.88	9.86	8.79	3.00	3.92	5.60



BVSS DUAL PATTERN SAE 4-BOLT BV, C.61 & 62

Flow Characteristic and Actuation Torque Curves



Due to our policy of continual product improvement, the specifications in this catalog may change without notice. When designing by spec, please request a certified print.

