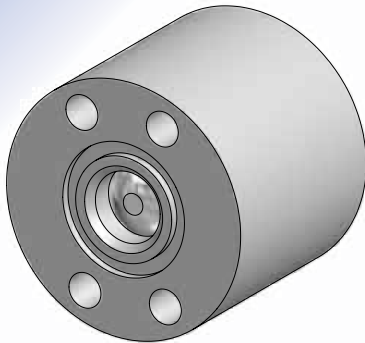


CVDM DIRECT MOUNT CHECK VALVE

SAE C.61/62, ANSI/DIN/DM-Flange: 400/3000/6000 PSI

Sandwiches inline with through bolt holes; One OR Groove, one Flat Face pad;
Standard sizes from ½" to 6" with larger custom valves available

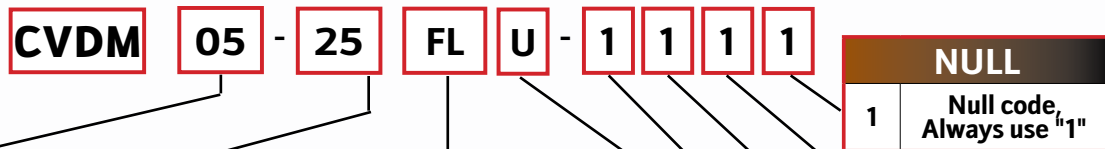


DMIC **CVDM** is the ideal companion to **BVSS** and **BVFF** Ball Valves. **CVDM** allows a large bore, low ΔP check valve to be integrated into your circuit, eliminating an external threaded connection.

In addition to on-component mounting, the **CVDM** is well suited to mounting on a manifold. The exclusive DMIC ordering system allows Buyers to specify any SAE 4-Bolt, ANSI, DIN, or DM connection, and receive compatible sealing, material spec, and working pressure.

- Developed from nearly two decades experience with our **CVH** threaded check valve for the reliability that has become synonymous with the DMIC name
- Available in aluminum, carbon and stainless steel construction
- Comes standard with 5 & 65 PSI; 0/15/30/75/115/135 PSI quick delivery options. Other pressures available upon request.
- Poppet orifice is available by special order

Ordering Codes Summary



Cracking Pressure	
Stock Options	
05	5 PSI (0.35 Bar)
65	65 PSI (4.5 Bar)
Rapid Delivery Options	
15	15 PSI (1.03 Bar)
30	30 PSI (2.1 Bar)
75	75 PSI (5.2 Bar)
135	135 PSI (9.3 Bar)

Size	
Code	Port Size
05	½"
07	¾"
10	1"
12	1¼"
15	1½"
20	2"
25	2½"
30	3"
40	4"
50	5"
60	6"

Connection Type	
Code	Description
FL	SAE Code 61
FK	SAE Code 62
DM	DMIC Flange 3000 PSI
DH	DMIC Flange 6000 PSI
AA	ANSI Class 150 (285 PSI)
AB	ANSI Class 300 (740 PSI)
AC	ANSI Class 600 (1480 PSI)
AD	ANSI Class 900 (2220 PSI)
AE	ANSI Class 1500 (3705 PSI)
AF	ANSI Class 2500 (6170 PSI)
DA	DIN 3202-F1
DB	DIN 3203-F4

O-Ring Seals	
Code	Description
1	Buna-N
2	EPR
3	Viton
4	Teflon
5	Chemraz

Poppet & Spring Material	
Code	Description
1	Carbon Steel
2	Stainless Steel

Body Material	
Code	Description
1	Carbon Steel
2	Stainless Steel
4	Aluminum

O-Ring Location	
Code	Description
U	At Inlet
C	At Outlet

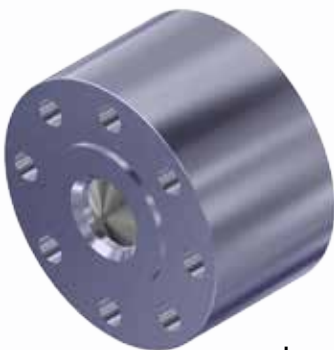
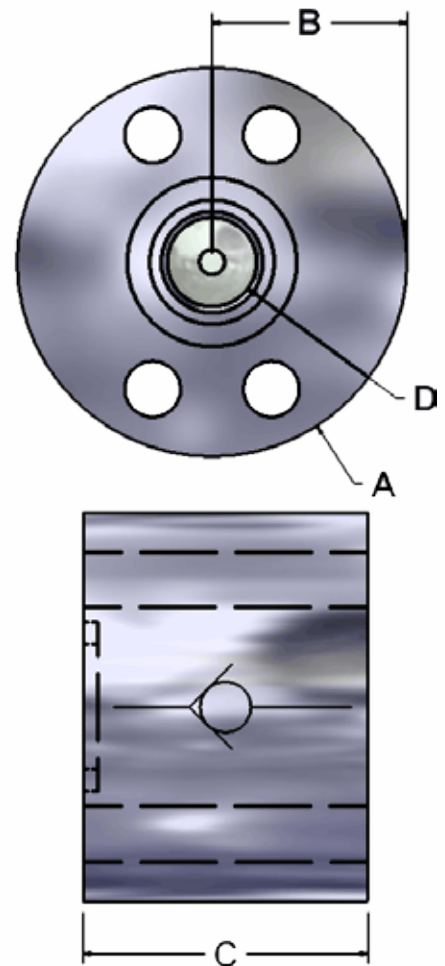


Image to left is a 3" ANSI 600# CVDM.



CVDM	Port Size	PSI Rating	Dimensions (inches)						
			ØA	B	C	ØD			
			Overall Diam	Ctr line Dim	Overall Length	Thru Bore			
Replace * in part number with the desired cracking pressure from 05/15/30/65/75/105/135 PSI. The W position refers to position of O-ring face. U=OR-Face @ Inlet, C=OR Face @ Outlet									
CVDM-41: ANSI 150, ALUMINUM BODY, 400 PSI									
CVDM*-05AA-4111	½"	285 PSI	Please contact Factory for latest specifications. If SAE code 61 pattern is desired, replace AA with FL.						
CVDM*-07AA-4111	¾"								
CVDM*-10AA-4111	1"								
CVDM*-12AA-4111	1¼"								
CVDM*-15AA-4111	1½"								
CVDM*-20AA-4111	2"								
CVDM*-25AA-4111	2½"								
CVDM*-30AA-4111	3"								
CVDM*-40AA-4111	4"	285 PSI	Please call Factory for latest specifications on large ANSI and DIN flange check valves.						
CVDM*-50AA-4111	5"								
CVDM*-60AA-4111	6"								
CVDM FL/DM: SAE C.61 & DM-FLANGE, STEEL BODY, TO 3000 PSI									
NOTE: SAE Code 61 large sizes above 2" are derated to SAE C.61 working pressure by spec.									
CVDM*-05FLU-1111	½"	3000 PSI	2.38	1.19	1.86	0.50			
CVDM*-07FLU-1111	¾"		2.88	1.44	2.10	0.66			
CVDM*-10FLU-1111	1"		3.00	1.50	2.56	0.83			
CVDM*-12FLU-1111	1¼"		3.50	1.75	3.05	1.08			
CVDM*-15FLU-1111	1½"		4.00	2.00	3.54	1.30			
CVDM*-20FLU-1111	2"		4.50	2.25	4.47	1.81			
CVDM*-25FLU-1111	2½"	2500 PSI	Please call Factory for latest specifications.						
CVDM*-25DM-1111		3000 PSI							
CVDM*-30FLU-1111	3"	2000 PSI							
CVDM*-30DM-1111		3000 PSI							
CVDM*-40FLU-1111	4"	500 PSI							
CVDM*-40DM-1111		3000 PSI							
CVDM*-50DM-1111	5"	3000 PSI							
CVDM*-60DM-1111	6"	3000 PSI							
CVDM FK/DH: SAE C.62 & DM-FLANGE, STEEL BODY, 6000 PSI									
CVDM*-05FKU-1111	½"	6000 PSI					2.50	1.25	1.86
CVDM*-07FKU-1111	¾"		3.00	1.50	2.10	0.66			
CVDM*-10FKU-1111	1"		3.50	1.75	2.54	0.83			
CVDM*-12FKU-1111	1¼"		4.00	2.00	3.05	1.08			
CVDM*-15FKU-1111	1½"		4.75	2.38	3.54	1.30			
CVDM*-20FKU-1111	2"		5.50	2.75	4.47	1.81			
CVDM*-25DH-1111	2½"		Please contact Factory for latest specifications.						
CVDM*-30DH-1111	3"								
CVDM*-40DH-1111	4"								
CVDM*-50DH-1111	5"								
CVDM*-60DH-1111	6"								



Available Flanges and Bolt Kits	
Flange	Description
FDM-25**-11	DMIC Custom Medium Pressure Pattern for Weld Flanges (3000 PSI rating)
FDM-30**-11	
FDM-40**-11	
FDM-50**-11	
FDM-60**-11	

**NOTE: Please replace ** in flange part number with W4=Sch.40, W8=Sch. 80, WF=Sch.160, WG=XXStrong for socket weld flanges. Butt Weld flanges are as follows: WB4 = Sch. 40, WB8 = Sch. 80, WBF = Sch 160, WBG = XXStong.

Available Flanges and Bolt Kits	
Flange	Description
FDH-25**-11	DMIC Custom High Pressure Pattern for Weld Flanges (6000 PSI rating)
FDH-30**-11	
FDH-40**-11	
FDH-50**-11	
FDH-60**-11	

Due to our policy of continual product improvement, the specifications in this catalog may change without notice. When designing by spec, please request a certified print.

