

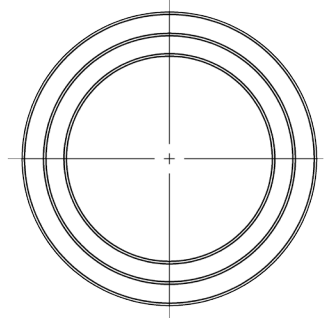
CSNNP Downline Adapter W/O Pilot

Facilitates return line to reservoir
Sizes $\frac{3}{8}$ " to 2"

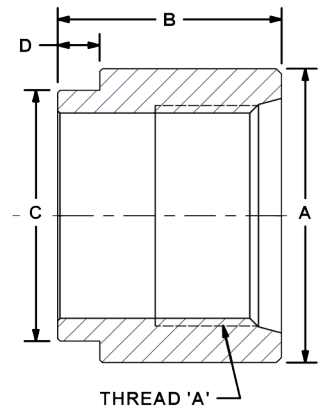


The CSN Half Coupler is the downline coupling with a difference. DMIC's design offers both Non-Pilot & Piloted versions to meet your design requirements.

- Non-Pilot for Inline or Custom tank Apps.
- EZ-Weld material.
- Made in USA for rapid delivery.
- Suction to 3000PSI.



CSNNP	Swivel to Swivel		
	Port Size	Dimensions IN	
		A	B
B N S W4	$\frac{3}{8}$ "	0.94	1.41
	$\frac{1}{2}$ "	1.13	1.72
	$\frac{3}{4}$ "	1.50	1.98
	1"	1.75	2.17
	1 $\frac{1}{4}$ "	2.13	2.25
	1 $\frac{1}{2}$ "	2.38	2.26
	2"	3.00	2.41



Ordering Codes

CSNNP		**	-	N	-	**	-	S	-	1	1	<table><tr><th colspan="2">Null</th></tr><tr><th>Code</th><th>Description</th></tr><tr><td colspan="2">This code is always "1"</td></tr></table>		Null		Code	Description	This code is always "1"																																																											
Null																																																																													
Code	Description																																																																												
This code is always "1"																																																																													
<table><tr><th colspan="2">First Size Code</th></tr><tr><th>Code</th><th>Port Size</th></tr><tr><td>03</td><td>3/8"</td></tr><tr><td>05</td><td>1/2"</td></tr><tr><td>07</td><td>3/4"</td></tr><tr><td>10</td><td>1"</td></tr><tr><td>12</td><td>1 1/4"</td></tr><tr><td>15</td><td>1 1/2"</td></tr><tr><td>20</td><td>2"</td></tr></table>		First Size Code		Code	Port Size	03	3/8"	05	1/2"	07	3/4"	10	1"	12	1 1/4"	15	1 1/2"	20	2"	<table><tr><th colspan="2">Thread - A</th></tr><tr><th>Code</th><th>Description</th></tr><tr><td>B</td><td>BSPP-F</td></tr><tr><td>N</td><td>NPT-F (standard)</td></tr><tr><td>S</td><td>SAE-F ORB</td></tr><tr><td>W4</td><td>Sch. 40 Socket Weld</td></tr></table>		Thread - A		Code	Description	B	BSPP-F	N	NPT-F (standard)	S	SAE-F ORB	W4	Sch. 40 Socket Weld	<table><tr><th colspan="2">First Size Code</th></tr><tr><th>Code</th><th>Port Size</th></tr><tr><td>03</td><td>3/8"</td></tr><tr><td>05</td><td>1/2"</td></tr><tr><td>07</td><td>3/4"</td></tr><tr><td>10</td><td>1"</td></tr><tr><td>12</td><td>1 1/4"</td></tr><tr><td>15</td><td>1 1/2"</td></tr><tr><td>20</td><td>2"</td></tr></table>		First Size Code		Code	Port Size	03	3/8"	05	1/2"	07	3/4"	10	1"	12	1 1/4"	15	1 1/2"	20	2"	<table><tr><th colspan="2">Thread - B</th></tr><tr><th>Code</th><th>Description</th></tr><tr><td>S</td><td>SAE-F (standard)</td></tr><tr><td>W4</td><td>Sch. 40 Socket Weld</td></tr><tr><td>N</td><td>NPT-F</td></tr><tr><td>B</td><td>BSPP-F</td></tr></table>		Thread - B		Code	Description	S	SAE-F (standard)	W4	Sch. 40 Socket Weld	N	NPT-F	B	BSPP-F	<table><tr><th colspan="2">Adapter Material</th></tr><tr><th>Code</th><th>Description</th></tr><tr><td>1</td><td>Low Carbon Steel</td></tr><tr><td>2</td><td>Stainless Steel</td></tr></table>		Adapter Material		Code	Description	1	Low Carbon Steel	2	Stainless Steel
First Size Code																																																																													
Code	Port Size																																																																												
03	3/8"																																																																												
05	1/2"																																																																												
07	3/4"																																																																												
10	1"																																																																												
12	1 1/4"																																																																												
15	1 1/2"																																																																												
20	2"																																																																												
Thread - A																																																																													
Code	Description																																																																												
B	BSPP-F																																																																												
N	NPT-F (standard)																																																																												
S	SAE-F ORB																																																																												
W4	Sch. 40 Socket Weld																																																																												
First Size Code																																																																													
Code	Port Size																																																																												
03	3/8"																																																																												
05	1/2"																																																																												
07	3/4"																																																																												
10	1"																																																																												
12	1 1/4"																																																																												
15	1 1/2"																																																																												
20	2"																																																																												
Thread - B																																																																													
Code	Description																																																																												
S	SAE-F (standard)																																																																												
W4	Sch. 40 Socket Weld																																																																												
N	NPT-F																																																																												
B	BSPP-F																																																																												
Adapter Material																																																																													
Code	Description																																																																												
1	Low Carbon Steel																																																																												
2	Stainless Steel																																																																												
												<u>Alternate Thread "A" Selection</u>																																																																	