

CVH Check Valves

Guided poppet design for 10,000 PSI service,
1/4" to 2" NPT/SAE/BSPP/BSPT/6149

Flow restricting check valves permit flow in one direction once the line pressure exceeds the cracking pressure of the poppet spring. Reverse flow is blocked, however an optional poppet orifice can permit some backflow.



- 10,000 psi pressure rating.
- Carbon steel and stainless steel versions.
- Port sizes from 1/4" to 2".
- Choice of threaded connection types.
- Choice of "cracking" pressures.
- One-piece body eliminates leak points.
- Guided poppet ensures positive sealing and longevity.
- Optional poppet orifice supports intentional backflow.
- Metal to metal seat is suitable for hydraulic applications.
- Optional soft seat versions available for gaseous and low viscosity liquid applications (Model CVHG).

Ordering Codes

CVH 65 - 2000 S 1 1 031

Standard	
05	5 PSI (0.35 Bar)
65	65 PSI (4.5 Bar)
Optional	
15	15 PSI (1.03 Bar)
30	30 PSI (2.1 Bar)
75	75 PSI (5.2 Bar)
135	135 PSI (9.3 Bar)

Size Codes	
Code	Port Size
0250	1/4"
0375	3/8"
0500	1/2"
0625	5/8"
0750	3/4"
1000	1"
1250	1 1/4"
1500	1 1/2"
2000	2"

Port Thread	
N	NPT
S	SAE ORB
B	BSPP

Body	
1	Carbon Steel
2	Stainless Steel

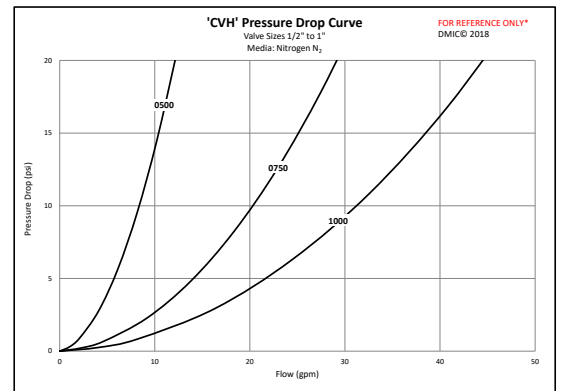
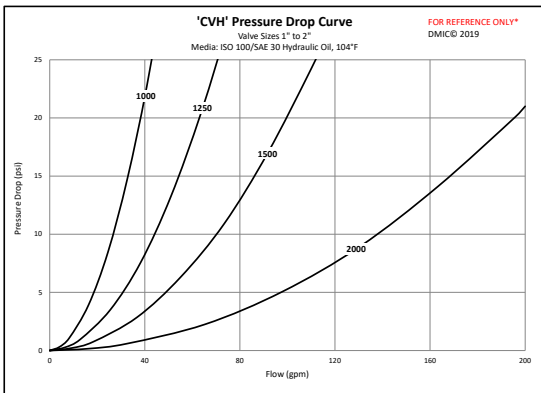
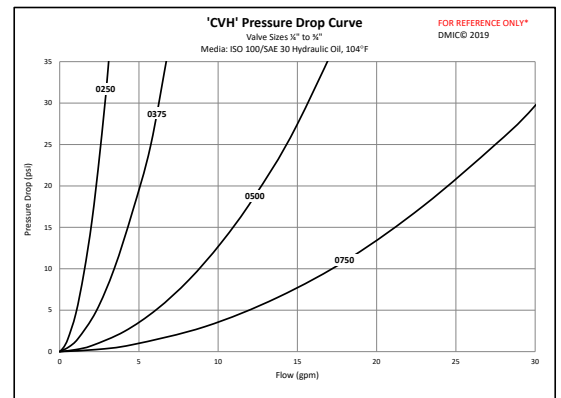
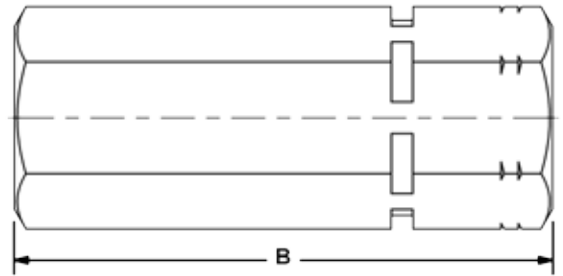
Internal	
1	Carbon Steel
2	Stainless Steel

Orifice (optional)	
031	1/32"
062	1/16"
093	3/32"
125	1/8"
156	5/32"
188	3/16"

CVH	Physical Parameters
BODY	Carbon Steel (Opt. all Stainless Steel)
POPPET	Hardened Carbon Steel (Opt. all S/S)
SPRING	Helical, Spring Steel
POPPET LANDING ZONE	Carbon Steel, Oversize (Opt. All S/S)
RETAINER	Steel
SEALING	Metallic Hard Seat
TEMP RANGE	-20° F/400° F (-29° C/204° C)

CVH Check Valves

CVH	Nominal Size	Performance Data		Dimensions (inches)		
		Flow GPM	Working Pressure	A Hex	B Length	Lbs.
CVH**-0250N	1/4"	5 GPM	10,000 PSI	0.75	2.14	0.24
CVH**-0250S						
CVH**-0250B						
CVH**-0375N	3/8"	8 GPM	10,000 PSI	0.88	2.50	0.48
CVH**-0375S						
CVH**-0375B						
CVH**-0500N	1/2"	15 GPM	10,000 PSI	1.13	3.13	0.64
CVH**-0500S						
CVH**-0500B						
CVH**-0750N	3/4"	25 GPM	10,000 PSI	1.50	3.81	1.03
CVH**-0750S						
CVH**-0750B						
CVH**-1000N	1"	40 GPM	10,000 PSI	1.75	4.31	2.18
CVH**-1000S						
CVH**-1000B						
CVH**-1000IU						
CVH**-1250N	1 1/4"	70 GPM	10,000 PSI	2.25	5.04	4.19
CVH**-1250S						
CVH**-1250B						
CVH**-1250IU						
CVH**-1500N	1 1/2"	100 GPM	10,000 PSI	2.50	5.50	5.16
CVH**-1500S						
CVH**-1500B						
CVH**-1500IU						
CVH**-2000N	2"	150 GPM	10,000 PSI	3.25 (3.50)** Round Body	6.75	11.00
CVH**-2000S						
CVH**-2000B						
CVH**-2000IU						



This valve series is factory sealed and disassembly will destroy the valve and void the warranty. Due to our policy of continual product improvement, the specifications in this catalog may change without notice. When designing by spec, please request a certified print.