

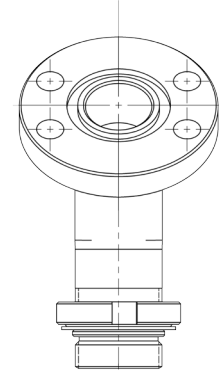
# ESF SAE 4B Standard to Thread 45°

Convert low pressure SAE/BSP thrd to SAE 4-Bolt standard pad

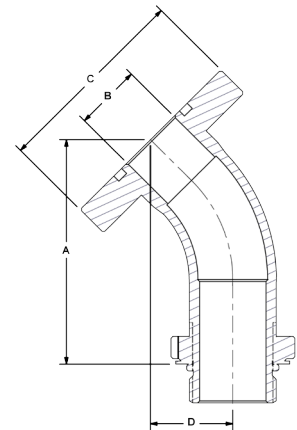


The ESF converts standard/extended threaded ports to SAE 4-Bolt Standard connection. Properly radiused 45 degree bend, aiding laminar flow through the fluid direction change. Available in Stainless Steel.

- Fast and economical conversion to SAE 4-Bolt standard, UNC (standard) or Metric Bolts.
- Reliable mechanical base for your SAE C.61 Split Flange terminated pipe or hose.
- Swivel permits proper flange alignment.
- Made in U.S.A., fast delivery of step-size and S/S models.
- Suction to 400 PSI.



<b>ESF</b>		<b>C.61 4B Standard to SAE/ BSP Thread 45°</b>			
<b>Port Codes</b>	<b>Port Size</b>	<b>Dimensions IN</b>			
		<b>A</b>	<b>B</b>	<b>C</b>	<b>D</b>
<b>FL AA S B</b>	¾"	3.19	0.75	2.75	1.15
	1"	3.40	1.00	3.00	1.25
	1¼"	3.73	1.25	3.38	1.33
	1½"	3.93	1.50	3.75	1.41
	2"	4.37	2.00	4.25	1.60
	2½"	5.15	2.50	4.75	1.95
	3"	5.77	3.00	5.75	2.12
	4"	6.63	4.00	7.00	2.48



## Ordering Codes

ESF - \*\* FL - \*\* S - 1 1

<b>O-Ring Elastomer</b>	
Code	Description
1	Buna-N (standard)
2	Ethylene Propylene "EPR"
3	Viton

<b>First Size Code</b>	
Code	Port Size
07	¾"
10	1"
12	1¼"
15	1½"
20	2"
25	2½"
30	3"
40	4"
50	5" - Call
60	6" - Call

<b>Split Flange Side</b>	
Code	Description
FL	C.61 4B Std. Universal
AA	ANSI 150 #

Choose Adapter Size  
Replace \*\* with the desired adapter size.  
Two different size codes selects step size option.

<b>Second Size Code</b>	
Code	Port Size
07	¾"
10	1"
12	1¼"
15	1½"
20	2"
25	2½"
30	3"
40	4"
50	5" - Call
60	6" - Call

<b>Thread Side</b>	
Code	Description
S	SAE ORB (Standard)
B	BSPP

### Universal Bolt Holes

The SAE 4-Bolt standard pad is drilled nominally oversize to permit the use of UNC or Metric bolts.

### Alternate Thread Standard

Replace the "S" SAE ORB standard thread connection with a choice from the "Thread Side" table. Please call to confirm price and availability.

<b>Adapter Material</b>	
Code	Description
1	Low Carbon Steel
2	Stainless Steel

