

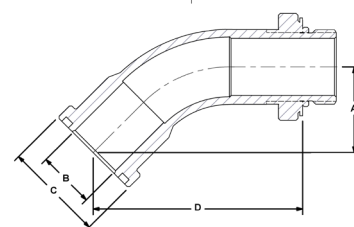
# ESS Split Head to Thread 45°

Convert SAE/BSP ports to Split Flange connection ~ 3/4" to 6"



The 45° ESS compliments the design flexibility introduced by SSE (page 20). Rigid mechanical mounting of suspended valves is made simple and repeatable.

- Standard and expanded SAE/BSP connections from 3/4" to 6" size
- Engineered in tandem with DMIC BVAL valves, there is never a question of compatibility, tolerances, or fit.
- Step size versions and stainless steel available.
- Suction to 400 PSI.
- Made in U.S.A.
- Carbon Steel part number, see catalog F04 for other options.



ESS		C.61 Split Flange Head to Thread, 45° Elbow				
Port Codes	Port Size	Dimensions IN				Split Flange Kit (Carbon Steel)
		A	B	C	D	
SM S B	3/4"	1.41	0.75	1.50	3.45	FSL-0750SK
	1"	1.51	1.00	1.75	3.66	FSL-1000SK
	1 1/4"	1.59	1.25	2.00	4.00	FSL-1250SK
	1 1/2"	1.68	1.50	2.38	4.20	FSL-1500SK
	2"	1.86	2.00	2.81	4.64	FSL-2000SK
	2 1/2"	2.48	2.50	3.31	5.68	FSL-2500SK
	3"	2.74	3.00	4.00	6.39	FSL-3000SK
	4"	3.00	4.00	5.00	7.16	FSL-4000SK

## Ordering Codes

ESS

\*\*

SM

\*\*

S

1

1

First Size Code

Code	Port Size
07	¾"
10	1"
12	1¼"
15	1½"
20	2"
25	2½"
30	3"
40	4"
50	5" - Call

Split Flange Side

Code	Description
SM	C.61 Split Flange Head

Second Size Code

Code	Port Size
07	¾"
10	1"
12	1¼"
15	1½"
20	2"
25	2½"
30	3"
40	4"
50	5" - Call

Thread Side

Code	Description
S	Swivel SAE-M ORB
B	Swivel BSPP-M

Adapter Material

Code	Description
1	Low Carbon Steel
2	Stainless Steel

Choose Adapter Size

Replace \*\* with the desired adapter size.

Two different size codes selects step size option.

Alternate Thread Standard

Replace the "S" SAE ORB standard thread connection with a choice from the "Thread Side" table. Please call to confirm price and availability.

O-Ring Elastomer

Code	Description
1	Buna-N (standard)
2	Ethylene Propylene "EPR"
3	Viton

