

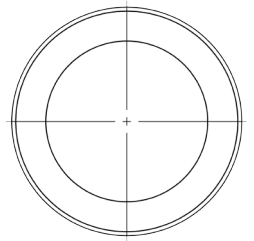
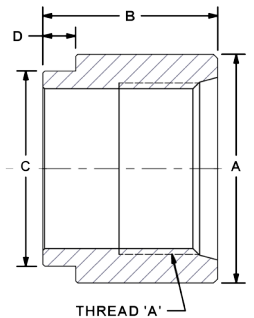
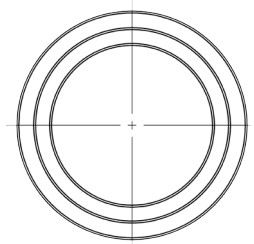
CSN Half Coupler

Facilitates return line to reservoir
Sizes $\frac{3}{8}$ " to 2"



The CSN Half Coupler is the downline coupling with a difference. DMIC's design offers both Non-Pilot & Piloted versions to meet your design requirements.

- Non-Pilot for Inline or Custom tank applications.
- Pilot available for square placement on reservoir.
- EZ-Weld material.
- Made in USA for rapid delivery.
- Suction to 3000PSI.



| CSN Half Coupler | With Pilot Dimensions | | | | |
|---------------------|-----------------------|---------------|------|------|------|
| | Port Size | Dimensions IN | | | |
| | | A | B | C | D |
| B | $\frac{3}{8}$ " | 0.94 | 0.88 | 0.81 | 0.18 |
| | $\frac{1}{2}$ " | 1.13 | 1.11 | 1.00 | 0.25 |
| N | $\frac{3}{4}$ " | 1.50 | 1.24 | 1.25 | 0.25 |
| | 1" | 1.75 | 1.33 | 1.50 | 0.25 |
| S | $1\frac{1}{4}$ " | 2.13 | 1.38 | 1.87 | 0.25 |
| | $1\frac{1}{2}$ " | 2.38 | 1.38 | 2.12 | 0.25 |
| W4 | 2" | 3.00 | 1.45 | 2.62 | 0.25 |

| CSN Half Coupler | No Pilot Dimensions | | |
|---------------------|---------------------|---------------|------|
| | Port Size | Dimensions IN | |
| | | A | B |
| B | $\frac{3}{8}$ " | 0.94 | 0.70 |
| | $\frac{1}{2}$ " | 1.13 | 0.86 |
| N | $\frac{3}{4}$ " | 1.50 | 1.00 |
| | 1" | 1.75 | 1.08 |
| S | $1\frac{1}{4}$ " | 2.13 | 1.13 |
| | $1\frac{1}{2}$ " | 2.38 | 1.00 |
| W4 | 2" | 3.00 | 1.13 |

Ordering Codes

| | | | | | | |
|------------------|------------------|--------|-------------|------------------|-------------------------|-------------|
| CSN - ** S - 1 1 | | | | | Null | |
| | | | | | Code | Description |
| | | | | | This code is always "1" | |
| Size Code | | Thread | | Adapter Material | | |
| Code | Port Size | Code | Description | Code | Description | |
| 03 | $\frac{3}{8}$ " | B | BSPP-M | 1 | Low Carbon Steel | |
| 05 | $\frac{1}{2}$ " | N | NPT-F | 2 | Stainless Steel | |
| 07 | $\frac{3}{4}$ " | S | SAE-F ORB | | | |
| 10 | 1" | W4 | SCH.40 SW. | | | |
| 12 | $1\frac{1}{4}$ " | | | | | |
| 15 | $1\frac{1}{2}$ " | | | | | |
| 20 | 2" | | | | | |

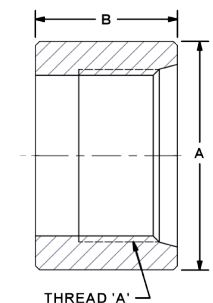
Choose Adapter Size
Replace ** with the desired adapter size.

Alternate External Thread Standard

Replace the "S" SAE ORB standard thread connection with a choice from the "Thread Side" table. Please call to confirm price and availability.

Alternate Weld Connection Standard

DMIC does not offer any alternate weld connections for the FFW model adapter. For a Socket Weld variation, see SSW on page 7.



Due to our policy of continual product improvement, the specifications in this catalog may change without notice. When designing by spec, please request a certified print.



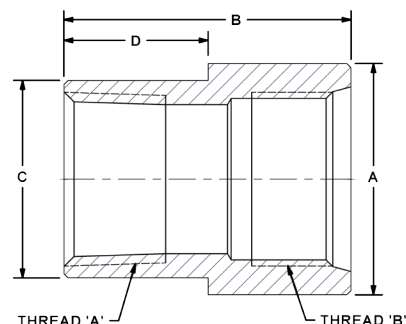
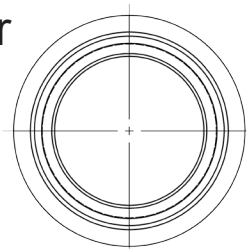
CSN Downline Adapter W/ Pilot

Facilitates return line to reservoir
Sizes $\frac{3}{8}$ " to 2"



The CSN Half Coupler is the downline coupling with a difference. DMIC's design offers both Non-Pilot & Piloted versions to meet your design requirements.

- Pilot available for square placement on reservoir.
- EZ-Weld material.
- Made in USA for rapid delivery.
- Suction to 3000PSI.



| CSN | B/N/W4 For Thread "A" Dimensions | | | | |
|--------------|----------------------------------|---------------|------|------|------|
| | Port Size | Dimensions IN | | | |
| | | A | B | C | D |
| B N W4 | $\frac{3}{8}$ " | 0.94 | 1.41 | 0.81 | 0.71 |
| | $\frac{1}{2}$ " | 1.13 | 1.72 | 1.00 | 0.86 |
| | $\frac{3}{4}$ " | 1.50 | 1.98 | 1.25 | 0.99 |
| | 1" | 1.75 | 2.17 | 1.50 | 1.09 |
| | $1\frac{1}{4}$ " | 2.13 | 2.25 | 1.87 | 1.13 |
| | $1\frac{1}{2}$ " | 2.38 | 2.26 | 2.12 | 1.13 |
| | 2" | 3.00 | 2.41 | 2.62 | 1.21 |

| CSN | S Only For Thread "B" Dimensions | | | | |
|-----|----------------------------------|---------------|------|------|------|
| | Port Size | Dimensions IN | | | |
| | | A | B | C | D |
| S | $\frac{3}{8}$ " | 1.00 | 1.41 | 0.81 | 0.71 |
| | $\frac{1}{2}$ " | 1.13 | 1.72 | 1.00 | 0.86 |
| | $\frac{3}{4}$ " | 1.50 | 1.98 | 1.25 | 0.99 |
| | 1" | 1.75 | 2.17 | 1.50 | 1.09 |
| | $1\frac{1}{4}$ " | 2.13 | 2.25 | 1.87 | 1.13 |
| | $1\frac{1}{2}$ " | 2.38 | 2.26 | 2.12 | 1.13 |
| | 2" | 3.00 | 2.41 | 2.62 | 1.21 |

Ordering Codes

CSN - ** N - ** S - 1 1

| Null | |
|------|-------------------------|
| Code | Description |
| | This code is always "1" |

| First Size Code | |
|-----------------|------------------|
| Code | Port Size |
| 03 | $\frac{3}{8}$ " |
| 05 | $\frac{1}{2}$ " |
| 07 | $\frac{3}{4}$ " |
| 10 | 1" |
| 12 | $1\frac{1}{4}$ " |
| 15 | $1\frac{1}{2}$ " |
| 20 | 2" |

| Thread - A | |
|------------|--------------------|
| Code | Description |
| B | BSPP-F |
| N | NPT-F |
| S | SAE-F ORB |
| W4 | SCH.40 Socket Weld |

Choose Adapter Size
Replace ** with the desired adapter size.

| Second Size Code | |
|------------------|------------------|
| Code | Port Size |
| 03 | $\frac{3}{8}$ " |
| 05 | $\frac{1}{2}$ " |
| 07 | $\frac{3}{4}$ " |
| 10 | 1" |
| 12 | $1\frac{1}{4}$ " |
| 15 | $1\frac{1}{2}$ " |
| 20 | 2" |

| Thread - B | |
|------------|--------------------|
| Code | Description |
| B | BSPP-F |
| N | NPT-F |
| S | SAE-F (standard) |
| W4 | SCH.40 Socket Weld |

Alternate Thread "A" Selection

Replace the "N" NPT-F standard internal connection with a choice from the "Internal Thread-A" table. Please call to confirm price and availability.

Alternate Thread "B" Selection

Replace the "S" SAE-F standard thread connection with a choice from the "External Thread-B" table. Please call to confirm price and availability.

| Adapter Material | |
|------------------|------------------|
| Code | Description |
| 1 | Low Carbon Steel |
| 2 | Stainless Steel |



www.dmic.com
DMIC SSW Catalog
Copyright ©2020 Delaware Mfg.

SSW-ADD-2101
Page 3

Call Toll Free 1-800-248-3642
In Canada 1-800-320-3642



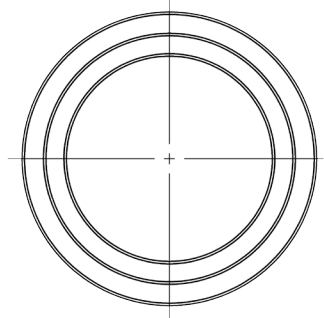
CSNNP Downline Adapter W/O Pilot

Facilitates return line to reservoir
Sizes $\frac{3}{8}$ " to 2"

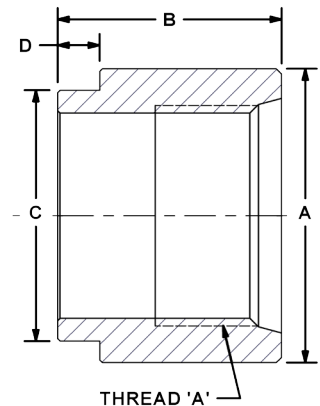


The CSN Half Coupler is the downline coupling with a difference. DMIC's design offers both Non-Pilot & Piloted versions to meet your design requirements.

- Non-Pilot for Inline or Custom tank Apps.
- EZ-Weld material.
- Made in USA for rapid delivery.
- Suction to 3000PSI.



| CSNNP | Swivel to Swivel | | |
|-------------------|-------------------|---------------|------|
| | Port Size | Dimensions IN | |
| | | A | B |
| B N S W4 | $\frac{3}{8}$ " | 0.94 | 1.41 |
| | $\frac{1}{2}$ " | 1.13 | 1.72 |
| | $\frac{3}{4}$ " | 1.50 | 1.98 |
| | 1" | 1.75 | 2.17 |
| | 1 $\frac{1}{4}$ " | 2.13 | 2.25 |
| | 1 $\frac{1}{2}$ " | 2.38 | 2.26 |
| | 2" | 3.00 | 2.41 |



Ordering Codes

| | | | | | | | | | | | | | |
|-----------------|-----------|------------|---------------------|---|------|-----------------|------|---------------------|------|------------------|-------------------------|-------------|--|
| CSNNP | | ** | - | N | - | ** | - | S | - | 1 | 1 | Null | |
| | | | | | | | | | | | Code | Description | |
| | | | | | | | | | | | This code is always "1" | | |
| First Size Code | | Thread - A | | | | First Size Code | | Thread - B | | Adapter Material | | | |
| Code | Port Size | Code | Description | | Code | Port Size | Code | Description | Code | Description | | | |
| 03 | 3/8" | B | BSPP-F | | 03 | 3/8" | S | SAE-F (standard) | 1 | Low Carbon Steel | | | |
| 05 | 1/2" | N | NPT-F (standard) | | 05 | 1/2" | W4 | Sch. 40 Socket Weld | 2 | Stainless Steel | | | |
| 07 | 3/4" | S | SAE-F ORB | | 07 | 3/4" | N | NPT-F | | | | | |
| 10 | 1" | W4 | Sch. 40 Socket Weld | | 10 | 1" | B | BSPP-F | | | | | |
| 12 | 1 1/4" | | | | 12 | 1 1/4" | | | | | | | |
| 15 | 1 1/2" | | | | 15 | 1 1/2" | | | | | | | |
| 20 | 2" | | | | 20 | 2" | | | | | | | |

Alternate Thread "A" Selection
Replaces the "N" NPT-F standard with the "W4" Sch. 40 Socket Weld

HCSN High Pressure Coupling W/Pilot

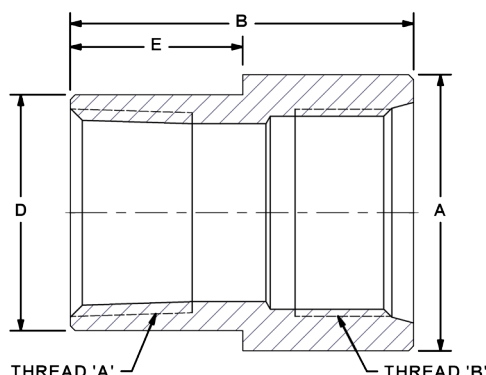
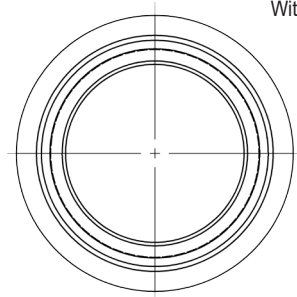
6000 PSI ~ Sizes from 3/8" to 2"



The HCSN is the High Pressure coupling with a difference - DMIC's original design with pilot facilitates tidy welding to the reservoir. HCSN adapters are offered to ease the transition for new power unit builders.

- Standard pilot for square placement on reservoir.
- EZ-Weld material.
- Made in U.S.A. rapid delivery.
- Pressure to 6000 PSI.

With Pilot



| HCSN | SAE Downline Dual Thread with Pilot | | | | |
|-------------------|-------------------------------------|---------------|------|------|------|
| | Port Size | Dimensions IN | | | |
| Port Codes | | A | B | C | D |
| B N S W4 | 3/8" | 1.00 | 1.41 | 0.81 | 0.71 |
| | 1/2" | 1.25 | 1.72 | 1.00 | 0.86 |
| | 3/4" | 1.50 | 1.98 | 1.25 | 0.99 |
| | 1" | 2.00 | 2.17 | 1.63 | 1.09 |
| | 1 1/4" | 2.38 | 2.25 | 2.00 | 1.13 |
| | 1 1/2" | 2.75 | 2.26 | 2.25 | 1.13 |
| | 2" | 3.38 | 2.41 | 2.88 | 1.21 |

Ordering Codes

| HCSN - ** - N - ** - S - 1 1 | | | | | | | | | | | Null <table><tr><th>Code</th><th>Description</th></tr><tr><td colspan="2">This code is always "1"</td></tr></table> | | Code | Description | This code is always "1" | | | | | | | | | | | | | | | | | | | | | | | | | | | | | | | | | | | | | | | | | | | | | | |
|---|---------------------|------|-----------|--------------------------------|------|----|------|----|------|----|---|----|--------|-------------|-------------------------|----|----|---|--|------|-------------|---|------------------|--|--|------|-----------|----|------|----|------|----|------|----|----|----|--------|----|--------|----|----|--|--|------|-------------|---|------------------|----|---------------------|---|-------|---|--------|--|--|------|-------------|---|------------------|---|-----------------|
| Code | Description | | | | | | | | | | | | | | | | | | | | | | | | | | | | | | | | | | | | | | | | | | | | | | | | | | | | | | | | | | | | |
| This code is always "1" | | | | | | | | | | | | | | | | | | | | | | | | | | | | | | | | | | | | | | | | | | | | | | | | | | | | | | | | | | | | | |
| First Size Code <table><tr><th>Code</th><th>Port Size</th></tr><tr><td>03</td><td>3/8"</td></tr><tr><td>05</td><td>1/2"</td></tr><tr><td>07</td><td>3/4"</td></tr><tr><td>10</td><td>1"</td></tr><tr><td>12</td><td>1 1/4"</td></tr><tr><td>15</td><td>1 1/2"</td></tr><tr><td>20</td><td>2"</td></tr></table> | | Code | Port Size | 03 | 3/8" | 05 | 1/2" | 07 | 3/4" | 10 | 1" | 12 | 1 1/4" | 15 | 1 1/2" | 20 | 2" | Thread - A <table><tr><th>Code</th><th>Description</th></tr><tr><td>N</td><td>NPT-F (standard)</td></tr></table> | | Code | Description | N | NPT-F (standard) | Second Size Code <table><tr><th>Code</th><th>Port Size</th></tr><tr><td>03</td><td>3/8"</td></tr><tr><td>05</td><td>1/2"</td></tr><tr><td>07</td><td>3/4"</td></tr><tr><td>10</td><td>1"</td></tr><tr><td>12</td><td>1 1/4"</td></tr><tr><td>15</td><td>1 1/2"</td></tr><tr><td>20</td><td>2"</td></tr></table> | | Code | Port Size | 03 | 3/8" | 05 | 1/2" | 07 | 3/4" | 10 | 1" | 12 | 1 1/4" | 15 | 1 1/2" | 20 | 2" | Thread - B <table><tr><th>Code</th><th>Description</th></tr><tr><td>S</td><td>SAE-F (standard)</td></tr><tr><td>W4</td><td>Sch. 40 Socket Weld</td></tr><tr><td>N</td><td>NPT-F</td></tr><tr><td>B</td><td>BSPP-F</td></tr></table> | | Code | Description | S | SAE-F (standard) | W4 | Sch. 40 Socket Weld | N | NPT-F | B | BSPP-F | Adapter Material <table><tr><th>Code</th><th>Description</th></tr><tr><td>1</td><td>Low Carbon Steel</td></tr><tr><td>2</td><td>Stainless Steel</td></tr></table> | | Code | Description | 1 | Low Carbon Steel | 2 | Stainless Steel |
| Code | Port Size | | | | | | | | | | | | | | | | | | | | | | | | | | | | | | | | | | | | | | | | | | | | | | | | | | | | | | | | | | | | |
| 03 | 3/8" | | | | | | | | | | | | | | | | | | | | | | | | | | | | | | | | | | | | | | | | | | | | | | | | | | | | | | | | | | | | |
| 05 | 1/2" | | | | | | | | | | | | | | | | | | | | | | | | | | | | | | | | | | | | | | | | | | | | | | | | | | | | | | | | | | | | |
| 07 | 3/4" | | | | | | | | | | | | | | | | | | | | | | | | | | | | | | | | | | | | | | | | | | | | | | | | | | | | | | | | | | | | |
| 10 | 1" | | | | | | | | | | | | | | | | | | | | | | | | | | | | | | | | | | | | | | | | | | | | | | | | | | | | | | | | | | | | |
| 12 | 1 1/4" | | | | | | | | | | | | | | | | | | | | | | | | | | | | | | | | | | | | | | | | | | | | | | | | | | | | | | | | | | | | |
| 15 | 1 1/2" | | | | | | | | | | | | | | | | | | | | | | | | | | | | | | | | | | | | | | | | | | | | | | | | | | | | | | | | | | | | |
| 20 | 2" | | | | | | | | | | | | | | | | | | | | | | | | | | | | | | | | | | | | | | | | | | | | | | | | | | | | | | | | | | | | |
| Code | Description | | | | | | | | | | | | | | | | | | | | | | | | | | | | | | | | | | | | | | | | | | | | | | | | | | | | | | | | | | | | |
| N | NPT-F (standard) | | | | | | | | | | | | | | | | | | | | | | | | | | | | | | | | | | | | | | | | | | | | | | | | | | | | | | | | | | | | |
| Code | Port Size | | | | | | | | | | | | | | | | | | | | | | | | | | | | | | | | | | | | | | | | | | | | | | | | | | | | | | | | | | | | |
| 03 | 3/8" | | | | | | | | | | | | | | | | | | | | | | | | | | | | | | | | | | | | | | | | | | | | | | | | | | | | | | | | | | | | |
| 05 | 1/2" | | | | | | | | | | | | | | | | | | | | | | | | | | | | | | | | | | | | | | | | | | | | | | | | | | | | | | | | | | | | |
| 07 | 3/4" | | | | | | | | | | | | | | | | | | | | | | | | | | | | | | | | | | | | | | | | | | | | | | | | | | | | | | | | | | | | |
| 10 | 1" | | | | | | | | | | | | | | | | | | | | | | | | | | | | | | | | | | | | | | | | | | | | | | | | | | | | | | | | | | | | |
| 12 | 1 1/4" | | | | | | | | | | | | | | | | | | | | | | | | | | | | | | | | | | | | | | | | | | | | | | | | | | | | | | | | | | | | |
| 15 | 1 1/2" | | | | | | | | | | | | | | | | | | | | | | | | | | | | | | | | | | | | | | | | | | | | | | | | | | | | | | | | | | | | |
| 20 | 2" | | | | | | | | | | | | | | | | | | | | | | | | | | | | | | | | | | | | | | | | | | | | | | | | | | | | | | | | | | | | |
| Code | Description | | | | | | | | | | | | | | | | | | | | | | | | | | | | | | | | | | | | | | | | | | | | | | | | | | | | | | | | | | | | |
| S | SAE-F (standard) | | | | | | | | | | | | | | | | | | | | | | | | | | | | | | | | | | | | | | | | | | | | | | | | | | | | | | | | | | | | |
| W4 | Sch. 40 Socket Weld | | | | | | | | | | | | | | | | | | | | | | | | | | | | | | | | | | | | | | | | | | | | | | | | | | | | | | | | | | | | |
| N | NPT-F | | | | | | | | | | | | | | | | | | | | | | | | | | | | | | | | | | | | | | | | | | | | | | | | | | | | | | | | | | | | |
| B | BSPP-F | | | | | | | | | | | | | | | | | | | | | | | | | | | | | | | | | | | | | | | | | | | | | | | | | | | | | | | | | | | | |
| Code | Description | | | | | | | | | | | | | | | | | | | | | | | | | | | | | | | | | | | | | | | | | | | | | | | | | | | | | | | | | | | | |
| 1 | Low Carbon Steel | | | | | | | | | | | | | | | | | | | | | | | | | | | | | | | | | | | | | | | | | | | | | | | | | | | | | | | | | | | | |
| 2 | Stainless Steel | | | | | | | | | | | | | | | | | | | | | | | | | | | | | | | | | | | | | | | | | | | | | | | | | | | | | | | | | | | | |
| Choose Adapter Size | | | | Alternate Thread "B" Selection | | | | | | | | | | | | | | | | | | | | | | | | | | | | | | | | | | | | | | | | | | | | | | | | | | | | | | | | | |

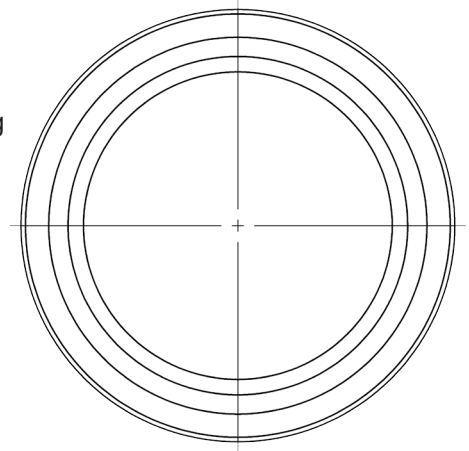
SW-FH61

SW-FH61 – Split Flange Head, Code 61, by Butt Weld



The SW-FH61 is ideal when developing custom fittings or when a non-standard solution is desired. This Code 61 Split Flange head is available in Carbon or Stainless Steel.

- Split Flange Head with O-Ring Groove.
- Available in Low Carbon Steel, 316 Stainless or 304 Stainless Steel.
- Does not include O-Ring or Split flanges.
- Please see FSL series for Split Flange Kits, including Hardware and O-Ring.



| SW-FH61 – Split Flange Head, Code 61, by Butt Weld | | | | |
|--|---------------|------|------|------|
| Port Size | Dimensions IN | | | |
| | A | B | C | D |
| ¾" | 1.50 | 0.98 | 0.75 | 1.25 |
| 1" | 1.75 | 0.94 | 1.00 | 1.25 |
| 1¼" | 2.00 | 0.94 | 1.25 | 1.25 |
| 1½" | 2.38 | 0.94 | 1.50 | 1.25 |
| 2" | 2.81 | 0.88 | 2.00 | 1.25 |
| 2½" | 3.31 | 1.38 | 2.50 | 1.75 |
| 3" | 4.00 | 1.50 | 3.00 | 1.88 |

Ordering Codes

SW-FH61 - ***** - *1

| Size Code | |
|-----------|-----------|
| Code | Port Size |
| 0750W | ¾" |
| 1000W | 1" |
| 1250W | 1¼" |
| 1500W | 1½" |
| 2000W | 2" |
| 2500W | 2½" |
| 3000W | 3" |
| 4000W | 4" - Call |
| 5000W | 5" - Call |
| 6000W | 6" - Call |

Choose Adapter Size
Replace ***** with the desired adapter size.

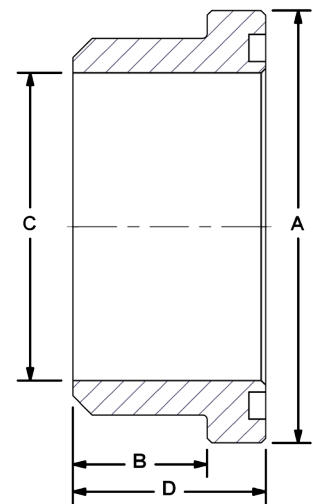
| Adapter Material | |
|------------------|------------------|
| Code | Description |
| 11 | Low Carbon Steel |
| 21 | Stainless Steel |

Alternate External Thread Standard

Replace the "S" SAE ORB standard thread connection with a choice from the "Thread Side" table. Please call to confirm price and availability.

Alternate Weld Connection Standard

DMIC does not offer any alternate weld connections for the FFW model adapter. For a Socket Weld variation, see SSW on page 7.



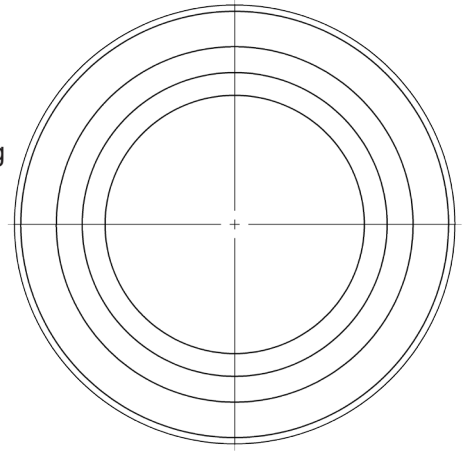
SW-FH62

SW-FH62 – Split Flange Head, Code 62, by Butt Weld



The SW-FH62 is ideal when developing custom fittings or when a non-standard solution is desired. This Code 62 Split Flange head is available in Carbon or Stainless Steel.

- Split Flange Head with O-Ring Groove.
- Available in Low Carbon Steel, 316 Stainless or 304 Stainless Steel.
- Does not include O-Ring or Split flanges.
- Please see FSH series for Split Flange Kits, including Hardware and O-Ring.



| SW-FH62 – Split Flange Head, Code 62, by Butt Weld | | | | |
|--|---------------|------|------|------|
| Port Size | Dimensions IN | | | |
| | A | B | C | D |
| 3/4" | 1.63 | 0.91 | 0.75 | 1.25 |
| 1" | 1.88 | 0.88 | 1.00 | 1.25 |
| 1 1/4" | 2.13 | 0.73 | 1.25 | 1.13 |
| 1 1/2" | 2.50 | 0.74 | 1.50 | 1.24 |
| 2" | 3.13 | 0.76 | 1.89 | 1.25 |
| 2 1/2" | 4.24 | 1.16 | 2.50 | 1.97 |
| 3" | 5.19 | 1.54 | 3.00 | 2.56 |

Ordering Codes

SW-FH62 - ***** - *1

| Size Code | |
|-----------|-----------|
| Code | Port Size |
| 0750W | 3/4" |
| 1000W | 1" |
| 1250W | 1 1/4" |
| 1500W | 1 1/2" |
| 2000W | 2" |
| 2500W | 2 1/2" |
| 3000W | 3" |
| 4000W | 4" - Call |
| 5000W | 5" - Call |
| 6000W | 6" - Call |

Choose Adapter Size
Replace ***** with the desired adapter size.

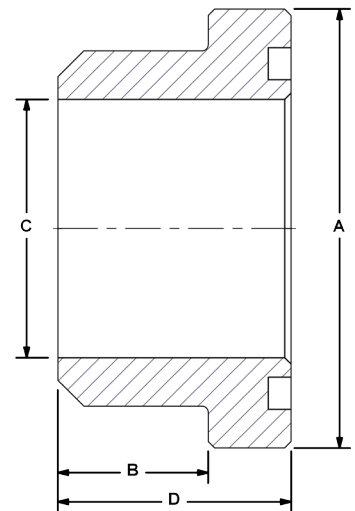
| Adapter Material | |
|------------------|------------------|
| Code | Description |
| 11 | Low Carbon Steel |
| 21 | Stainless Steel |

Alternate External Thread Standard

Replace the "S" SAE ORB standard thread connection with a choice from the "Thread Side" table. Please call to confirm price and availability.

Alternate Weld Connection Standard

DMIC does not offer any alternate weld connections for the FFW model adapter. For a Socket Weld variation, see SSW on page 7.



Due to our policy of continual product improvement, the specifications in this catalog may change without notice. When designing by spec, please request a certified print.



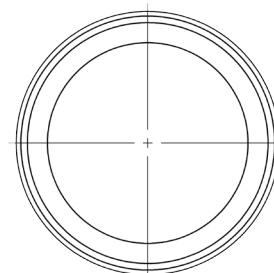
SW-BARB

Hose BARB by Butt Weld

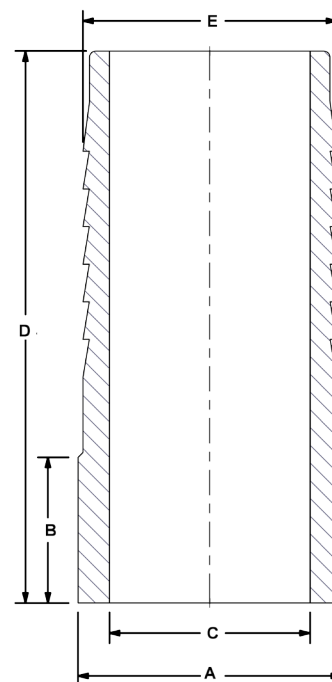


The SW-BARB allows for custom designs or weldments to achieve a non-standard fitting for a system. These Hose Barbs are available in Carbon or Stainless Steel.

- Hose BARB for welding (Butt Weld).
- Available in low carbon steel, 316 or 304 Stainless Steel.
- Sch to Butt Weld schedule 40.
- Suction to 400PSI.
- 3/4" up to 6".



| Hose BARB, by Butt Weld | | | | | |
|-------------------------|---------------|------|------|------|------|
| Port Size | Dimensions IN | | | | |
| | A | B | C | D | E |
| 3/4" | 0.81 | 0.73 | 0.63 | 2.19 | 0.76 |
| 1" | 1.06 | 0.73 | 0.88 | 2.19 | 1.02 |
| 1 1/4" | 1.31 | 0.73 | 1.00 | 2.75 | 1.27 |
| 1 1/2" | 1.56 | 0.73 | 1.29 | 2.75 | 1.52 |
| 2" | 2.12 | 0.70 | 1.75 | 3.19 | 2.02 |
| 2 1/2" | 2.57 | 0.72 | 2.25 | 3.75 | 2.52 |
| 3" | 3.06 | 0.73 | 2.80 | 4.25 | 3.02 |



Ordering Codes

SW-BARB - ***** - *1

| Size Code | |
|-----------|-----------|
| Code | Port Size |
| 0750W | 3/4" |
| 1000W | 1" |
| 1250W | 1 1/4" |
| 1500W | 1 1/2" |
| 2000W | 2" |
| 2500W | 2 1/2" |
| 3000W | 3" |
| 4000W | 4" - Call |
| 5000W | 5" - Call |
| 6000W | 6" - Call |

| Adapter Material | |
|------------------|------------------|
| Code | Description |
| 11 | Low Carbon Steel |
| 21 | Stainless Steel |

Choose Adapter Size
Replace ***** with the desired adapter size.

Alternate External Thread Standard

Replace the "S" SAE ORB standard thread connection with a choice from the "Thread Side" table. Please call to confirm price and availability.

Alternate Weld Connection Standard

DMIC does not offer any alternate weld connections for the FFW model adapter. For a Socket Weld variation, see SSW on page 7.

Due to our policy of continual product improvement, the specifications in this catalog may change without notice. When designing by spec, please request a certified print.



www.dmic.com
DMIC SSW Catalog
Copyright ©2020 Delaware Mfg.

SSW-ADD-2101
Page 8

Call Toll Free 1-800-248-3642
In Canada 1-800-320-3642



SWEL 45° Butt Weld Elbow

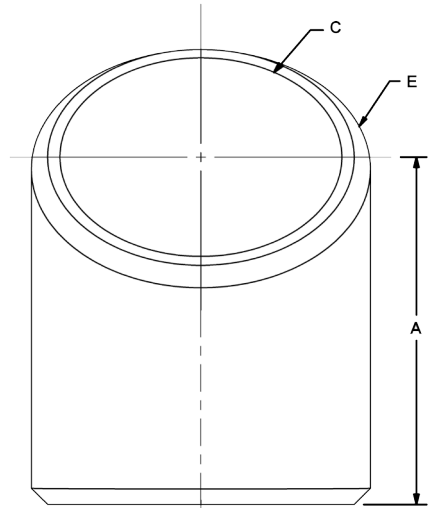
SWEL 45° for Custom Design



SWEL 45° for Custom Design and weldments to achieve a non-standard fitting for your system.

- SWEL 45 Weld Elbow
- Butt Weld Sch 400
- Suction to 400 PSI
- Available in Carbon Steel & Stainless Steel
- 3/4" up to 6"

| SWEL 45 Butt Weld Elbow | | | | |
|-------------------------|---------------|------|-------|--------|
| Port Size | Dimensions IN | | | |
| | A | C | E | Degree |
| 3/4" | 1.82 | 0.82 | 3.30 | 90 |
| 1" | 1.76 | 1.05 | 4.15 | 90 |
| 1 1/4" | 2.19 | 1.38 | 5.22 | 90 |
| 1 1/2" | 2.64 | 1.61 | 5.97 | 90 |
| 2" | 3.55 | 2.07 | 7.48 | 90 |
| 2 1/2" | 4.48 | 2.47 | 9.05 | 90 |
| 3" | 5.35 | 3.07 | 11.00 | 90 |



Ordering Codes

| SWEL45 | | ***** | *1 |
|-----------|-----------|------------------|------------------|
| Size Code | | Adapter Material | |
| Code | Port Size | Code | Description |
| 0750W | 3/4" | 11 | Low Carbon Steel |
| 1000W | 1" | 21 | Stainless Steel |
| 1250W | 1 1/4" | | |
| 1500W | 1 1/2" | | |
| 2000W | 2" | | |
| 2500W | 2 1/2" | | |
| 3000W | 3" | | |
| 4000W | 4" - Call | | |
| 5000W | 5" - Call | | |
| 6000W | 6" - Call | | |

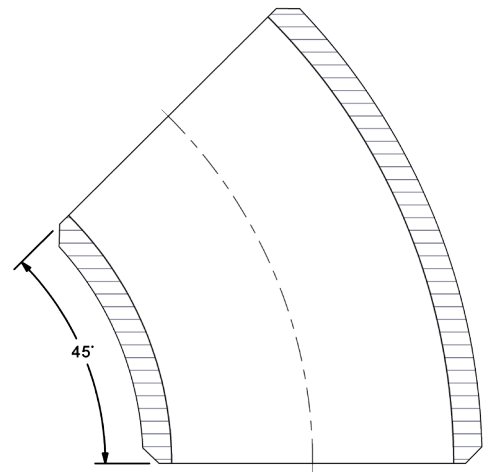
Choose Adapter Size
Replace ***** with the desired adapter size.

Alternate External Thread Standard

Replace the "S" SAE ORB standard thread connection with a choice from the "Thread Side" table. Please call to confirm price and availability.

Alternate Weld Connection Standard

DMIC does not offer any alternate weld connections for the FFW model adapter. For a Socket Weld variation, see SSW on page 7.



www.dmic.com
DMIC SSW Catalog
Copyright ©2020 Delaware Mfg.

SSW-ADD-2101
Page 9

Call Toll Free 1-800-248-3642
In Canada 1-800-320-3642



SWEL 90° Butt Weld Elbow

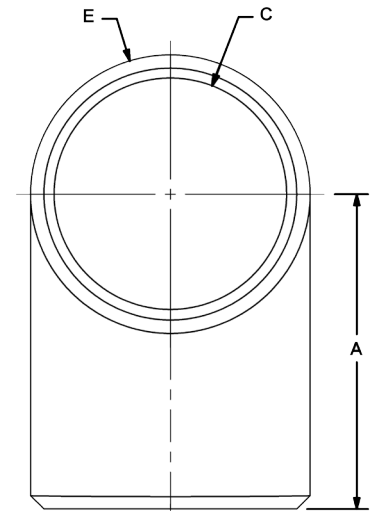
SWEL 90° for Custom Design

SWEL 90° for Custom Design and weldments to achieve a non-standard fitting for your system.



- SWEL Elbow - Long Radius
- Add SR for Short Radius
- Butt Weld Schedule 40
- For Custom Weld Applications
- Suction to 400PSI
- Carbon Steel & Stainless Steel

| SWEL 90 Butt Weld Elbow | | | | |
|-------------------------|---------------|------|-------|--------|
| Port Size | Dimensions IN | | | |
| | A | C | E | Degree |
| ¾" | 1.82 | 0.82 | 3.30 | 90 |
| 1" | 1.76 | 1.05 | 4.15 | 90 |
| 1¼" | 2.19 | 1.38 | 5.22 | 90 |
| 1½" | 2.64 | 1.61 | 5.97 | 90 |
| 2" | 3.55 | 2.07 | 7.48 | 90 |
| 2½" | 4.48 | 2.47 | 9.05 | 90 |
| 3" | 5.35 | 3.07 | 11.00 | 90 |



Ordering Codes

SWEL90 - ***** - *1 - SR

| Size Code | |
|-----------|-----------|
| Code | Port Size |
| 0750W | ¾" |
| 1000W | 1" |
| 1250W | 1¼" |
| 1500W | 1½" |
| 2000W | 2" |
| 2500W | 2½" |
| 3000W | 3" |
| 4000W | 4" - Call |
| 5000W | 5" - Call |
| 6000W | 6" - Call |

| Adapter Material | |
|------------------|------------------|
| Code | Description |
| 11 | Low Carbon Steel |
| 21 | Stainless Steel |

Add for Short Radius

Choose Adapter Size
Replace ***** with the desired adapter size.

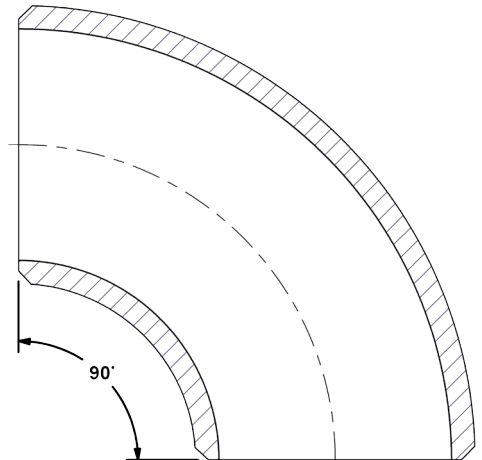
Alternate External Thread Standard

Replace the "S" SAE ORB standard thread connection with a choice from the "Thread Side" table. Please call to confirm price and availability.

Alternate Weld Connection Standard

DMIC does not offer any alternate weld connections for the FFW model adapter. For a Socket Weld variation, see SSW on page 7.

Due to our policy of continual product improvement, the specifications in this catalog may change without notice. When designing by spec, please request a certified print.



www.dmic.com
DMIC SSW Catalog
Copyright ©2020 Delaware Mfg.

SSW-ADD-2101
Page 10

Call Toll Free 1-800-248-3642
In Canada 1-800-320-3642



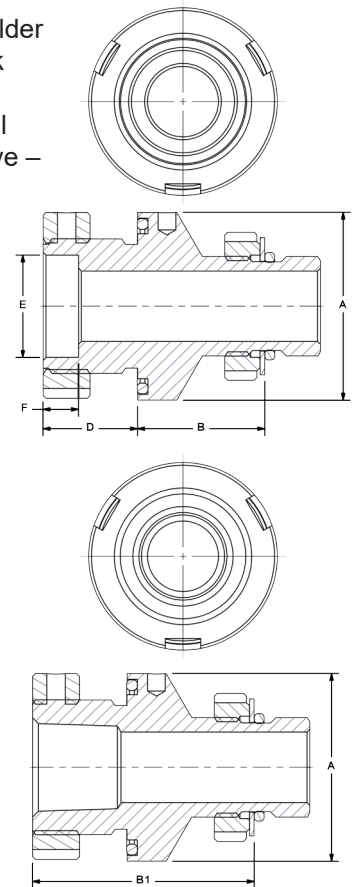
NWSNS Simplifier

NWSNS – No Weld Int-Ext threaded Simplifier



The NWSNS is an ideal solution for the production power unit builder when welding is not available. The NWSNS is secured with a lock ring featuring an O-Ring that seals against the reservoir wall. An internal thread allows mounting of strainer or baffle pipe. External SAE/BSPP swivel thread permits perfect alignment of shutoff valve – it's a win-win solution for speed and quality.

- No Weld design – Sealing against reservoir wall with choice of O-Ring material for fluid compatabilty.
- Standard and expanded SAE/BSPP ports.
- Choice of thread for internal connection.
- Available in Stainless Steel and special sealing.
- Suction to 400 PSI.



| NWSNS | | Suction Line Simplifier, Inline w/Internal Thread | | | | | | |
|-------------------|-----------|---|---------------|------|------|------|------|------|
| Port Code | Port Size | Pilot Dia. | Dimensions IN | | | | | |
| | | | A | B | B1 | D | E | F |
| B N S W4 | 3/4" | 1 7/16" | 2.00 | 1.35 | 2.35 | 1.00 | 1.09 | 0.38 |
| | 1" | 1 3/4" | 2.25 | 1.35 | 2.35 | 1.00 | 1.35 | 0.38 |
| | 1 1/4" | 1 5/8" | 2.62 | 1.41 | 2.41 | 1.00 | 1.69 | 0.50 |
| | 1 1/2" | 2 3/8" | 2.88 | 1.50 | 2.50 | 1.00 | 1.95 | 0.50 |
| | 2" | 2 7/8" | 3.38 | 1.50 | 2.50 | 1.00 | 2.41 | 0.63 |
| | 2 1/2" | 3 1/2" | 4.00 | 1.60 | 2.60 | 1.00 | 2.91 | 0.75 |
| | 3" | 4" | 4.50 | 1.54 | 2.54 | 1.00 | 3.54 | 0.75 |

Ordering Codes

NWSNS - ****** - **N** - ****** - **S** - **1** **1**

First Size Code

| Code | Port Size |
|------|-----------|
| 07 | 3/4" |
| 10 | 1" |
| 12 | 1 1/4" |
| 15 | 1 1/2" |
| 20 | 2" |
| 25 | 2 1/2" |
| 30 | 3" |
| 40 | 4" - Call |
| 50 | 5" - Call |
| 60 | 6" - Call |

Internal Conn - F

| Code | Description |
|------|------------------|
| B | BSPP-F |
| N | NPT-F (standard) |
| S | SAE-F ORB |

Choose Adapter Size
Replace ** with the desired adapter size.

Two different size codes selects step size option.

Second Size Code

| Code | Port Size |
|------|-----------|
| 07 | 3/4" |
| 10 | 1" |
| 12 | 1 1/4" |
| 15 | 1 1/2" |
| 20 | 2" |
| 25 | 2 1/2" |
| 30 | 3" |
| 40 | 4" - Call |
| 50 | 5" - Call |
| 60 | 6" - Call |

External Thread - M

| Code | Description |
|------|------------------|
| B | Swivel BSPP-M |
| S | Swivel SAE-M ORB |

Alternate Internal Connection (Old SWS type)
Replace the "N" NPT-F standard internal connection

Alternate External Thread Standard
Replace the "S" SAE-M standard thread connection with a choice from the "External Thread-M" table. Please call to confirm price and availability.

O-Ring Elastomer

| Code | Description |
|------|--------------------------|
| 1 | Buna-N (standard) |
| 2 | Ethylene Propylene "EPR" |
| 3 | Viton |

Adapter Material

| Code | Description |
|------|------------------|
| 1 | Low Carbon Steel |
| 2 | Stainless Steel |

Due to our policy of continual product improvement, the specifications in this catalog may change without notice. When designing by spec, please request a certified print.

