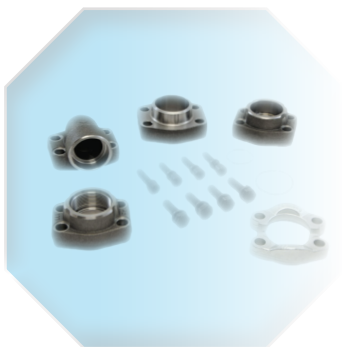
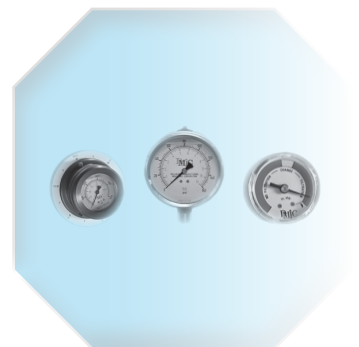
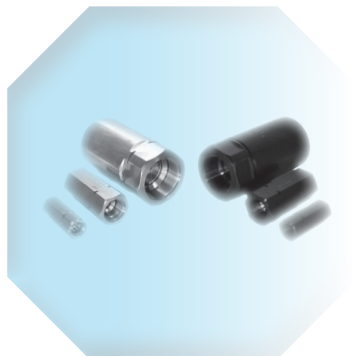
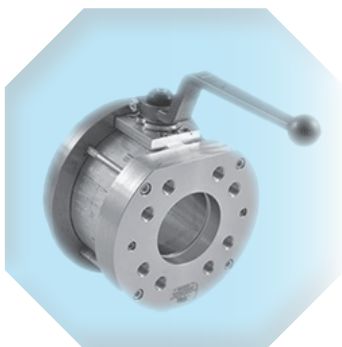




POWER UNIT LAYOUT SYSTEM

YOUR CHOICE FOR HYDRAULIC COMPONENTS



POWER UNIT LAYOUT SYSTEM

www.DMIC.com

SSW Power Unit Layout System



The Industry Accepted Standard in SAE/BSP Large Bore, Low Pressure Fluid Connections

Due to our policy of continual product improvement, the specifications in this catalog may change without notice. When designing by spec, please request a certified print.

For DMIC customers, “revolution” becomes EVOLUTION with an updated system of U.S. made valves and adapters that provide quality and uniformity improvements, support for international standards, and the superlative fit-and-finish of a system which has been conceived, solid-model CAD designed, and manufactured under one roof at our factory. Unlike others, DMIC manufactures the valves, adapters, and accessories to operate as a cohesive system that saves you engineering effort, production time, and labor requirements.

DMIC offers the progressive design house an expedient path to open systems designed around the latest SAE standards. Every adapter is dimensionally compatible across SAE and BSP threads. Available as “standards” that you can buy today.



Socket Weld to Thread

Connect imperial and metric threaded ports to Standard Pipe & Tube. Adapter prevents thermal damage to valves and contamination through absent welding. Swivel option allows precise angular alignment.

SSW Swivel Socket Weld, Socket Weld to Thread Inline.....	7
FSW Fixed Socket Weld, Socket Weld to Thread Inline.....	8



Hose Barb to Thread

The easy, leak proof way to connect suction hose to components via SAE/BSP Thread. Convenient 45° and 90° elbow models. Step size barb option allows designers to maintain nominal ID even through barb.

HBL Hose Barb Low Pressure, Suction Hose to Thread, Inline.....	9
BSE Barb Swivel Elbow, Suction Hose to Thread 90° Elbow	10
EBS Barb Swivel Elbow, Suction Hose to Thread 45° Elbow	11



Hose Barb Specialty Adapters

Designed in tandem with customer requests, these special purpose adapters allow you to connect suction/low pressure hoses where you need them. The ultimate convenience is the HBS Hose Barb Split Flange model. BBE and EBB terminate Pipe/Tube with prefabricated barb elbows.

HBS Hose Barb Split, Suction Hose to C.61 SF Head, Inline	12
SBE Split Barb Elbow, Suction Hose to C.61 SF Head, 90° Elbow.....	13
ESB Split Barb Elbow, Suction Hose to C.61 SF Head, 45° Elbow.....	14
BBE Butt Weld Barb Elbow, to Sch. 40 Pipe, 90°	15
EBB Butt Weld Barb Elbow, to Sch. 40 Pipe, 45°	16



SAE Split Flange Adapters

Terminate an SAE/BSP Thread with an SAE Split Flange Head.

SFM C.61 Split Flange Head to Thread, Inline.....	17
HSFM C.61 Split Flange Head to Thread, Inline	18
HSFH C.62 Split Flange Head to Thread, Inline	19
SSE C.61 Split Flange Head to Thread, 90° Elbow.....	20
ESS C.61 Split Flange Head to Thread, 45° Elbow.....	21



SAE 4-Bolt Companion Flanges

Ultimate flexibility in SAE Companion Flange Pad connections with UNC or optional Metric bolt holes. Choose SAE/BSP thread connection. An excellent way to bridge imperial to metric components.

FMC C.61 4-Bolt Companion Flange to Thread, Inline.....	22
SFC C.61 4-Bolt Companion Flange to Thread, 90° Elbow	23
ESC C.61 4-Bolt Companion Flange to Thread, 45° Elbow.....	24



SAE 4-Bolt Standard Flanges

SAE Flange Pad with through holes designed to accommodate both UNC and Metric fasteners. Swivel feature permits precise angular alignment of mating flange and/or valve, improving power unit quality and aesthetics.

FMM C.61 4-Bolt Standard Flange to Thread, Inline.....	25
SFE C.61 4-Bolt Standard Flange to Thread, 90° Elbow	26
ESF C.61 4-Bolt Standard Flange to Thread, 45° Elbow	27



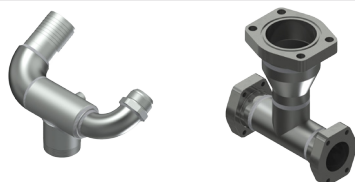
Reservoir Layout Tools

DMIC Suction Line Simplifiers improve power unit suction line layout by providing EZ-weld pilot with internal strainer mounting point.

SNS External Weld + Thread to Internal Thrd Simplifier, Inline.....	28
NWSNS No Weld Simplifier.....	29
SNE External Weld + Thread to Internal Thrd Simplifier, 90° Elbow.....	30
ESN External Weld + Thread to Internal Thrd Simplifier, 45° Elbow.....	31
CSN Series Reservoir Int-Ext Thread Downline, Adapters	32
SVE Swivel to Swivel, Adapters	33

Flat Weld Adapters with Thread and 4-Bolt Companion Pad Connections

FCM Reservoir Flat Weld, C.61 Companion	34
SFW Swivel Flat Weld, Inline	35
FFW Fixed Flat Weld, Inline.....	36



Custom SSW

Have a unique need? Let DMIC help you design the solution to your problem

Custom SSW components	37
-----------------------------	----



BVALP/BVAL Low Pressure Ball Valves

DMIC's redesigned BVALP/BVAL has been designed to last with quality construction features and compatibility with most DMIC Pre-Engineered Accessories such as Actuation, Limit Switch Kits, and Security Locking Option.

BVAL Low Pressure Ball Valve	38
BVALP Low Profile Suction Valve	39

How to order SSW Fluid Connectors

The designer has complete control over size, connections, materials, and sealing.

For Easy Ordering, examples are provided below

To order standard adapters, simply replace “**” in both blank spots, with the desired size code. Buyers of advanced adapters can override PORT SIZE, CONNECTION TYPE, and MATERIALS to achieve Step Size, Stainless Steel, and Standard connections that precisely match the exact application. Available optional overrides for each product are in their respective Ordering Codes.

Specify the port size and connection with a simple code.

Order basic adapters by inserting two size codes. The Ordering Codes for each adapter model look similar to the example below:

SSW - ** W4 - ** S - 1 1

Decide on the adapter size (eg. 25 = 2½"; see size code table below) and replace both “**” with the necessary size codes:

SSW - 25 W4 - 25 S - 1 1

Because the adapter model determines the default end connections, you can still order standard adapters just by inserting the size part into the part number template.

Connection Types

Imperial Threads

Code	Description
S	SAE ORB
N	NPT
J	JIC-M 37° Flare

Metric Threads

Code	Description
B	BSPP
T	BSPT-special

SAE Flanges

Code	Description
FM/FL	C.61 UNC 4-Bolt
GM	C.61 Metric 4-Bolt
SM	C.61 Split Flange Head

Special Flanges

Code	Description
AA	ANSI 150#
DA	DIN Flange

Suction Hose

Code	Description
HB	Hose Barb

Weld Connections

Code	Description
W4	Socket Weld Sch. 40 Pipe
WB4	Butt Weld Sch. 40 Pipe

Size Codes

Code	Port Size
07	¾"
10	1"
12	1¼"
15	1½"
20	2"
25	2½"
30	3"
40	4"
50	5"-Call
60	6"-Call

25 W4

Size Code

Expressed in 1/10ths of an inch. Select a valid size code from the Size Code Table.

Connection Type

Select a valid connection type from the table printed with each adapter.



How to order SSW Fluid Connectors

(Continued...)

Overriding the Size Code of one "End" to specify a Step Size adapter

Order step size adapters by modifying the code up or down by one size.

(For multi-size steps, please consult DMIC.)

HBL - 25 HB - 20 S - 1 1

This example specifies a **HBL Hose Barb** to Thread adapter that is 2½" on the Barb side and 2" on the SAE ORB side.

Overriding the Adapter Material or Seal Elastomer using Construction Codes

The Construction Code allow the Buyer to specify optional adapter and sealing materials for special applications and media.

For standard adapters, there is no need to specify or change the construction code.

- 1 1

Adapter Material

- 1: Low Carbon Steel (standard)
- 2: Stainless Steel
- 4: Aluminum (select models)

O-Ring Elastomer

- 1: Buna-N (standard)
- 2: Ethylene Propylene
- 3: Viton Fluoropolymer

Changing the Standard Adapter Configuration for Special Threads, Flanges, or Weld Connections

If a 2" SFM Split Flange to Thread adapter is needed, but instead of SAE ORB you would like BSPP male thread to SAE Split Flange:

SFM - 20 SM - 20 S - 1 1

SFM - 20 SM - 20 B - 1 1

In the SFM example (directly above), change the "S", which specifies SAE ORB, to B which specifies BSPP. Many common adapters ship from stock.

Please verify pricing and delivery with a DMIC Sales Associate at time of order.

We welcome your custom adapter request.



ISO 9001 CERTIFIED

www.dmic.com
DMIC Flange Catalog
Copyright ©2022 Delaware Mfg.

SSW-2207
Page 5

Call Toll Free 1-800-248-3642
In Canada 1-800-320-3642

Benefits of SSW Power Unit Layout System

More Accurate, Reliable and Cost Effective

Save Time in the Assembly Phase

Designers who spec the DMIC SSW Power Unit Layout System as the large bore fluid connection standard enjoy an immediate return on investment through minimal need for rework due to leakage and dimensional errors. Seldom does SSW not pay for itself on a power unit that uses it. That's why many major OEMs insist on DMIC SSW.

Power unit subsystems become more modular and repeatable because it's easy to lay out power unit lines and obtain layouts within tolerances.

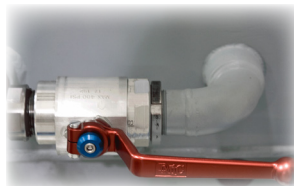
Keep it clean in the Weld Shop



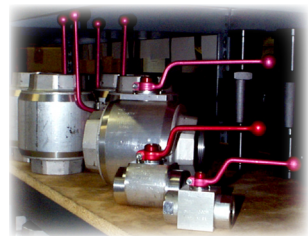
DMIC's SSW Power Unit Layout System allows you to reduce flushing requirements and start-up filtration stress during commissioning. Weld spatter is restricted to the adapter components, sparing valves from exposure to potential thermal damage. Systems with ambitious cleanliness/"high beta" targets will most certainly attain the target more rapidly, as well as experience fewer element changes during initial start up.

No Drips from Reservoir Leakage

Reservoir leakage is eliminated with an O-Ring sealed suction system from reservoir to pump inlet. Reduction of drips and cavitation troubles from conical thread connectors was a prime design goal when DMIC defined the ESAE standard in 1991. Today, you can engineer power units with O-Ring seal throughout in your choice of SAE, ESAE, and BSP.



Designed to Fit DMIC Ball Valves



DMIC Ball valves and SSW Power Unit Layout System adapters are made by the same craftsmen in the same factory in the USA. There is never a question of compatibility or fit.

When specifying a DMIC product, it may incorporate in the production channel when the catalog was printed. Running improvements are incorporated as a part of our continual product development.

When designing by spec, please request a certified print.

Widest Choice of Configurations

DMIC is geared to deliver the widest range of Inline, 90° and 45° Elbow, Stainless Steel, Step Size, and custom configurations, often within hours of your order.

The DMIC factory protects and supports local Stocking Distributors with comprehensive inventory, direct line to in-house Technical Sales and Engineering, drop shipment capability, same-day shipping of most orders, and special and custom product capabilities for OEM volume and blanket orders.



Protecting Your Investment

DMIC developed the SSW Power Unit Layout System at a time when top of the line power units routinely shipped with large bore connections in NPT.

Today, DMIC is at the forefront, working with dominant global standards organizations in promoting the establishment of non-proprietary large bore connection standards. You can be sure your investment in DMIC's SSW Power Unit Layout System today is supported in the long haul.

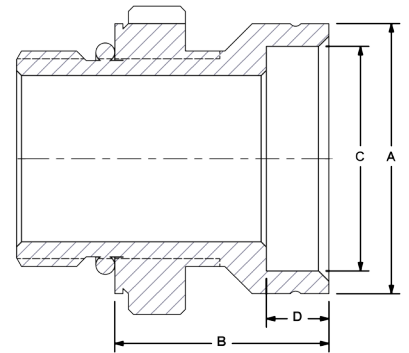
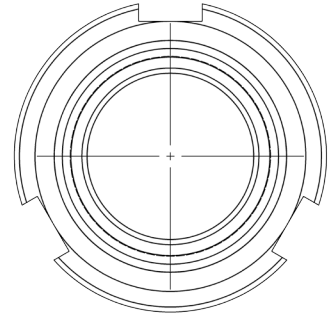
SSW Swivel Socket Weld

Pipe/Tube to SAE/BSP thread ~ Sizes from 3/4" to 6"



The SSW Swivel Socket Weld adapter is the namesake of the SSW product family. Available with SAE O-Ring, and BSP.

- Swivel design with lock ring permits precise alignment on threaded side after weld is complete.
- Valves can be absent during welding to eliminate contamination and heat damage.
- Reduced skilled labor requirement and improved repeatability for all skill classes.
- Made in U.S.A. for fast delivery and top quality.



SSW Socket Weld to SAE/BSP Thread, Swivel					
Port Codes	Port Size	Dimensions IN			
		A	B	C	D
W4 HT MP MT S B	3/4"	1.38	1.27	1.09	0.38
	1"	1.63	1.28	1.35	0.38
	1 1/4"	2.00	1.40	1.69	0.38
	1 1/2"	2.25	1.40	1.95	0.38
	2"	2.75	1.40	2.41	0.38
	2 1/2"	3.38	1.46	2.91	0.38
	3"	4.00	1.65	3.54	0.50
	4"	5.00	1.65	4.54	0.50

Ordering Codes

SSW - ** W4 - ** S - 1 1

O-Ring Elastomer	
Code	Description
1	Buna-N (standard)
2	Ethylene Propylene "EPR"
3	Viton

First Size Code	
Code	Port Size
07	3/4" - Call
10	1"
12	1 1/4"
15	1 1/2"
20	2"
25	2 1/2"
30	3"
40	4"
50	5" - Call
60	6" - Call

Socket Weld Side	
Code	Description
W4	Sch. 40 Pipe (standard)
HT	Hyd Tube (SAE J524 Type)
MP	Metric Pipe
MT	Metric Tube

Choose Adapter Size

Replace ** with the desired adapter size.

Two different size codes selects step size option.

Second Size Code	
Code	Port Size
07	3/4" - Call
10	1"
12	1 1/4"
15	1 1/2"
20	2"
25	2 1/2"
30	3"
40	4"
50	5" - Call
60	6" - Call

Thread Side	
Code	Description
S	SAE ORB (Standard)
B	BSPP

Adapter Material	
Code	Description
1	Low Carbon Steel
2	Stainless Steel

Alternate Thread Standard

Replace "S" SAE ORB standard thread connection with a choice from the "Thread Side" Table. Please call to confirm price and availability.

Alternate Weld Connection Standard

Replace the "W4" standard weld connection with a choice from the "Weld Side" table. Please call to confirm price and availability.



www.dmic.com
DMIC Flange Catalog
Copyright ©2022 Delaware Mfg.

SSW-2207
Page 7

Call Toll Free 1-800-248-3642
In Canada 1-800-320-3642

Due to our policy of continual product improvement, the specifications in this catalog may change without notice. When designing by spec, please request a certified print.

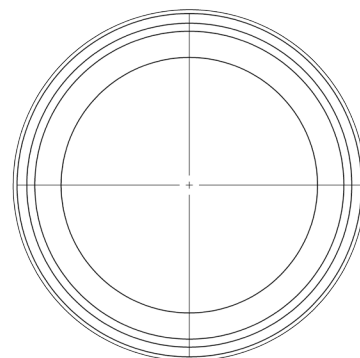
FSW Fixed Socket Weld

Pipe/Tube to SAE/BSP thread ~ Sizes from 3/4" to 6"

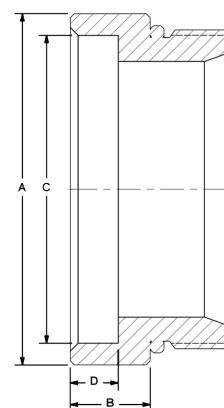


The FSW Fixed Socket Weld adapter provides the functionality of SSW without the swivel feature. For flat weld applications, see the complete array of Reservoir Weld adapters starting on page 26.

- Valves can be absent during welding to eliminate contamination and heat damage.
- Reduced labor requirement and improved repeatability result in better quality power units.
- Made in U.S.A. for fast delivery and top quality in sizes up to 6" (Suction to 400 PSI).



FSW	Socket Weld to SAE/BSP Thread, Non-Swivel					
	Port Codes	Port Size	Dimensions IN			
A			B	C	D	
W4 HT MP MT S B		¾"	1.38	0.63	1.09	0.38
		1"	1.63	0.63	1.35	0.38
		1¼"	2.00	0.63	1.69	0.38
		1½"	2.25	0.63	1.95	0.38
		2"	2.75	0.63	2.41	0.38
		2½"	3.38	0.63	2.91	0.38
		3"	4.00	0.75	3.54	0.50
		4"	5.00	0.75	4.54	0.50



Ordering Codes

FSW

- **

W4

- **

S

- 1

1

First Size Code

Code	Port Size
07	¾"
10	1"
12	1¼"
15	1½"
20	2"
25	2½"
30	3"
40	4"
50	5" - Call
60	6" - Call

Socket Weld Side

Code	Description
W4	Sch. 40 Pipe (standard)
HT	Hyd Tube (SAE J524 Type)
MP	Metric Pipe
MT	Metric Tube

Choose Adapter Size

Replace ** with the desired adapter size.

Two different size codes selects step size option.

Second Size Code

Code	Port Size
07	¾"
10	1"
12	1¼"
15	1½"
20	2"
25	2½"
30	3"
40	4"
50	5" - Call
60	6" - Call

Thread Side

Code	Description
S	SAE ORB (Standard)
B	BSPP

Alternate Thread Standard

Replace "S" SAE ORB standard thread connection with a choice from the "Thread Side" Table. Please call to confirm price and availability.

O-Ring Elastomer

Code	Description
1	Buna-N (standard)
2	Ethylene Propylene "EPR"
3	Viton

Adapter Material

Code	Description
1	Low Carbon Steel
2	Stainless Steel

Alternate Weld Connection Standard

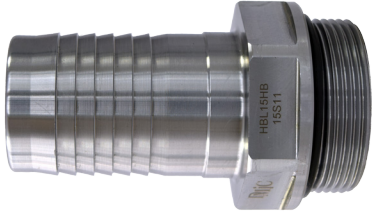
Replace the "W4" standard weld connection with a choice from the "Weld Side" table. Please call to confirm price and availability.



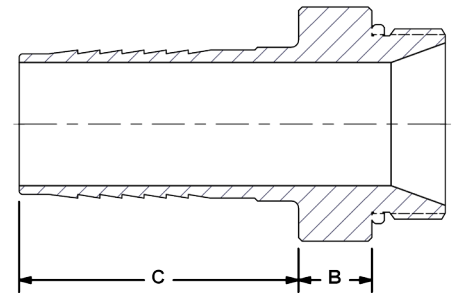
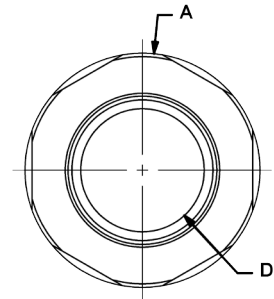
HBL Barb to Thread

Terminate to hose with this O-Ring sealed “staple” adapter

DMIC's HBL continues an O-ring sealed pipe run onto a U.S. or metric ID hose. Typically used for a segment from shutoff valve to pump inlet.



- Eliminates classic leakage point of “plumbing” NPT hose barbs, reduces cavitation worries.
- Compatibility with SAE extended size ranges allow end-to-end O-Ring seal to 6" size.
- Rapid delivery of stepsize barbs, designers can maintain nominal ID even along hose segments.
- Rapid delivery of valves & adapters up to 4" size.
- Suction to 400 PSI.



HBL		Hose Barb to SAE/BSP Thread Inline			
Port Codes	Port Size	Dimensions IN			
		A	B	C	D
HB HM S B	¾"	1.38	0.63	1.82	0.63
	1"	1.76	0.63	1.81	0.88
	1¼"	2.00	0.63	2.38	1.05
	1½"	2.25	0.63	2.38	1.25
	2"	2.75	0.63	2.82	1.75
	2½"	3.38	0.63	3.38	2.25
	3"	4.00	0.75	3.88	2.75
	4"	5.00	0.75	4.38	3.75

Ordering Codes

HBL		**		HB		**		S		1 1	
First Size Code		Hose Barb Side		Second Size Code		Thread Side		O-Ring Elastomer		Adapter Material	
Code	Port Size	Code	Description	Code	Port Size	Code	Description	Code	Description	Code	Description
07	¾"	HB	Inch Barb (Standard)	07	¾"	S	SAE ORB (Standard)	1	Buna-N (standard)	1	Low Carbon Steel
10	1"	HM	Metric Barb	10	1"	B	BSPP	2	Ethylene Propylene "EPR"	2	Stainless Steel
12	1¼"			12	1¼"			3	Viton		
15	1½"			15	1½"						
20	2"			20	2"						
25	2½"			25	2½"						
30	3"			30	3"						
40	4"			40	4"						
50	5" - Call			50	5" - Call						
60	6" - Call			60	6" - Call						

Choose Adapter Size

Replace ** with the desired adapter size.

Two different size codes selects step size option.

Alternate Hose Barb Connection Standard

Replace the "HB" inch-barb connection (U.S.A.) with metric barb for export. Please call to confirm price and availability.

Alternate Thread Standard

Replace the "S" SAE ORB standard thread connection with a choice from the "Thread Side" table. Please call to confirm price and availability.



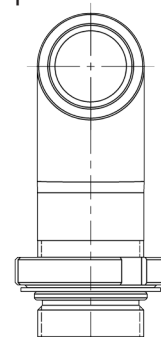
BSE Barb to Thread 90°

Great for smooth radius bends to avoid hose kinking ~ Sizes from 3/4" to 6"

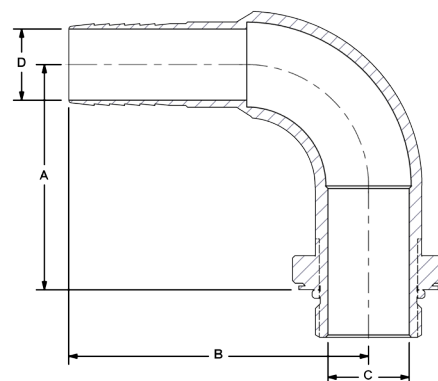


BSE is a 90° version of the HBL which is particularly useful for L-shaped reservoirs. Swivel ring feature permits precise alignment, eliminating variance in a production environment. Fast delivery up to 4" size.

- Available in SAE / BSP in sizes up to 6".
- Performance matched with DMIC Ball Valves for low flow restriction and mechanical rigidity.
- Results in professional looking power units.
- Eliminates leakage point with O-Ring seal up to 6".
- Stepsize model options allow full flow ID with barbs.
- Suction to 400 PSI.



BSE		Hose Barb to SAE/BSP Thread 90° Elbow			
Port Codes	Port Size	Dimensions IN			
		A	B	C	D
HB HM S B	3/4"	2.78	3.69	0.75	0.63
	1"	2.79	3.69	1.00	0.88
	1 1/4"	3.29	4.63	1.25	1.00
	1 1/2"	3.65	5.00	1.50	1.28
	2"	4.42	6.19	2.00	1.75
	2 1/2"	5.22	7.50	2.50	2.25
	3"	6.16	8.75	3.00	2.75
	4"	7.67	10.75	4.00	3.75



Ordering Codes

BSE - ****** **HB** - ****** **S** - **1** **1**

First Size Code	
Code	Port Size
07	3/4"
10	1"
12	1 1/4"
15	1 1/2"
20	2"
25	2 1/2"
30	3"
40	4"
50	5" - Call
60	6" - Call

Hose Barb Side	
Code	Description
HB	Inch Barb (Standard)
HM	Metric Barb

Choose Adapter Size
Replace ** with the desired adapter size.
Two different size codes selects step size option.

Second Size Code	
Code	Port Size
07	3/4"
10	1"
12	1 1/4"
15	1 1/2"
20	2"
25	2 1/2"
30	3"
40	4"
50	5" - Call
60	6" - Call

Thread Side	
Code	Description
S	SAE ORB (Standard)
B	BSPP

Alternate Hose Barb Connection Standard
Replace the "HB" inch-barb connection (U.S.A.) with metric barb for export. Please call to confirm price and availability.

Alternate Thread Standard
Replace the "S" SAE ORB standard thread connection with a choice from the "Thread Side" table. Please call to confirm price and availability.

O-Ring Elastomer	
Code	Description
1	Buna-N (standard)
2	Ethylene Propylene "EPR"
3	Viton

Adapter Material	
Code	Description
1	Low Carbon Steel
2	Stainless Steel

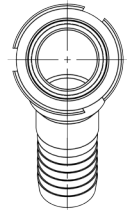
EBS Barb to Thread 45°

Great for smooth radius bends to avoid hose kinking ~ Sizes from 3/4" to 6"

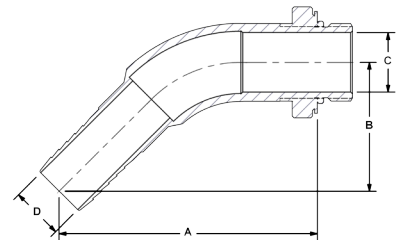
EBS is the 45° version of the HBL Hose Barb connectors. Useful for flooded suction and overhead reservoir applications.



- Available in SAE / BSP in sizes up to 6".
- Performance matched with DMIC Ball Valves for low flow restriction and mechanical rigidity.
- Results in professional looking power units.
- Eliminates leakage point with O-Ring seal up to 6".
- Stepsize model options allow full flow ID with hose barbs - see Dimension D for nominal bore size.
- Suction to 400 PSI.



EBS		Hose Barb to SAE/BSP Thread 45° Elbow			
Port Codes	Port Size	Dimensions IN			
		A	B	C	D
HB HM S B	3/4"	4.11	2.08	0.75	0.63
	1"	4.34	2.17	1.00	0.88
	1 1/4"	5.08	2.65	1.25	1.00
	1 1/2"	5.25	2.74	1.50	1.28
	2"	6.03	3.23	2.00	1.75
	2 1/2"	7.11	3.89	2.50	2.25
	3"	8.08	4.42	3.00	2.75
	4"	9.28	5.13	4.00	3.75



Ordering Codes

EBS - ****** **HB** - ****** **S** - **1** **1**

O-Ring Elastomer	
Code	Description
1	Buna-N (standard)
2	Ethylene Propylene "EPR"
3	Viton

First Size Code	
Code	Port Size
07	3/4"
10	1"
12	1 1/4"
15	1 1/2"
20	2"
25	2 1/2"
30	3"
40	4"
50	5" - Call
60	6" - Call

Hose Barb Side	
Code	Description
HB	Inch Barb (Standard)
HM	Metric Barb

Choose Adapter Size
Replace ** with the desired adapter size.
Two different size codes selects step size option.

Second Size Code	
Code	Port Size
07	3/4"
10	1"
12	1 1/4"
15	1 1/2"
20	2"
25	2 1/2"
30	3"
40	4"
50	5" - Call
60	6" - Call

Thread Side	
Code	Description
S	SAE ORB (Standard)
B	BSPP

Adapter Material	
Code	Description
1	Low Carbon Steel
2	Stainless Steel

Alternate Hose Barb Connection Standard
Replace the "HB" inch-barb connection (U.S.A.) with metric barb for export. Please call to confirm price and availability.

Alternate Thread Standard
Replace the "S" SAE ORB standard thread connection with a choice from the "Thread Side" table. Please call to confirm price and availability.

Due to our policy of continual product improvement, the specifications in this catalog may change without notice. When designing by spec, please request a certified print.



www.dmic.com
DMIC Flange Catalog
Copyright ©2022 Delaware Mfg.

SSW-2207
Page 11

Call Toll Free 1-800-248-3642
In Canada 1-800-320-3642

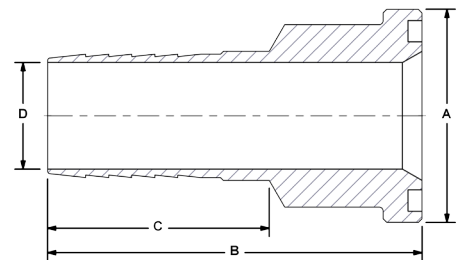
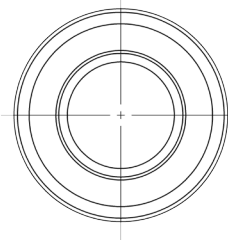
HBS Barb to Split Flange Head

Terminate to hose with this O-Ring sealed “staple” adapter



The HBS connector ingeniously permits a reliable O-Ring sealed junction between the inlet hose and SAE 4-Bolt pad components. Designers can have O-Ring sealing end-to-end, from reservoir to pump inlet, even with suction hose runs.

- Offered in all SSW to SAE J518 size possibilities, including step size and metric barb options.
- Sizes to 6" nominal ID.
- Suction to 400 PSI.
- Carbon Steel part number, see catalog F04 for other options.



HBS		Barb to SAE Split Flange Head, Inline				
Port Codes	Port Size	Dimensions IN				Split Flange Kit (carbon steel)
		A	B	C	D	
HB HM SM	¾"	1.50	3.06	1.81	0.63	FSL-0750SK
	1"	1.75	3.06	1.81	0.88	FSL-1000SK
	1¼"	2.00	3.63	2.38	1.05	FSL-1250SK
	1½"	2.38	3.63	2.38	1.28	FSL-1500SK
	2"	2.81	4.07	2.82	1.75	FSL-2000SK
	2½"	3.31	5.13	3.38	2.25	FSL-2500SK
	3"	4.00	5.75	3.54	2.75	FSL-3000SK
	4"	5.00	6.13	4.26	3.75	FSL-4000SK

Ordering Codes

HBS

**

HB

**

SM

1

1

Null	
Code	Description
This code is always "1"	

First Size Code	
Code	Port Size
07	¾"
10	1"
12	1¼"
15	1½"
20	2"
25	2½"
30	3"
40	4"
50	5" - Call
60	6" - Call

Hose Barb Side	
Code	Description
HB	Inch Barb (Standard)
HM	Metric Barb

Choose Adapter Size
Replace ** with the
desired adapter size.

Two different size codes
selects step size option.

Second Size Code	
Code	Port Size
07	¾"
10	1"
12	1¼"
15	1½"
20	2"
25	2½"
30	3"
40	4"
50	5" - Call
60	6" - Call

Split Flange Side	
Code	Description
SM	C.61 Split Flange Head

Metric Hose Barb Connection
Adapters supplied in metric market locales use metric-barb
IDs. Please call to confirm price and availability.

Adapter Material	
Code	Description
1	Low Carbon Steel
2	Stainless Steel

Choose Adapter Size
Replace ** with the desired adapter size.
Two different size codes selects step size option.

Metric Hose Barb Connection
Adapters supplied in metric market locales use metric-barb IDs. Please call to confirm price and availability.



www.dmic.com
DMIC Flange Catalog
Copyright ©2022 Delaware Mfg.

Due to our policy of continual product improvement, the specifications in this catalog may change without notice. When designing by spec, please request a certified print.

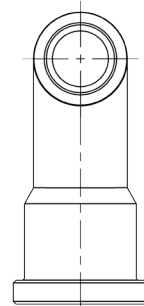
SBE Barb to S/F Head 90°

Properly radiused adapter for tight access to pump inlets

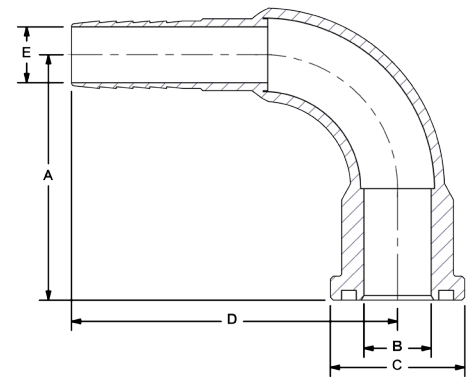


The SBE 90° split to barb elbows are typically used at the inlet of SAE Flange pumps to terminate a suction hose run. Rugged mechanical construction provides durability at a classic power unit leak point.

- Standard SAE Flange Head mounts with C.61 Split.
- Flange Kit to your pump's 4-Bolt Companion Pad.
- Smooth bend radius aids laminar flow and reduces pressure drop.
- Optional oversize barb allows designers to preserve nominal line ID even on the hose segment.
- Suction to 400 PSI.
- Carbon Steel part number, see catalog F04 for other options.



SBE		Barb to Split Flange, 90° Elbow					
Port Codes	Port Size	Dimensions IN					Split Flange Kit (carbon steel)
		A	B	C	D	E	
HB HM SM	¾"	2.75	0.75	1.50	3.69	0.63	FSL-0750SK
	1"	2.75	1.00	1.75	3.69	0.88	FSL-1000SK
	1¼"	3.13	1.25	2.00	4.63	1.00	FSL-1250SK
	1½"	3.50	1.50	2.38	5.00	1.28	FSL-1500SK
	2"	4.25	2.00	2.81	6.19	1.75	FSL-2000SK
	2½"	5.50	2.50	3.31	7.50	2.25	FSL-2500SK
	3"	6.37	3.00	4.00	8.75	2.75	FSL-3000SK
	4"	7.75	4.00	5.00	10.75	3.75	FSL-4000SK



Ordering Codes

SBE

**

HB

**

SM

1

1

Null

Code	Description
This code is always "1"	

First Size Code

Code	Port Size
07	¾"
10	1"
12	1¼"
15	1½"
20	2"
25	2½"
30	3"
40	4"
50	5" - Call
60	6" - Call

Hose Barb Side

Code	Description
HB	Inch Barb (Standard)
HM	Metric Barb

Second Size Code

Code	Port Size
07	¾"
10	1"
12	1¼"
15	1½"
20	2"
25	2½"
30	3"
40	4"
50	5" - Call
60	6" - Call

Split Flange Side

Code	Description
SM	C.61 Split Flange Head

Adapter Material

Code	Description
1	Low Carbon Steel
2	Stainless Steel

Choose Adapter Size

Replace ** with the desired adapter size.

Two different size codes selects step size option.

Metric Hose Barb Connection

Adapters supplied in metric market locales use metric-barb IDs. Please call to confirm price and availability.

Choose Adapter Size
Replace ** with the desired adapter size.
Two different size codes selects step size option.

Metric Hose Barb Connection
Adapters supplied in metric market locales use metric-barb IDs. Please call to confirm price and availability.

Due to our policy of continual product improvement, the specifications in this catalog may change without notice. When designing by spec, please request a certified print.



www.dmic.com
DMIC Flange Catalog
Copyright ©2022 Delaware Mfg.

SSW-2207
Page 13

Call Toll Free 1-800-248-3642
In Canada 1-800-320-3642

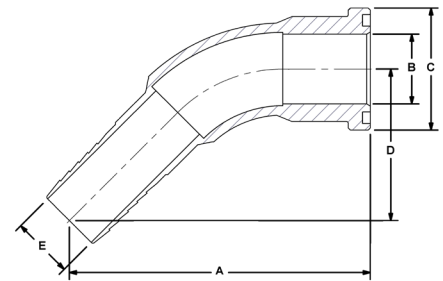
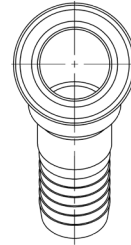
ESB Barb to S/F Head 45°

A direct connection to your pump's inlet



The ESB 45° elbows are an elegant routing tool for specific pump to reservoir geometries. Quick order with a Split Flange Kit for a fast and easy solution.

- Standard SAE Flange Head mounts with C.61 Split Flange Kit to your pump's 4-Bolt Companion Pad.
- Smooth bend radius aids laminar flow and reduces pressure drop.
- Optional oversize barb allows designers to preserve nominal line ID even on the hose segment.
- Made in U.S.A. for rapid delivery, even in Stainless Steel.
- Suction to 400 PSI.
- Carbon Steel part number, see catalog F04 for other options.



ESB		Barb to Split Flange Head, 45° Elbow					
Port Codes	Port Size	Dimensions IN					Split Flange Kit (Carbon Steel)
		A	B	C	D	E	
HB HM SM	3/4"	4.08	0.75	1.50	2.08	0.63	FSL-0750SK
	1"	4.30	1.00	1.75	2.17	0.88	FSL-1000SK
	1 1/4"	4.90	1.25	2.00	2.65	1.00	FSL-1250SK
	1 1/2"	5.11	1.50	2.38	2.74	1.28	FSL-1500SK
	2"	5.86	2.00	2.81	3.23	1.75	FSL-2000SK
	2 1/2"	7.39	2.50	3.31	3.89	2.25	FSL-2500SK
	3"	8.29	3.00	4.00	4.42	2.75	FSL-3000SK
	4"	9.38	4.00	5.00	5.13	3.75	FSL-4000SK

Ordering Codes

ESB - **		HB - **		SM - 1 1		Null	
						Code	Description
						This code is always "1"	
First Size Code		Hose Barb Side		Second Size Code		Split Flange Side	
Code	Port Size	Code	Description	Code	Port Size	Code	Description
07	3/4"	HB	Inch Barb (Standard)	07	3/4"	SM	C.61 Split Flange Head
10	1"			10	1"		
12	1 1/4"			12	1 1/4"		
15	1 1/2"			15	1 1/2"		
20	2"			20	2"		
25	2 1/2"			25	2 1/2"		
30	3"			30	3"		
40	4"			40	4"		
50	5" - Call			50	5" - Call		
60	6" - Call			60	6" - Call		
						Adapter Material	
						Code	Description
						1	Low Carbon Steel
						2	Stainless Steel

Choose Adapter Size
Replace ** with the
desired adapter size.
Two different size codes
selects step size option.

Metric Hose Barb Connection
Adapters supplied in metric market locales use metric-barb
IDs. Please call to confirm price and availability.



www.dmic.com
DMIC Flange Catalog
Copyright ©2022 Delaware Mfg.

Due to our policy of continual product improvement, the specifications in this catalog may change without notice. When designing by spec, please request a certified print.

SSW-2207
Page 14

Call Toll Free 1-800-248-3642
In Canada 1-800-320-3642

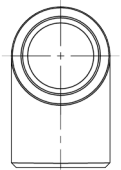
BBE Prefab Barb to 90° Elbow

Terminate your Sch. 40 pipe run with a professionally made barb

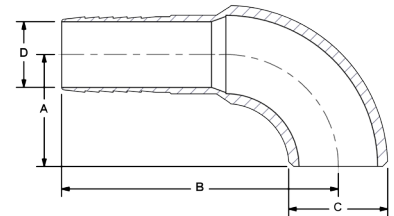


The BBE is a ready to use 90° elbow terminated with a genuine DMIC hose barb. This adapter was developed in response to customer requests for an easy way to terminate Sch. 40 pipe runs with a hose barb. Also offered in EBB 45° version: See pg. 16.

- Standard based radius and hose barb saves time and money compared to in-house fabrication.
- Repeatable results every time.
- Available in Stainless Steel.
- Available step size barb preserves nominal ID in barb.
- Suction to 400 PSI.



BBE	Prefab Barb to 90° Elbow				
	Port Size	Dimensions IN			
Port Codes		A	B	C	D
HB HM WB4	¾"	1.50	3.69	1.05	0.63
	1"	1.50	3.69	1.31	0.88
	1¼"	1.88	4.63	1.66	1.00
	1½"	2.25	5.00	1.91	1.28
	2"	3.00	6.19	2.38	1.75
	2½"	3.75	7.50	2.88	2.25
	3"	4.50	8.75	3.50	2.75
	4"	6.00	10.75	4.50	3.75



Ordering Codes

The diagram illustrates the structure of a 10-digit code, breaking it down into its constituent parts and their meanings:

- BBE**: Base Base End
- First Size Code**: A 2-digit code (07 to 60) corresponding to the Port Size.
- HB**: Hose Barb
- Hose Barb Side**: A 2-digit code (HB for Inch Barbs, HM for Metric Barbs) indicating the side of the connection.
- WB4**: Welded Butt
- Second Size Code**: A 2-digit code (07 to 60) corresponding to the Port Size.
- Sch.40 Butt Weld**: A 2-digit code (WB4) indicating the type of weld.
- Adapter Material**: A 2-digit code (1 for Low Carbon Steel, 2 for Stainless Steel) indicating the material of the adapter.
- Null**: A 2-digit code (00) indicating no specific material or size.

First Size Code

Code	Port Size
07	3/4"
10	1"
12	1 1/4"
15	1 1/2"
20	2"
25	2 1/2"
30	3"
40	4"
50	5"
60	6"

Hose Barb Side

Code	Description
HB	Inch Barb (Standard)
HM	Metric Barb

Second Size Code

Code	Port Size
07	3/4"
10	1"
12	1 1/4"
15	1 1/2"
20	2"
25	2 1/2"
30	3"
40	4"
50	5" - Call
60	6" - Call

Sch.40 Butt Weld

Code	Description
WB4	Butt Weld Pipe

Adapter Material

Code	Description
1	Low Carbon Steel
2	Stainless Steel

Null

Code	Description
00	This code is always "1"

Choose Adapter Size
Replace ** with the desired adapter size.
Two different size codes selects step size option.

Metric Hose Barb Connection
Adapters supplied in metric market locales use metric-barb IDs. Please call to confirm price and availability. Not available in U.S.A.

Due to our policy of continual product improvement, the specifications in this catalog may change without notice. When designing by spec, please request a certified print.

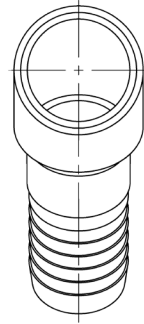
EBB Prefab Barb to 45° Elbow

Terminate your Sch. 40 pipe run with a professionally made barb

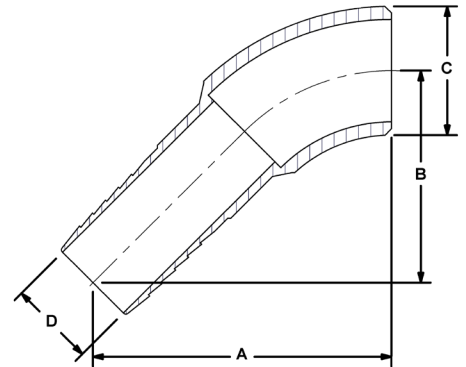


The EBB is a ready to use 45° elbow terminated with a genuine DMIC hose barb. This adapter was developed in response to customer requests for an easy way to terminate Sch. 40 pipe runs with a hose barb. Also offered in **BBE 90°** version: See pg. 15

- Standards based radius and hose barb saves time and money compared to in-house fabrication.
- Repeatable results every time.
- Available in Stainless Steel.
- Available step size barb preserves nominal ID in barb.
- Suction to 400 PSI.



EBB		Prefab Barb to 45° Elbow			
Port Codes	Port Size	Dimensions IN			
		A	B	C	D
HB HM WB4	¾"	2.83	2.08	1.05	0.63
	1"	3.05	2.17	1.31	0.88
	1¼"	3.65	2.65	1.66	1.00
	1½"	3.86	2.74	1.91	1.28
	2"	4.61	3.23	2.38	1.75
	2½"	5.64	3.89	2.88	2.25
	3"	6.42	4.42	3.50	2.75
	4"	7.63	5.13	4.50	3.75



Ordering Codes

EBB		**		HB		**		WB4		1		1		Null	
												Code	Description		
												This code is always "1"			
First Size Code				Hose Barb Side				Second Size Code				Sch.40 Butt Weld		Adapter Material	
Code	Port Size	Code	Description	Code	Port Size	Code	Description	Code	Description	Code	Description				
07	3/4"	HB	Inch Barb (Standard)	07	3/4"	WB4	Butt Weld Pipe	1	Low Carbon Steel						
10	1"	HM	Metric Barb	10	1"			2	Stainless Steel						
12	1 1/4"			12	1 1/4"										
15	1 1/2"			15	1 1/2"										
20	2"			20	2"										
25	2 1/2"			25	2 1/2"										
30	3"			30	3"										
40	4"			40	4"										
50	5" - Call			50	5" - Call										
60	6" - Call			60	6" - Call										

Choose Adapter Size
Replace ** with the desired adapter size.
Two different size codes selects step size option.

Metric Hose Barb Connection
Adapters supplied in metric market locales use metric-barb IDs. Please call to confirm price and availability. Not available in U.S.A.

Choose Adapter Size

Replace ** with the desired adapter size.

Two different size codes selects step size option.

Metric Hose Barb Connection

Adapters supplied in metric market locales use metric-barb IDs. Please call to confirm price and availability. Not available in U.S.A.



SFM Split Head to Thread

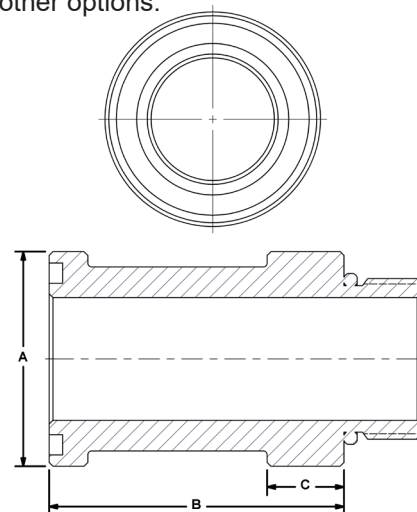
Convert SAE/BSP ports to Split Flange connection ~ 3/4" to 5"



The SFM converts a standard or expanded SAE/BSP port to Code 61 Split Flange Head. Ideal for emergency valve type conversions, and rigid mechanical mounting of valve to components.

- Works with standard SAE J518 split flanges up to BVAL working pressure (400 PSI).
- For full pressure service, select HSFM (Code 61) or HSFH (Code 62) see pages 18 or 19.
- Offered in SAE/BSP standard and expanded port sizes.
- Made in U.S.A.
- Suction to 400 PSI.
- Carbon Steel part number, see catalog F04 for other options.

SFM		C.61 Split Flange Head to Thread, Inline			
Port Codes	Port Size	Dimensions IN			Split Flange Kit (Carbon Steel)
		A	B	C	
SM S B	3/4"	1.50	2.44	0.63	FSL-0750SK
	1"	1.75	2.40	0.63	FSL-1000SK
	1 1/4"	2.00	2.72	0.63	FSL-1250SK
	1 1/2"	2.38	2.72	0.63	FSL-1500SK
	2"	2.81	2.97	0.63	FSL-2000SK
	2 1/2"	3.31	3.18	0.63	FSL-2500SK
	3"	4.00	3.18	0.75	FSL-3000SK
	4"	5.00	3.44	0.75	FSL-4000SK



Ordering Codes

SFM - ** SM - ** S - 4 1

O-Ring Elastomer	
Code	Description
1	Buna-N (standard)
2	Ethylene Propylene "EPR"
3	Viton

First Size Code	
Code	Port Size
07	3/4"
10	1"
12	1 1/4"
15	1 1/2"
20	2"
25	2 1/2"
30	3"
40	4"
50	5" - Call

Split Flange Side	
Code	Description
SM	C.61 Split Flange Head

Choose Adapter Size
Replace ** with the desired adapter size.
Two different size codes selects step size option.

Second Size Code	
Code	Port Size
07	3/4"
10	1"
12	1 1/4"
15	1 1/2"
20	2"
25	2 1/2"
30	3"
40	4"
50	5" - Call

Thread Side	
Code	Description
S	SAE-M ORB
B	BSPP-M

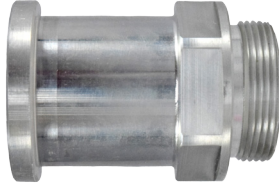
Alternate Thread Standard
Replace the "S" SAE ORB standard thread connection with a choice from the "Thread Side" table. Please call to confirm price and availability.

Adapter Material	
Code	Description
4	Aluminum



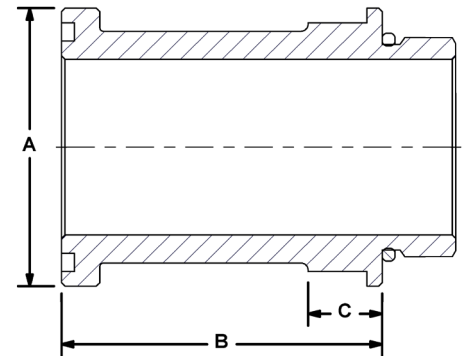
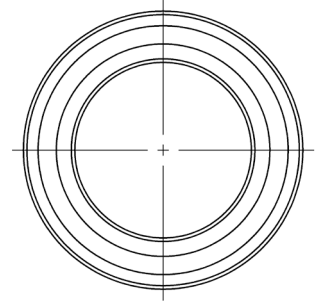
HSFM Split Head to Thread

C.61 SAE/BSP ports to Split Flange Connections



The HSFM converts a standard or expanded SAE/BSP port to Code 61 Split Flange Head. Ideal for emergency valve type conversions, and rigid mechanical mounting of valve to components.

- Offered in SAE/BSP standard and expanded port sizes.
- Made in U.S.A.
- Rated to J518 Full Pressure.
- Carbon Steel part number, see catalog F04 for other options.



HSFM		C.61 Split Flange Head to Thread, Inline			
Port Codes	Port Size	Dimensions IN			Split Flange Kit (Carbon Steel)
		A	B	C	
SM S B	¾"	1.50	2.44	0.63	FSL-0750SK
	1"	1.75	2.40	0.63	FSL-1000SK
	1¼"	2.00	2.72	0.63	FSL-1250SK
	1½"	2.38	2.72	0.63	FSL-1500SK
	2"	2.81	2.97	0.63	FSL-2000SK
	2½"	3.31	3.18	0.63	FSL-2500SK
	3"	4.00	3.18	0.75	FSL-3000SK
	4"	5.00	3.44	0.75	FSL-4000SK

Ordering Codes

HSFM

**

SM

**

S

1

1

First Size Code

Code	Port Size
07	¾"
10	1"
12	1¼"
15	1½"
20	2"
25	2½"
30	3"
40	4"
50	5" - Call

Split Flange Side

Code	Description
SM	C.61 Split Flange Head

Second Size Code

Code	Port Size
07	¾"
10	1"
12	1¼"
15	1½"
20	2"
25	2½"
30	3"
40	4"
50	5" - Call

Thread Side

Code	Description
S	SAE-M ORB
B	BSPP-M

Adapter Material

Code	Description
1	Carbon Steel (standard)
2	Stainless Steel

O-Ring Elastomer

Code	Description
1	Buna-N (standard)
2	Ethylene Propylene "EPR"
3	Viton

Alternate Thread Standard

Replace the "S" SAE ORB standard thread connection with a choice from the "Thread Side" table. Please call to confirm price and availability.

Choose Adapter Size

Replace ** with the desired adapter size.

Two different size codes selects step size option.

Alternate Thread Standard

Replace the "S" SAE ORB standard thread connection with a choice from the "Thread Side" table. Please call to confirm price and availability.



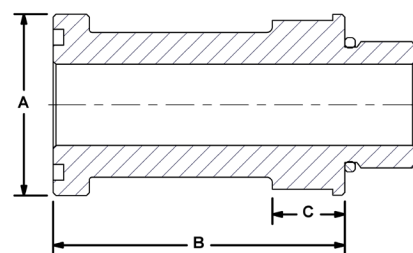
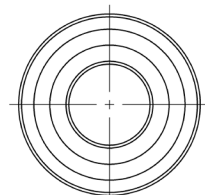
HSFH Split Head to Thread

C.62 SAE/BSP ports to Split Flange connection ~ 3/4" to 2"



The HSFH converts a SAE/BSP port to Code 62 Split Flange Head. Ideal for emergency valve type conversions, and rigid mechanical mounting of valve to components.

- Offered in SAE/BSP standard port sizes.
- Made in U.S.A.
- Rated to J518 Pressure.
- Carbon Steel part number, see catalog F04 for other options.



HSFH	C.62 Split Flange Head to Thread, Inline				
	Port Size	Dimensions IN			Split Flange Kit (Carbon Steel)
		A	B	C	
SH S B	3/4"	1.63	2.71	0.63	FSH-0750SK
	1"	1.88	3.02	0.75	FSH-1000SK
	1 1/4"	2.13	3.38	0.75	FSH-1250SK
	1 1/2"	2.5	3.77	0.75	FSH-1500SK
	2"	3.13	4.27	0.82	FSH-2000SK

Ordering Codes

HSFH

**

SH

**

S

1

1

First Size Code

Code	Port Size
07	¾"
10	1"
12	1¼"
15	1½"
20	2"

Split Flange Side

Code	Description
SH	C.62 Split Flange Head

Second Size Code

Code	Port Size
07	¾"
10	1"
12	1¼"
15	1½"
20	2"

Thread Side

Code	Description
S	SAE-M ORB
B	BSPP-M

Adapter Material

Code	Description
1	Carbon Steel (standard)
2	Stainless Steel

O-Ring Elastomer

Code	Description
1	Buna-N (standard)
2	Ethylene Propylene "EPR"
3	Viton

Choose Adapter Size

Replace ** with the desired adapter size.

Two different size codes selects step size option.

Alternate Thread Standard

Replace the "S" SAE ORB standard thread connection with a choice from the "Thread Side" table. Please call to confirm price and availability.



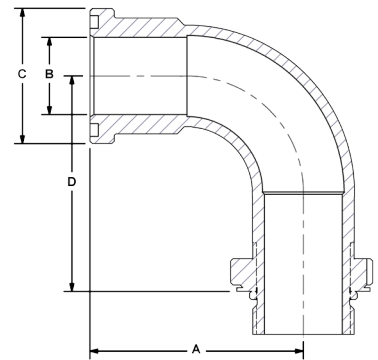
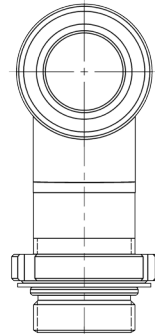
SSE Split Head to Thread 90°

Convert SAE/BSP ports to Split Flange connection ~ 3/4" to 5"



The SSE provides flexibility of design in O-Ring sealed power unit layout. Rigid mechanical mounting of suspended valves is made simple and repeatable.

- Standard and expanded SAE/BSP connections from 3/4" to 6" size.
- Engineered in tandem with DMIC BVAL valves, there is never a question of compatibility, tolerances, or fit.
- Step size versions and stainless steel available.
- Suction to 400 PSI.
- Made in U.S.A.
- Carbon Steel part number, see catalog F04 for other options.



SSE		C.61 Split Flange Head to Thread, 90° Elbow				
Port Codes	Port Size	Dimensions IN				Split Flange Kit Carbon Steel)
		A	B	C	D	
SM S B	3/4"	2.75	0.75	1.50	2.79	FSL-0750SK
	1"	2.75	1.00	1.75	2.78	FSL-1000SK
	1 1/4"	3.13	1.25	2.00	3.28	FSL-1250SK
	1 1/2"	3.50	1.50	2.38	3.68	FSL-1500SK
	2"	4.25	2.00	2.81	4.40	FSL-2000SK
	2 1/2"	5.50	2.50	3.31	5.21	FSL-2500SK
	3"	6.38	3.00	4.00	6.17	FSL-3000SK
	4"	7.75	4.00	5.00	7.67	FSL-4000SK

Ordering Codes

SSE - ** SM - ** S - 1 1

O-Ring Elastomer	
Code	Description
1	Buna-N (standard)
2	Ethylene Propylene "EPR"
3	Viton

First Size Code	
Code	Port Size
07	3/4"
10	1"
12	1 1/4"
15	1 1/2"
20	2"
25	2 1/2"
30	3"
40	4"
50	5" - Call

Split Flange Side	
Code	Description
SM	C.61 Split Flange Head

Choose Adapter Size
Replace ** with the desired adapter size.
Two different size codes selects step size option.

Second Size Code	
Code	Port Size
07	3/4"
10	1"
12	1 1/4"
15	1 1/2"
20	2"
25	2 1/2"
30	3"
40	4"
50	5" - Call

Thread Side	
Code	Description
S	Swivel SAE-M ORB
B	Swivel BSPP-M

Alternate Thread Standard
Replace the "S" SAE ORB standard thread connection with a choice from the "Thread Side" table. Please call to confirm price and availability.

Adapter Material	
Code	Description
1	Low Carbon Steel
2	Stainless Steel



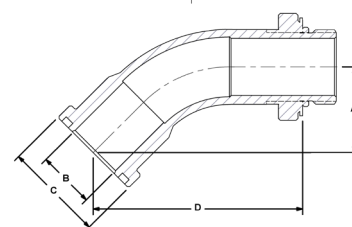
ESS Split Head to Thread 45°

Convert SAE/BSP ports to Split Flange connection ~ 3/4" to 6"



The 45° ESS compliments the design flexibility introduced by SSE (page 20). Rigid mechanical mounting of suspended valves is made simple and repeatable.

- Standard and expanded SAE/BSP connections from 3/4" to 6" size
- Engineered in tandem with DMIC BVAL valves, there is never a question of compatibility, tolerances, or fit.
- Step size versions and stainless steel available.
- Suction to 400 PSI.
- Made in U.S.A.
- Carbon Steel part number, see catalog F04 for other options.



ESS		C.61 Split Flange Head to Thread, 45° Elbow				
Port Codes	Port Size	Dimensions IN				Split Flange Kit (Carbon Steel)
		A	B	C	D	
SM S B	3/4"	1.41	0.75	1.50	3.45	FSL-0750SK
	1"	1.51	1.00	1.75	3.66	FSL-1000SK
	1 1/4"	1.59	1.25	2.00	4.00	FSL-1250SK
	1 1/2"	1.68	1.50	2.38	4.20	FSL-1500SK
	2"	1.86	2.00	2.81	4.64	FSL-2000SK
	2 1/2"	2.48	2.50	3.31	5.68	FSL-2500SK
	3"	2.74	3.00	4.00	6.39	FSL-3000SK
	4"	3.00	4.00	5.00	7.16	FSL-4000SK

Ordering Codes

ESS

**

SM

**

S

1

1

First Size Code

Code	Port Size
07	¾"
10	1"
12	1¼"
15	1½"
20	2"
25	2½"
30	3"
40	4"
50	5" - Call

Split Flange Side

Code	Description
SM	C.61 Split Flange Head

Second Size Code

Code	Port Size
07	¾"
10	1"
12	1¼"
15	1½"
20	2"
25	2½"
30	3"
40	4"
50	5" - Call

Thread Side

Code	Description
S	Swivel SAE-M ORB
B	Swivel BSPP-M

Adapter Material

Code	Description
1	Low Carbon Steel
2	Stainless Steel

Choose Adapter Size

Replace ** with the desired adapter size.

Two different size codes selects step size option.

Alternate Thread Standard

Replace the "S" SAE ORB standard thread connection with a choice from the "Thread Side" table. Please call to confirm price and availability.

O-Ring Elastomer

Code	Description
1	Buna-N (standard)
2	Ethylene Propylene "EPR"
3	Viton

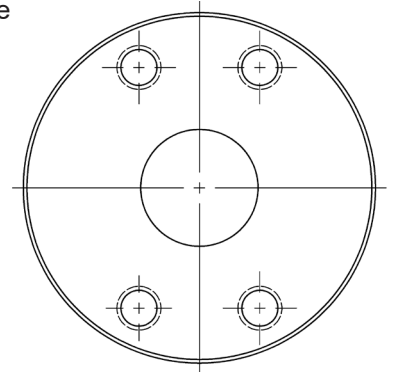
FMC SAE 4B Companion to Thread

Convert low pressure SAE/BSP thrd to SAE 4-Bolt UNC/Metric

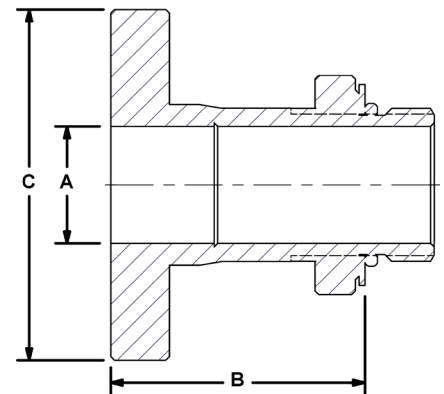


The FMC converts a standard or extended thread port to SAE 4-Bolt Companion connection. Useful for emergency valve conversion up to 400 PSI. Available with metric bolt holes and step size flange options.

- Fast and economical conversion to SAE 4-Bolt Companion, UNC (standard) or Metric Bolts.
- Reliable mechanical base for your SAE C.61 Split Flange terminated pipe or hose.
- Swivel permits proper bolt hole orientation.
- Suction to 400 PSI.



FMC		C.61 4B Companion to Thread, Inline		
Port Codes	Port Size	Dimensions IN		
		A	B	C
FM GM AA S B	¾"	0.75	2.16	2.75
	1"	1.00	2.16	3.00
	1¼"	1.25	2.28	3.38
	1½"	1.50	2.24	3.75
	2"	2.00	2.29	4.25
	2½"	2.50	2.47	4.75
	3"	3.00	2.65	5.75
	4"	4.00	2.67	7.00



Ordering Codes

FMC - ** FM - ** S - 1 1

O-Ring Elastomer	
Code	Description
1	Buna-N (standard)
2	Ethylene Propylene "EPR"
3	Viton

First Size Code	
Code	Port Size
07	¾"
10	1"
12	1¼"
15	1½"
20	2"
25	2½"
30	3"
40	4"
50	5" - Call
60	6" - Call

Split Flange Side	
Code	Description
FM	C.61 4B UNC (U.S. Std)
GM	C.61 4B Metric Bolts
AA	ANSI 150 #

Choose Adapter Size

Replace ** with the desired adapter size.

Two different size codes selects step size option.

Second Size Code	
Code	Port Size
07	¾"
10	1"
12	1¼"
15	1½"
20	2"
25	2½"
30	3"
40	4"
50	5" - Call
60	6" - Call

Thread Side	
Code	Description
S	SAE ORB
B	BSPP

Alternate Fastener Standard

Replace the "FM" C.61 UNC-Bolts Companion code with "GM" C.61 Metric Bolts Companion for metric market applications. Please call to confirm price and availability.

Alternate Thread Standard

Replace the "S" SAE ORB standard thread connection with a choice from the "Thread Side" table. Please call to confirm price and availability.

Adapter Material	
Code	Description
1	Low Carbon Steel
2	Stainless Steel



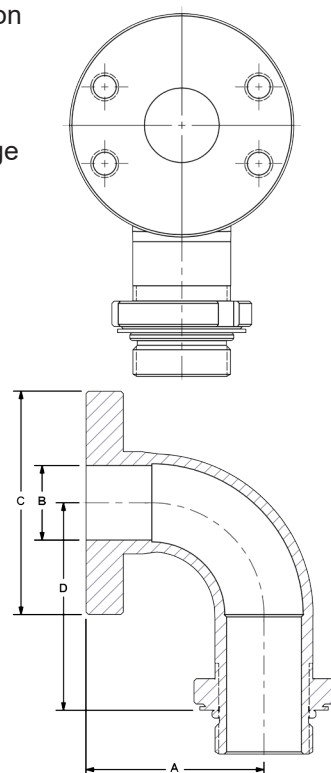
SFC SAE 4B Companion to Thread 90°

The versatility of **FMC** with an integrated right angle fluid path



The SFC converts a standard or extended thread port to SAE 4-Bolt Companion connection with properly radiused 90 degree bend, aiding laminar flow through the fluid direction change. Available in stainless steel.

- Fast and economical conversion to SAE 4-Bolt Companion, UNC (standard) or Metric Bolts.
- Reliable mechanical base for your SAE C.61 Split Flange terminated pipe or hose.
- Swivel permits proper flange alignment.
- Suction to 400 PSI.



SFC	C.61 4B Companion to Thread, 90° Elbow				
	Port Size	Dimensions IN			
Port Codes		A	B	C	D
FM GM AA S B	¾"	2.38	0.75	2.75	2.79
	1"	2.38	1.00	3.00	2.79
	1¼"	2.76	1.25	3.38	3.28
	1½"	3.13	1.50	3.75	3.65
	2"	3.88	2.00	4.25	4.40
	2½"	4.75	2.50	4.75	5.21
	3"	5.50	3.00	5.75	6.17
	4"	7.00	4.00	7.00	7.67

Ordering Codes

SFC - ** FM - ** S - 1 1

O-Ring Elastomer	
Code	Description
1	Buna-N (standard)
2	Ethylene Propylene "EPR"
3	Viton

First Size Code	
Code	Port Size
07	¾"
10	1"
12	1¼"
15	1½"
20	2"
25	2½"
30	3"
40	4"
50	5" - Call
60	6" - Call

Split Flange Side	
Code	Description
FM	C.61 4B UNC (US Std)
GM	C.61 4B Metric Bolts
AA	ANSI 150 #

Choose Adapter Size

Replace ** with the desired adapter size.

Two different size codes selects step size option.

Second Size Code	
Code	Port Size
07	¾"
10	1"
12	1¼"
15	1½"
20	2"
25	2½"
30	3"
40	4"
50	5" - Call
60	6" - Call

Thread Side	
Code	Description
S	SAE ORB (Standard)
B	BSPP

Alternate Fastener Standard

Replace the "FM" C.61 UNC-Bolts Companion code with "GM" C.61 Metric Bolts Companion for metric market applications. Please call to confirm price and availability.

Alternate Thread Standard

Replace the "S" SAE ORB standard thread connection with a choice from the "Thread Side" table. Please call to confirm price and availability.

Adapter Material	
Code	Description
1	Low Carbon Steel
2	Stainless Steel

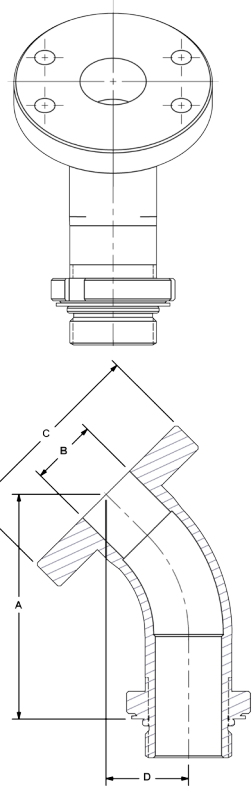
ESC SAE 4B Companion to Thread 45°

The exact adapter you need when space is tight ~ SAE/BSP



The ESC is the 45 degree compliment to FMC and SFC, converting standard/extended threaded ports to SAE 4-Bolt Companion connection. Rigid mechanical characteristics and dimensional repeatability are simplified.

- Fast and economical conversion to SAE 4-Bolt Companion, UNC (standard) or Metric Bolts.
- Reliable mechanical base for your SAE C.61 flange terminated pipe or hose.
- Swivel permits proper flange alignment.
- Suction to 400 PSI.



ESC		C.61 4B Companion to Thread, 45° Elbow			
Port Codes	Port Size	Dimensions IN			
		A	B	C	D
FM GM AA S B	¾"	3.19	0.75	2.75	1.15
	1"	3.40	1.00	3.00	1.25
	1¼"	3.73	1.25	3.38	1.33
	1½"	3.93	1.50	3.75	1.41
	2"	4.37	2.00	4.25	1.60
	2½"	5.15	2.50	4.75	1.95
	3"	5.77	3.00	5.75	2.12
	4"	6.63	4.00	7.00	2.48

Ordering Codes

ESC - ** FM - ** S - 1 1

O-Ring Elastomer	
Code	Description
1	Buna-N (standard)
2	Ethylene Propylene "EPR"
3	Viton

First Size Code	
Code	Port Size
07	¾"
10	1"
12	1¼"
15	1½"
20	2"
25	2½"
30	3"
40	4"
50	5" - Call
60	6" - Call

Split Flange Side	
Code	Description
FM	C.61 4B UNC (U.S. Std)
GM	C.61 4B Metric Bolts
AA	ANSI 150 #

Choose Adapter Size
Replace ** with the desired adapter size.
Two different size codes selects step size option.

Second Size Code	
Code	Port Size
07	¾"
10	1"
12	1¼"
15	1½"
20	2"
25	2½"
30	3"
40	4"
50	5" - Call
60	6" - Call

Thread Side	
Code	Description
S	SAE ORB (Standard)
B	BSPP

Alternate Fastener Standard

Replace the "FM" C.61 UNC-Bolts Companion code with "GM" C.61 Metric Bolts Companion for metric market applications. Please call to confirm price and availability.

Alternate Thread Standard

Replace the "S" SAE ORB standard thread connection with a choice from the "Thread Side" table. Please call to confirm price and availability.

Adapter Material	
Code	Description
1	Low Carbon Steel
2	Stainless Steel



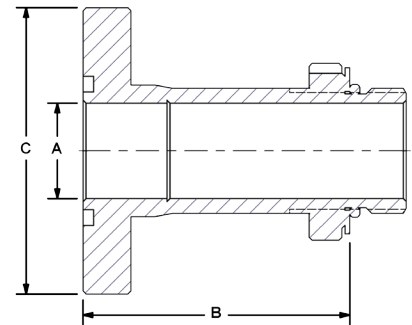
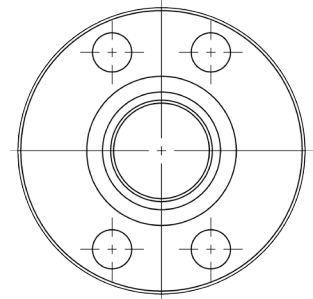
FMM SAE 4B Standard to Thread

Convert low pressure SAE/BSP thrd to SAE 4-Bolt standard pad



The FMM standard flange is adapted from the FMC (page 22), but features through bolt-holes and O-Ring groove for a "standard" flange configuration.

- Compatible with UNC and metric bolts.
- Fast and economical conversion to SAE 4-Bolt standard flange.
- Reliable mechanical base for your SAE C.61 Split Flange terminated pipe or hose.
- Swivel permits proper bolt hole orientation.
- Made in U.S.A.
- Suction to 400 PSI.



FMM	C.61 4B Standard to Thread, Inline				
	Port Size	Dimensions IN			
Port Codes		A	B	C	Lbs
FL AA S B	¾"	0.75	2.79	2.75	1.10
	1"	1.00	2.79	3.00	1.40
	1¼"	1.25	2.91	3.38	1.80
	1½"	1.50	2.80	3.75	2.30
	2"	2.00	3.16	4.25	3.30
	2½"	2.50	3.34	4.75	4.70
	3"	3.00	3.92	5.75	6.70
	4"	4.00	3.92	7.00	9.00

Ordering Codes

FMM - **		FL - **		S - 1 1		O-Ring Elastomer	
						Code	Description
						1	Buna-N (standard)
						2	Ethylene Propylene "EPR"
						3	Viton
						Adapter Material	
						Code	Description
						1	Low Carbon Steel
						2	Stainless Steel
						Thread Side	
						Code	Description
						S	SAE ORB (Standard)
						B	BSPP
						Split Flange Side	
						Code	Description
						FL	C.61 4B Std. Universal
						AA	ANSI 150 #
						First Size Code	
						Code	Port Size
						07	¾"
						10	1"
						12	1¼"
						15	1½"
						20	2"
						25	2½"
						30	3"
						40	4"
						50	5" - Call
						60	6" - Call
						Second Size Code	
						Code	Port Size
						07	¾"
						10	1"
						12	1¼"
						15	1½"
						20	2"
						25	2½"
						30	3"
						40	4"
						50	5" - Call
						60	6" - Call

Choose Adapter Size

Replace ** with the desired adapter size.

Two different size codes selects step size option.

Universal Bolt Holes

The SAE 4-Bolt standard pad is drilled nominally oversize to permit the use of UNC or Metric bolts.

Alternate Thread Standard

Replace the "S" SAE ORB standard thread connection with a choice from the "Thread Side" table. Please call to confirm price and availability.



www.dmic.com
DMIC Flange Catalog
Copyright ©2022 Delaware Mfg.

SSW-2207
Page 25

Call Toll Free 1-800-248-3642
In Canada 1-800-320-3642

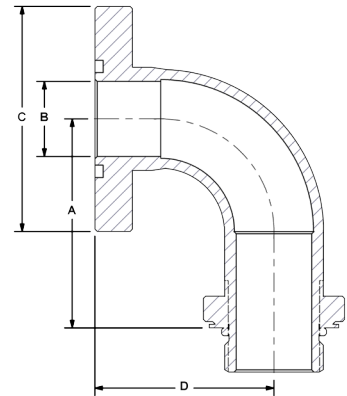
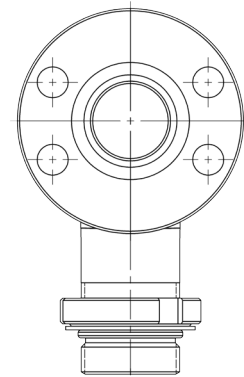
SFE SAE 4B Standard to Thread 90°

Convert low pressure SAE/BSP thrd to SAE 4-Bolt standard pad



The SFE converts standard/extended threaded ports to SAE 4-Bolt Standard connection with properly radiused 90 degree bend, aiding laminar flow through the fluid direction change. Available in Stainless Steel.

- Fast and economical conversion to SAE 4-Bolt standard, its UNC (imperial) and Metric Bolts.
- Reliable mechanical base for your SAE C.61 Split Flange terminated pipe or hose.
- Swivel permits proper adapter orientation.
- Suction to 400 PSI.



SFE		C.61 4B Standard to SAE/ BSP Thread 90°				
		Port Size	Dimensions IN			
Port Codes			A	B	C	D
FL AA S B		¾"	2.79	0.75	2.75	2.38
		1"	2.79	1.00	3.00	2.38
		1¼"	3.28	1.25	3.38	2.76
		1½"	3.65	1.50	3.75	3.13
		2"	4.40	2.00	4.25	3.88
		2½"	5.21	2.50	4.75	4.75
		3"	6.17	3.00	5.75	5.50
		4"	7.67	4.00	7.00	7.00

Ordering Codes

SFE - ** FL - ** S - 1 1

O-Ring Elastomer	
Code	Description
1	Buna-N (standard)
2	Ethylene Propylene "EPR"
3	Viton

First Size Code	
Code	Port Size
07	¾"
10	1"
12	1¼"
15	1½"
20	2"
25	2½"
30	3"
40	4"
50	5" - Call
60	6" - Call

Split Flange Side	
Code	Description
FL	C.61 4B Std. Universal
AA	ANSI 150 #

Choose Adapter Size
Replace ** with the desired adapter size.
Two different size codes selects step size option.

Second Size Code	
Code	Port Size
07	¾"
10	1"
12	1¼"
15	1½"
20	2"
25	2½"
30	3"
40	4"
50	5" - Call
60	6" - Call

Thread Side	
Code	Description
S	SAE ORB (Standard)
B	BSPP

Universal Bolt Holes

The SAE 4-Bolt standard pad is drilled nominally oversize to permit the use of UNC or Metric bolts.

Alternate Thread Standard

Replace the "S" SAE ORB standard thread connection with a choice from the "Thread Side" table. Please call to confirm price and availability.

Adapter Material	
Code	Description
1	Low Carbon Steel
2	Stainless Steel



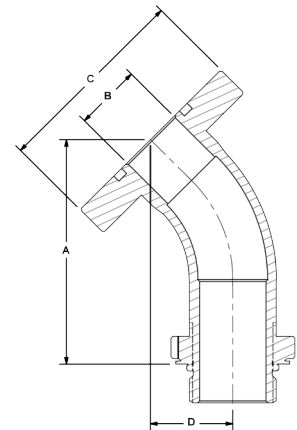
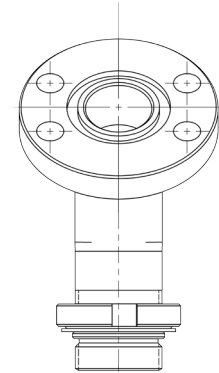
ESF SAE 4B Standard to Thread 45°

Convert low pressure SAE/BSP thrd to SAE 4-Bolt standard pad



The ESF converts standard/extended threaded ports to SAE 4-Bolt Standard connection. Properly radiused 45 degree bend, aiding laminar flow through the fluid direction change. Available in Stainless Steel.

- Fast and economical conversion to SAE 4-Bolt standard, UNC (standard) or Metric Bolts.
- Reliable mechanical base for your SAE C.61 Split Flange terminated pipe or hose.
- Swivel permits proper flange alignment.
- Made in U.S.A., fast delivery of step-size and S/S models.
- Suction to 400 PSI.



ESF		C.61 4B Standard to SAE/ BSP Thread 45°			
Port Codes	Port Size	Dimensions IN			
		A	B	C	D
FL AA S B	¾"	3.19	0.75	2.75	1.15
	1"	3.40	1.00	3.00	1.25
	1¼"	3.73	1.25	3.38	1.33
	1½"	3.93	1.50	3.75	1.41
	2"	4.37	2.00	4.25	1.60
	2½"	5.15	2.50	4.75	1.95
	3"	5.77	3.00	5.75	2.12
	4"	6.63	4.00	7.00	2.48

Ordering Codes

ESF - ** FL - ** S - 1 1

O-Ring Elastomer	
Code	Description
1	Buna-N (standard)
2	Ethylene Propylene "EPR"
3	Viton

First Size Code	
Code	Port Size
07	¾"
10	1"
12	1¼"
15	1½"
20	2"
25	2½"
30	3"
40	4"
50	5" - Call
60	6" - Call

Split Flange Side	
Code	Description
FL	C.61 4B Std. Universal
AA	ANSI 150 #

Choose Adapter Size
Replace ** with the
desired adapter size.
Two different size codes
selects step size option.

Second Size Code	
Code	Port Size
07	¾"
10	1"
12	1¼"
15	1½"
20	2"
25	2½"
30	3"
40	4"
50	5" - Call
60	6" - Call

Thread Side	
Code	Description
S	SAE ORB (Standard)
B	BSPP

Universal Bolt Holes

The SAE 4-Bolt standard pad is drilled nominally oversize to permit the use of UNC or Metric bolts.

Alternate Thread Standard

Replace the "S" SAE ORB standard thread connection with a choice from the "Thread Side" table. Please call to confirm price and availability.

Adapter Material	
Code	Description
1	Low Carbon Steel
2	Stainless Steel



www.dmic.com
DMIC Flange Catalog
Copyright ©2022 Delaware Mfg.

Due to our policy of continual product improvement, the specifications in this catalog may change without notice. When designing by spec, please request a certified print.

SSW-2207
Page 27

Call Toll Free 1-800-248-3642
In Canada 1-800-320-3642

SNS Int-Ext Thread Simplifier

Three-in-one adapter for leak free reservoir to thread/socket weld

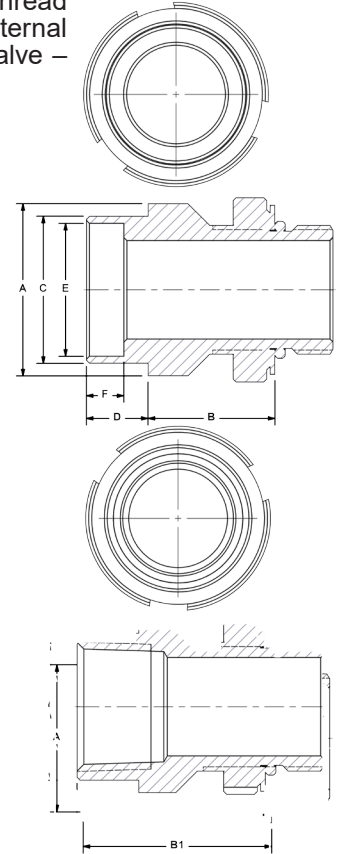


The SNS is an ideal solution for the production power unit builder. Weld the SNS below fluid level to your reservoir. An internal thread or Sch.40 socket allows mounting of strainer or baffle pipe. External SAE/BSP swivel thread permits perfect alignment of shutoff valve – it's a win-win solution for speed and quality.

- Built-in pilot simplifies alignment to reservoir *.
- Standard and expanded SAE/BSP ports.
- Choice of thread or socket weld internal connection.
- Available in Stainless Steel and special sealing.
- Suction to 400 PSI.

* NOTE: There is "NO" pilot on a Female SAE connection - "C"

SNS		Suction Line Simplifier, Inline w/Internal Thread						
Port Code	Port Size	Dimensions IN						
		A	B	B1	C	D	E (W4 Only)	F (W4 Only)
N S W4 B	¾"	1.50	1.16	1.79	1.25	0.63	1.09	0.38
	1"	1.75	1.28	1.91	1.50	0.63	1.35	0.38
	1¼"	2.13	1.41	2.16	1.88	0.75	1.70	0.50
	1½"	2.38	1.53	2.29	2.13	0.75	1.95	0.50
	2"	2.88	1.53	2.41	2.63	0.88	2.41	0.63
	2½"	3.50	1.59	2.59	3.25	1.00	2.91	0.75
	3"	4.25	1.66	2.67	4.00	1.00	3.54	0.75
	4"	5.25	1.66	2.67	5.00	1.00	4.54	0.75



Ordering Codes

SNS - ** N - ** S - 1 1

O-Ring Elastomer	
Code	Description
1	Buna-N (standard)
2	Ethylene Propylene "EPR"
3	Viton

First Size Code	
Code	Port Size
07	¾"
10	1"
12	1¼"
15	1½"
20	2"
25	2½"
30	3"
40	4"
50	5" - Call
60	6" - Call

Internal Conn - F	
Code	Description
N	NPT-F (standard)
S	SAE-F ORB
W4	Sch. 40 Socket Weld
B	BSPP-F

Choose Adapter Size
Replace ** with the desired adapter size.
Two different size codes selects step size option.

Second Size Code	
Code	Port Size
07	¾"
10	1"
12	1¼"
15	1½"
20	2"
25	2½"
30	3"
40	4"
50	5" - Call
60	6" - Call

External Thread - M	
Code	Description
S	Swivel SAE-M ORB
B	Swivel BSPP-M

Adapter Material	
Code	Description
1	Low Carbon Steel
2	Stainless Steel

Alternate Internal Connection (Old SWS type)

Replace the "N" NPT-F standard internal connection with a Sch. 40 Socket Weld or other option from the "Internal Conn-F" table.

Alternate External Thread Standard

Replace the "S" SAE-M standard thread connection with a choice from the "External Thread-M" table. Please call to confirm price and availability.



www.dmic.com
DMIC Flange Catalog
Copyright ©2022 Delaware Mfg.

Due to our policy of continual product improvement, the specifications in this catalog may change without notice. When designing by spec, please request a certified print.

SSW-2207
Page 28

Call Toll Free 1-800-248-3642
In Canada 1-800-320-3642

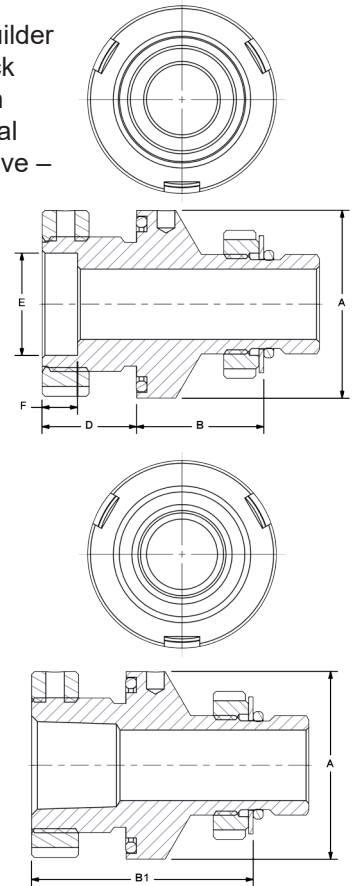
NWSNS Simplifier

NWSNS - No Weld Int-Ext Threaded Simplifier



The NWSNS is an ideal solution for the production power unit builder when welding is not available. The NWSNS is secured with a lock ring featuring an O-Ring that seals against the reservoir wall. An internal thread allows mounting of strainer or baffle pipe. External SAE/BSPP swivel thread permits perfect alignment of shutoff valve – it's a win-win solution for speed and quality.

- No Weld design – Sealing against reservoir wall with choice of O-Ring material for fluid compatibility.
- Standard and expanded SAE/BSPP ports.
- Choice of thread for internal connection.
- Available in Stainless Steel and special sealing.
- Suction to 400 PSI.



NWSNS		Suction Line Simplifier, Inline w/Internal Thread						
Port Code	Port Size	Pilot Dia.	Dimensions IN					
			A	B	B1	D	E	F
B N S W4	3/4"	1 1/16"	2.00	1.35	2.35	1.00	1.09	0.38
	1"	1 3/4"	2.25	1.35	2.35	1.00	1.35	0.38
	1 1/4"	1 5/8"	2.62	1.41	2.41	1.00	1.69	0.50
	1 1/2"	2 3/8"	2.88	1.50	2.50	1.00	1.95	0.50
	2"	2 7/8"	3.38	1.50	2.50	1.00	2.41	0.63
	2 1/2"	3 1/2"	4.00	1.60	2.60	1.00	2.91	0.75
	3"	4"	4.50	1.54	2.54	1.00	3.54	0.75

Ordering Codes

NWSNS - ** N - ** S - 1 1

O-Ring Elastomer	
Code	Description
1	Buna-N (standard)
2	Ethylene Propylene "EPR"
3	Viton

First Size Code

Code	Port Size
07	3/4"
10	1"
12	1 1/4"
15	1 1/2"
20	2"
25	2 1/2"
30	3"
40	4" - Call
50	5" - Call
60	6" - Call

Internal Conn - F

Code	Description
N	NPT-F (standard)
S	SAE-F ORB
W4	Sch. 40 Socket Weld
B	BSPP-F

Choose Adapter Size

Replace ** with the desired adapter size.

Two different size codes selects step size option.

Second Size Code

Code	Port Size
07	3/4"
10	1"
12	1 1/4"
15	1 1/2"
20	2"
25	2 1/2"
30	3"
40	4" - Call
50	5" - Call
60	6" - Call

External Thread - M

Code	Description
S	Swivel SAE-M ORB
B	Swivel BSPP-M

Adapter Material

Code	Description
1	Low Carbon Steel
2	Stainless Steel

Alternate Internal Connection (Old SWS type)

Replace the "N" NPT-F standard internal connection with a Sch. 40 Socket Weld or other option from the "Internal Conn-F" table.

Alternate External Thread Standard

Replace the "S" SAE-M standard thread connection with a choice from the "External Thread-M" table. Please call to confirm price and availability.



SNE Int-Ext Thread Simplifier 90°

Three-in-one swivel elbow from reservoir to thread/socket weld

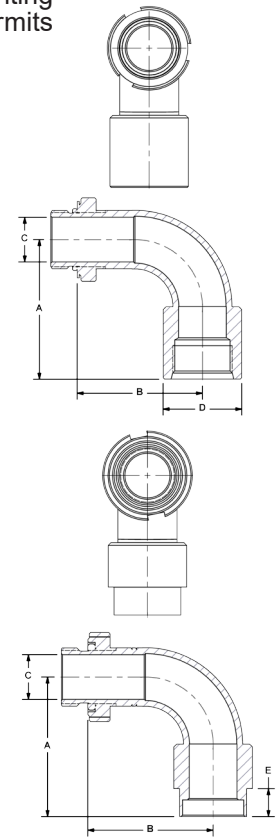


The SNE is ideal for placement of inlet valves in mechanically rigid flooded suction positions. Internal thread/socket weld allows mounting of strainer or baffle pipe. External thread with swivel feature permits perfect alignment of shutoff valve.

- Built-in pilot simplifies alignment to reservoir *
- Standard and expanded SAE/BSP ports.
- Choice of thread or socket weld internal connection.
- Available in Stainless Steel and special sealine.
- Suction to 400 PSI.

* NOTE: There is "NO" pilot on a Female SAE connection - "D"

SNE		Suction Line Simplifier, 90° Elbow, w/Internal Thread					
Port Code	Port Size	Dimensions IN					
		A	B	C	D	E	F
N S W4 B	¾"	2.50	2.78	0.75	1.25	0.63	1.00
	1"	2.50	2.75	1.00	1.50	0.63	1.20
	1¼"	3.01	3.28	1.25	1.87	0.75	1.90
	1½"	3.38	3.68	1.50	2.12	0.75	2.40
	2"	4.13	4.38	2.00	2.62	0.88	3.90
	2½"	5.38	5.19	2.50	3.25	1.00	7.40
	3"	6.00	6.13	3.00	4.00	1.00	11.80
	4"	8.00	7.69	4.00	5.00	1.00	19.00



Ordering Codes

SNE - ****** **N** - ****** **S** - **1** **1**

First Size Code	
Code	Port Size
07	¾"
10	1"
12	1¼"
15	1½"
20	2"
25	2½"
30	3"
40	4"
50	5" - Call
60	6" - Call

Internal Conn - F	
Code	Description
N	NPT-F (standard)
S	SAE-F ORB
W4	Sch. 40 Socket Weld
B	BSPP-F

Choose Adapter Size

Replace ** with the desired adapter size.

Two different size codes selects step size option.

Second Size Code	
Code	Port Size
07	¾"
10	1"
12	1¼"
15	1½"
20	2"
25	2½"
30	3"
40	4"
50	5" - Call
60	6" - Call

External Thread - M	
Code	Description
S	Swivel SAE-M ORB
B	Swivel BSPP-M

Alternate Internal Connection (Old SWE type)

Replace the "N" NPT-F standard internal connection with a Sch. 40 Socket Weld or other option from the "Internal Conn-F" table.

Alternate External Thread Standard

Replace the "S" SAE-M standard thread connection with a choice from the "External Thread-M" table. Please call to confirm price and availability.

O-Ring Elastomer	
Code	Description
1	Buna-N (standard)
2	Ethylene Propylene "EPR"
3	Viton

Adapter Material	
Code	Description
1	Low Carbon Steel
2	Stainless Steel



www.dmic.com
DMIC Flange Catalog
Copyright ©2022 Delaware Mfg.

Due to our policy of continual product improvement, the specifications in this catalog may change without notice. When designing by spec, please request a certified print.

SSW-2207
Page 30

Call Toll Free 1-800-248-3642
In Canada 1-800-320-3642

ESN Int-Ext Thread Simplifier 45°

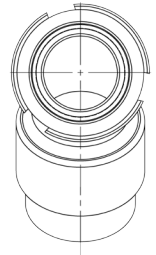
Three-in-one swivel elbow from reservoir to thread/socket weld



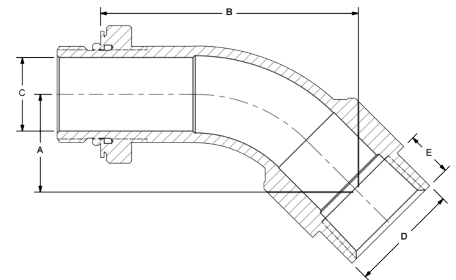
The ESN is ideal for placement of inlet valves in mechanically rigid flooded suction positions which are repeatable across power units. Internal thread/socket weld allows mounting of strainer or baffle pipe. External thread with swivel feature permits perfect alignment of shutoff valve.

- Built-in pilot simplifies alignment to reservoir *.
- Standard and expanded SAE/BSP ports.
- Choice of thread or socket weld internal connection.
- Available in Stainless Steel and special sealing.
- Suction to 400 PSI.

* NOTE: There is "NO" pilot on a Female SAE connection - "D"



ESN	Suction Line Simplifier, 45° Elbow, w/Internal Thread					
	Port Size	Dimensions IN				
Port Codes		A	B	C	D	E
N S W4 B	¾"	1.24	3.27	0.75	1.25	0.63
	1"	1.33	3.49	1.00	1.50	0.63
	1¼"	1.50	3.90	1.25	1.87	0.75
	1½"	1.59	4.11	1.50	2.12	0.75
	2"	1.77	4.55	2.00	2.62	0.88
	2½"	2.39	5.59	2.50	3.25	1.00
	3"	2.47	6.13	3.00	4.00	1.00
	4"	3.18	7.33	4.00	5.00	1.00



Ordering Codes

ESN - ** N - ** S - 1 1

O-Ring Elastomer	
Code	Description
1	Buna-N (standard)
2	Ethylene Propylene "EPR"
3	Viton

First Size Code	
Code	Port Size
07	¾"
10	1"
12	1¼"
15	1½"
20	2"
25	2½"
30	3"
40	4"
50	5" - Call
60	6" - Call

Internal Conn - F	
Code	Description
N	NPT-F (standard)
S	SAE-F ORB
W4	Sch. 40 Socket Weld
B	BSPP-F

Choose Adapter Size

Replace ** with the desired adapter size.

Two different size codes selects step size option.

Second Size Code	
Code	Port Size
07	¾"
10	1"
12	1¼"
15	1½"
20	2"
25	2½"
30	3"
40	4"
50	5" - Call
60	6" - Call

External Thread - M	
Code	Description
S	Swivel SAE-M ORB
B	Swivel BSPP-M

Adapter Material	
Code	Description
1	Low Carbon Steel
2	Stainless Steel

Alternate Internal Connection (Old ESW type)

Replace the "N" NPT-F standard internal connection with a Sch. 40 Socket Weld or other option from the "Internal Conn-F" table.

Alternate External Thread Standard

Replace the "S" SAE-M standard thread connection with a choice from the "External Thread-M" table. Please call to confirm price and availability.



www.dmic.com
DMIC Flange Catalog
Copyright ©2022 Delaware Mfg.

SSW-2207
Page 31

Call Toll Free 1-800-248-3642
In Canada 1-800-320-3642

CSN Downline Adapter w/Pilot

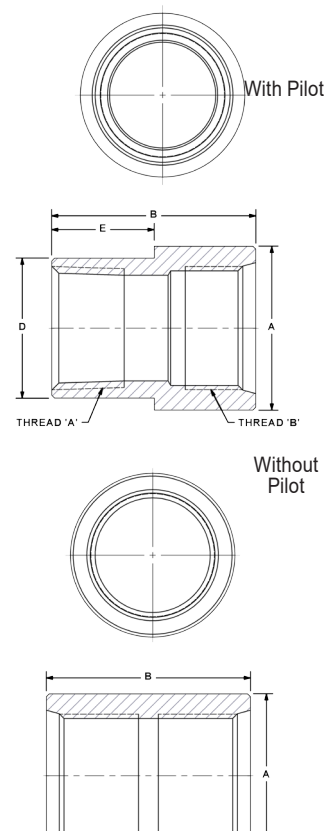
Facilitates return lines to reservoir ~ Sizes from 3/8" to 2"



The CSN is the downline coupling with a difference - DMIC's original design with pilot facilitates tidy welding to the reservoir. CSN adapters are offered to ease the transition for new power unit builders.

- Standard pilot for square placement on reservoir*.
- EZ-Weld material.
- Made in U.S.A. rapid delivery.
- Suction to 400 PSI.

* NOTE: There is "NO" pilot on a Female SAE



CSN	SAE Downline Dual Thread with Pilot				
	Port Size	Dimensions IN			
Port Codes		A	B	D	E
N S W4 B	3/8"	0.94	1.41	0.81	0.71
	1/2"	1.13	1.72	1.00	0.86
	3/4"	1.50	1.98	1.25	0.99
	1"	1.75	2.17	1.50	1.09
	1 1/4"	2.13	2.25	1.87	1.13
	1 1/2"	2.38	2.26	2.12	1.13
	2"	3.00	2.41	2.62	1.21

Ordering Codes

CSN - ** N - ** S - 1 1

Null	
Code	Description
This code is always "1"	

First Size Code	
Code	Port Size
03	3/8"
05	1/2"
07	3/4"
10	1"
12	1 1/4"
15	1 1/2"
20	2"

Thread - A	
Code	Description
N	NPT-F (standard)
S	SAE-F ORB
W4	Sch. 40 Socket Weld
B	BSPP-F

Choose Adapter Size

Replace ** with the desired adapter size.

Two different size codes selects step size option.

Second Size Code	
Code	Port Size
03	3/8"
05	1/2"
07	3/4"
10	1"
12	1 1/4"
15	1 1/2"
20	2"

Thread - B	
Code	Description
S	SAE-F (standard)
W4	Sch. 40 Socket Weld
N	NPT-F

Alternate Thread "A" Selection

Replace the "N" NPT-F standard internal connection with a choice from the "Internal Thread-A" table. Please call to confirm price and availability.

Alternate Thread "B" Selection

Replace the "S" SAE-F standard thread connection with a choice from the "External Thread-B" table. Please call to confirm price and availability.

Adapter Material	
Code	Description
1	Low Carbon Steel
2	Stainless Steel



www.dmic.com
DMIC Flange Catalog
Copyright ©2022 Delaware Mfg.

SSW-2207
Page 32

Call Toll Free 1-800-248-3642
In Canada 1-800-320-3642

Due to our policy of continual product improvement, the specifications in this catalog may change without notice. When designing by spec, please request a certified print.

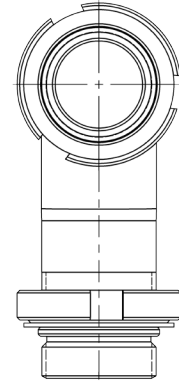
SVE 90° Swivel - Swivel

Male to Male adapter ~ ½ to 6" SAE/BSP

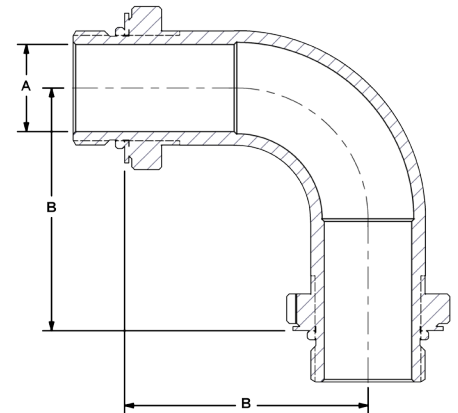


The SVE provides flexibility of design in O-Ring sealed power unit layout. Rigid mechanical mounting of suspended valves is made simple and repeatable.

- Standard and expanded SAE/BSP connections from ½ - 6" size.
- Engineered in tandem with DMIC BVAL valves.
- Made in USA for fast delivery and top quality.
- Jump Sizes available.
- Used to join dissimilar thread 90° types ex. SAE to BSPP.
- Suction to 400 PSI.



SVE	Swivel to Swivel		
	Port Size	Dimensions IN	
		A	B
S B	¾"	0.75	2.79
	1"	1.00	2.79
	1¼"	1.25	3.29
	1½"	1.50	3.66
	2"	2.00	4.41
	2½"	2.50	5.22
	3"	3.00	6.17
	4"	4.00	7.67



Ordering Codes

SVE - **		S - **		S - 1 1		O-Ring Elastomer	
						Code	Description
						1	Buna-N (standard)
						2	Ethylene Propylene "EPR"
						3	Viton
						Adapter Material	
						Code	Description
						1	Low Carbon Steel
						2	Stainless Steel
						External Thread - M	
						Code	Description
						S	Swivel SAE-M ORB
						B	Swivel BSPP-M
						External Thread - M	
						Code	Description
						S	Swivel SAE-M ORB
						B	Swivel BSPP-M
						First Size Code	
						Code	Port Size
						07	¾"
						10	1"
						12	1¼"
						15	1½"
						20	2"
						25	2½"
						30	3"
						40	4"
						50	5" - Call
						60	6" - Call
						Second Size Code	
						Code	Port Size
						07	¾"
						10	1"
						12	1¼"
						15	1½"
						20	2"
						25	2½"
						30	3"
						40	4"
						50	5" - Call
						60	6" - Call

Choose Adapter Size

Replace ** with the desired adapter size.

Two different size codes selects step size option.



www.dmic.com
DMIC Flange Catalog
Copyright ©2022 Delaware Mfg.

Due to our policy of continual product improvement, the specifications in this catalog may change without notice. When designing by spec, please request a certified print.

SSW-2207
Page 33

Call Toll Free 1-800-248-3642
In Canada 1-800-320-3642

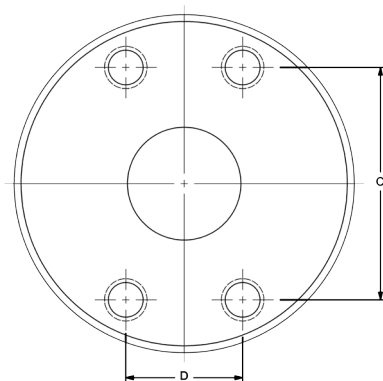
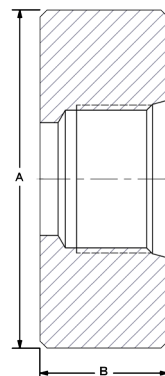
FCM Flat Weld SAE 4-B Companion

Facilitates return lines to reservoir ~ Sizes from 3/4" to 6" SAE/BSP



The FCM is a flat weld SAE 4-Bolt Companion Flange optimized for use as a reservoir outlet connection. An internal thread provides a mounting point for strainer or baffle tube.

- Standard UNC Bolt Holes with NPTF internal port for U.S. Buyers, option of metric bolt holes and BSP, SAE, W4 porting.
- An economical way to incorporate professional looking 4-bolt connections on the reservoir.
- Available in Stainless Steel.
- Suction to 400 PSI.



FCM		Flat Weld Sidewall SAE C.61 Companion			
Port Codes	Port Size	Dimensions IN			
		A	B	C	D
FM GM N W4 S	3/4"	2.75	1.00	1.88	0.88
	1"	3.00	1.13	2.06	1.03
	1 1/4"	3.25	1.13	2.31	1.19
	1 1/2"	3.75	1.25	2.75	1.41
	2"	4.50	1.25	3.06	1.69
	2 1/2"	5.00	1.25	3.50	2.00
	3"	6.00	1.50	4.19	2.44
	4"	7.00	1.50	5.13	3.06

Ordering Codes

FCM - ** FM - ** S - 1 1

Null	
Code	Description
This code is always "1"	

First Size Code	
Code	Port Size
07	3/4"
10	1"
12	1 1/4"
15	1 1/2"
20	2"
25	2 1/2"
30	3"
40	4"
50	5" - Call
60	6" - Call

C.61 Comp Side	
Code	Description
FM	C.61 4B UNC (U.S. Std)
GM	C.61 4B Metric Bolts

Choose Adapter Size

Replace ** with the desired adapter size.

Two different size codes selects step size option.

Second Size Code	
Code	Port Size
07	3/4"
10	1"
12	1 1/4"
15	1 1/2"
20	2"
25	2 1/2"
30	3"
40	4"
50	5" - Call
60	6" - Call

Internal Conn-F	
Code	Description
N	NPT-F (standard)
W4	Sch. 40 Socket Weld
S	SAE-F ORB

Alternate Thread Standard

Replace the "S" SAE ORB standard thread connection with a choice from the "Thread Side" table. Please call to confirm price and availability.

Alternate Weld Connection Standard

DMIC does not offer any alternate weld connections for the FCM model flat weld adapter.

Adapter Material	
Code	Description
1	Low Carbon Steel
2	Stainless Steel

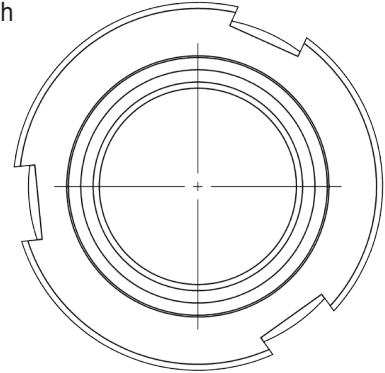
SFW Swivel Flat Weld to Thread

Flat weld mounts to reservoir ~ Sizes from 3/4" to 6" SAE/BSP

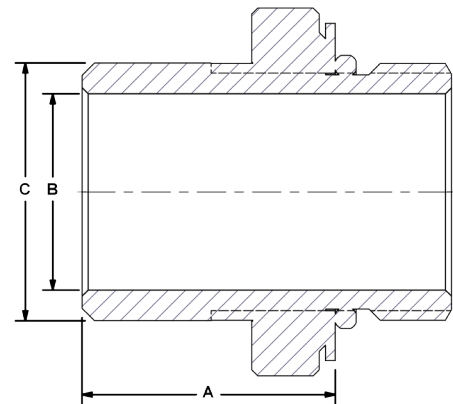


The **SFW** provides similar functionality to the SNS adapters (pg. 28) in a flat weld mount style. Available with in SAE O-Ring, and BSP.

- Swivel design with lock ring permits precise alignment on threaded side after weld complete.
- Valves can be absent during welding to eliminate contamination and heat damage.
- Reduced labor requirement and improved repeatability for both low volume and mass production projects.
- Made in USA for fast delivery and top quality.
- Suction to 400 PSI.



SFW		Flat Weld to SAE/BSP Thread, Swivel		
		Port Size	Dimensions IN	
Port Codes			A	B
S B	3/4"	1.29	0.75	1.06
	1"	1.28	1.00	1.31
	1¼"	1.40	1.25	1.63
	1½"	1.40	1.50	1.88
	2"	1.40	2.00	2.50
	2½"	1.48	2.50	3.00
	3"	1.65	3.00	4.00
	4"	1.65	4.00	5.00



Ordering Codes

SFW - ** S - 1 1

Size Code	
Code	Port Size
07	3/4"
10	1"
12	1 1/4"
15	1 1/2"
20	2"
25	2 1/2"
30	3"
40	4"
50	5" - Call
60	6" - Call

External Thread-M	
Code	Description
S	Swivel SAE-M ORB
B	Swivel BSPP-M

Adapter Material	
Code	Description
1	Low Carbon Steel
2	Stainless Steel

Seal Material	
Code	Description
1	Buna-N (standard)
2	Ethylene Propylene "EPR"
3	Viton

Choose Adapter Size

Replace ** with the desired adapter size.

Two different size codes selects step size option.

Alternate External Thread Standard

Replace the "S" SAE ORB standard thread connection with a choice from the "Thread Side" table. Please call to confirm price and availability.

Alternate Weld Connection Standard

DMIC does not offer any alternate weld connections for the SFW model adapter. For a Socket Weld variation, see SSW on page 7.



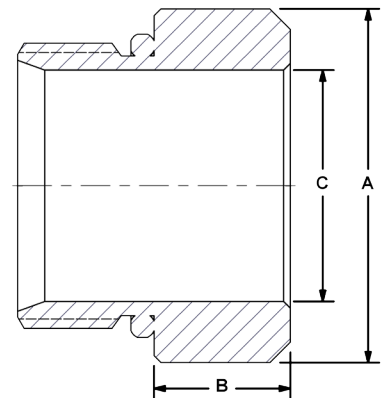
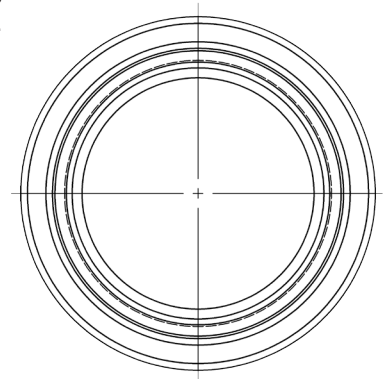
FFW Basic Flat Weld to Thread

Flat weld mounts to reservoir ~ Sizes from 3/4" to 6" SAE/BSP



The **FFW Fixed Flat Weld** adapter provides much of the functionality of SFW without the swivel feature. For flat weld applications, see the complete array of Reservoir Weld adapters starting on page 28.

- Valves can be absent during welding to eliminate contamination and heat damage.
- Reduced skilled labor requirement and improved repeatability for all skill classes.
- Made in USA for fast delivery and top quality in sizes up to 6".
- Suction to 400 PSI.



FFW	Basic Flat Weld to SAE/BSP Thread			
	Port Size	Dimensions IN		
		A	B	C
S B	3/4"	1.38	0.63	0.75
	1"	1.63	0.63	1.06
	1 1/4"	2.00	0.63	1.25
	1 1/2"	2.25	0.63	1.50
	2"	2.75	0.63	2.00
	2 1/2"	3.38	0.63	2.50
	3"	4.00	0.75	3.00
	4"	5.00	0.75	4.00

Ordering Codes

FFW - ** S - 1 1

Size Code	
Code	Port Size
07	3/4"
10	1"
12	1 1/4"
15	1 1/2"
20	2"
25	2 1/2"
30	3"
40	4"
50	5" - Call
60	6" - Call

External Thread-M	
Code	Description
S	SAE-M ORB
B	BSPP-M

Choose Adapter Size
Replace ** with the desired adapter size.

Adapter Material	
Code	Description
1	Low Carbon Steel
2	Stainless Steel

O-Ring Elastomer	
Code	Description
1	Buna-N (standard)
2	Ethylene Propylene "EPR"
3	Viton

Alternate External Thread Standard

Replace the "S" SAE ORB standard thread connection with a choice from the "Thread Side" table. Please call to confirm price and availability.

Alternate Weld Connection Standard

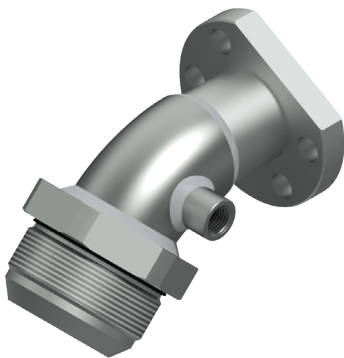
DMIC does not offer any alternate weld connections for the FFW model adapter. For a Socket Weld variation, see SSW on page 7.



Custom SSW

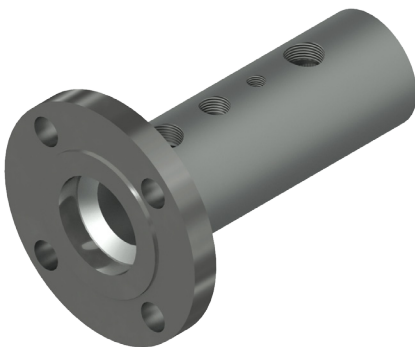
DMIC creates custom SSW components

When designing a Hydraulic Power Unit (HPU), some of the main problems designers face is space constraints and leak points. At DMIC we listened to the customer and offered our SSW components line. What is not well known is that you can also get these as completely custom fittings for each unique HPU. Whether we machine the part complete or weld together the one off design, reducing connection points in your plumbing of your system is where our custom SSW's have excelled.



DMIC offers a wide array of possibilities in order to design that fitting you're looking for in your system. There is that connection that is almost like something we offer but with a different connection type. Simply supply your DMIC inside sales representative with the size, length, connection types and material selection and our Engineering staff will supply a product print for your approval. If you do not see it in the catalog, please give us a call or send us an email so we can discuss the application. We can supply models in any CAD format for your design team to check fitment in the system before fabrication takes place to prevent any errors at the assembly phase.

DMIC can create custom SSW components

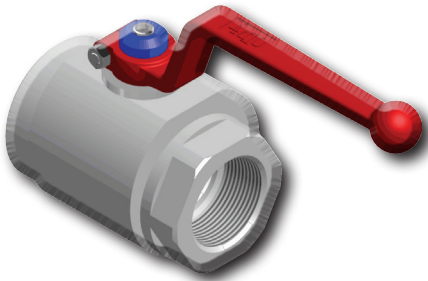


Selecting the inputs for your custom fitting is the first part of our customization, as we can add additional features such as ports for temperature or pressure gauges, extended runs of pipe In Line tees and Y's, custom flanges, jump sizes, and integrated ball valves in a wide array of materials or coatings required to suit your need. Reference pages 4 and 5 to help start construction of the needs your HPU requires and supply additional information to help construct the rest for you. Rely on DMIC to provide the right custom solution no matter what it may be, when you cannot find it anywhere else!



'BVAL' Low Pressure

Ideal from suction to 400 PSI; NPT/SAE/6149/BSP;
Optimized for DMIC's "SSW" System - All sizes unrestricted bore.



Most large bore valves sold in the hydraulic market today are simply "plumbing" valves, suitable primarily for low pressure, cold water use. DMIC's 'BVAL' is the first ball valve of its kind, specifically designed for leak-free Hydraulic Suction, Vacuum to 29" & Return line durability to 6" full bore.

- Built to take the pressure spikes, temperatures, & elevated demands of hydraulic service.
- Uses top grade ball seals, with O-Ring sealing throughout.
- Suitable for actuation and panel mounting and accepts the full range of DMIC Ball Valve Accessories & Actuation Packages.
- A reliable choice for Phosphate Esters, Water Glycols and other unusual media.

Ordering Codes Summary

See www.DMIC.com for accessory codes

BVAL - **** S - 4 3 1 1 * * * * *

Size Codes	
Code	Port Size
0250	1/4"
0375	3/8"
0500	1/2"
0750	3/4"
1000	1"
1250	1 1/4"
1500	1 1/2"
2000	2"
2500	2 1/2"
3000	3"
4000	4"
5000	5"
6000	6"

Connection Types	
Imperial Threads	
Code	Description
S	SAE ORB
N	NPT
Metric Threads	
B	BSPP
T	BSPT (Tapered Pipe)
W4	Sch. 40 Socket Weld
Flanged	
AA	Class 150# (275 PSI @ 100°F)
FM	C. 61 SAE 4-Bolt UNC
GM	C.61 SAE 4-Bolt Metric
SM	C.61 SAE Split
CM	SAE Flange/Split Combo

O-Ring Material	
Code	Description
1	Buna-N (Standard)
2	EPR
3	Viton

Seals, Bushings, Washers	
Code	Description
1	Delrin
2	PTFE Teflon
4	High Temp PEEK
6	Delrin AF (Low Friction)

Ball & Spindle Material	
Code	Description
3	Brass

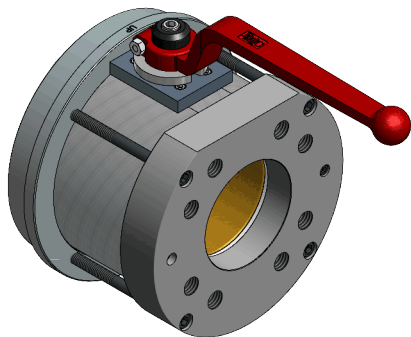
Body Material	
Code	Description
4	Aluminum

Call Factory for
larger sizes 8"+



'BVALP' Low Profile Suction

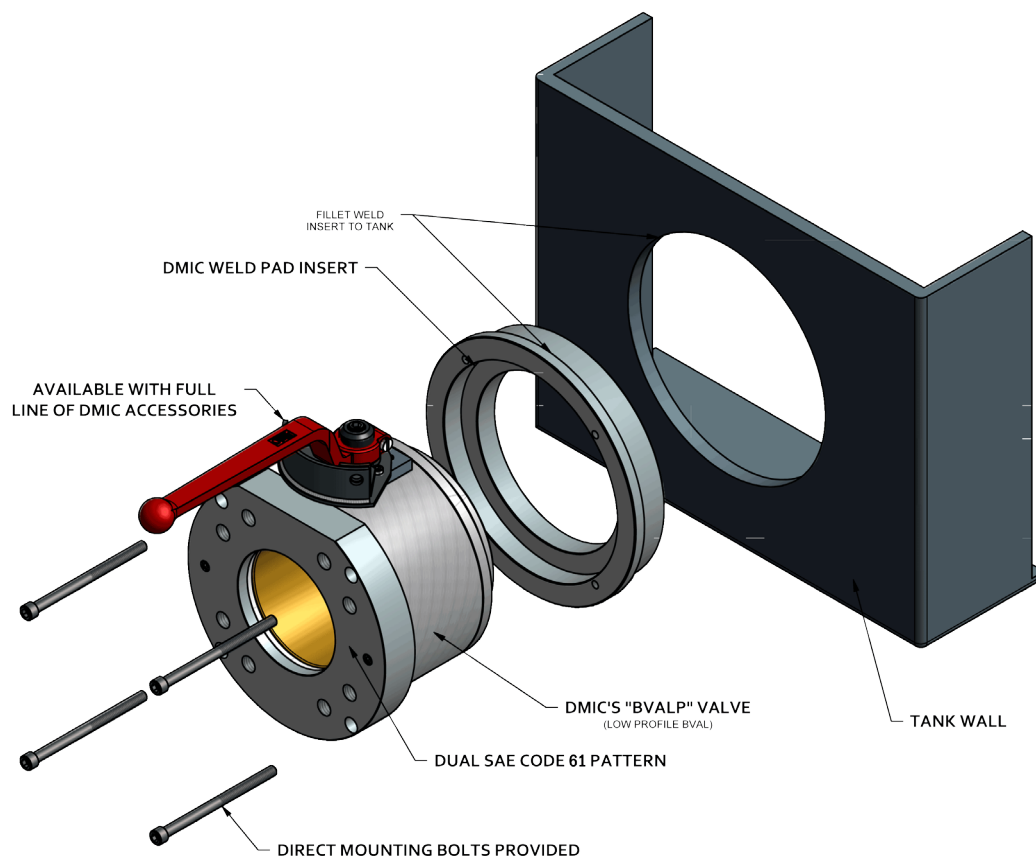
Ideal from suction to atmospheric pressure
Optimized for DMIC's "SSW" System - All sizes unrestricted bore.



Similar to DMIC's BVAL product line, but its smaller profile allows for mounting in tight spaces. Whether you're building a new system with a tight space constraint on a valve or are looking to replace your unreliable gate or butterfly valve, make DMIC's BVALP valve your only choice.

- Bore sizes range from 1"- 5", other sizes available upon request.
- Tank mounted flange for weldment and removable ball valve provided.
- Available directly with suction line filter port.
- Capable of handling up to 250 PSI.
- SAEC.61 Companion Mounting pattern provided (standard) with additional connection availability.
- Special bolt kit required (Sold Separately).

Valve Installation Guide



Sizes	
Valve Size	Hole Size
10	3.00"
12	3.75"
15	4.25"
20	5.00"
25	6.00"
30	7.00"
40	8.00"



ISO 9001 CERTIFIED

www.dmic.com
DMIC Flange Catalog
Copyright ©2022 Delaware Mfg.

SSW-2207
Page 39

Call Toll Free 1-800-248-3642
In Canada 1-800-320-3642

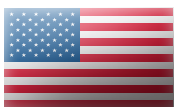


SAVE TIME AND MONEY WITH THE “SSW” SYSTEM

~ The Quality Choice when Safety and Design Integrity Prevail over Price ~



WE CARE ABOUT YOU. You've selected genuine DMIC quality, and you deserve the best service.
If you are unsatisfied about some aspect of your experience with DMIC products, or wish to inquire about the possibility of becoming a DMIC Distributor, please call us. Your satisfaction is our first priority.



3776 Commerce Court
Wheatfield, NY U.S.A. 14120
Phone: 716-743-4360
Fax: 716-743-4370



330 Vansickle Road—Unit 4
St. Catharines, Ontario, Canada L2S 0B4
Phone: 905-688-3642
Fax: 905-688-9993