

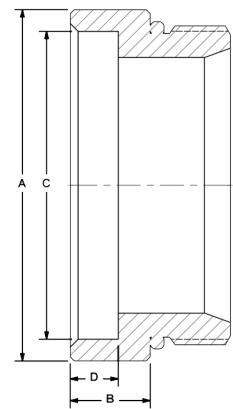
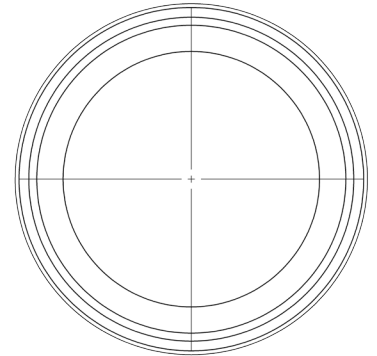
FSW Fixed Socket Weld

Pipe/Tube to SAE/BSP thread ~ Sizes from 3/4" to 6"



The FSW Fixed Socket Weld adapter provides the functionality of SSW without the swivel feature. For flat weld applications, see the complete array of Reservoir Weld adapters starting on page 26.

- Valves can be absent during welding to eliminate contamination and heat damage.
- Reduced labor requirement and improved repeatability result in better quality power units.
- Made in U.S.A. for fast delivery and top quality in sizes up to 6" (Suction to 400 PSI).



FSW	Socket Weld to SAE/BSP Thread, Non-Swivel				
	Port Codes	Port Size	Dimensions IN		
		A	B	C	D
W4 HT MP MT S B	3/4"	1.38	0.63	1.09	0.38
	1"	1.63	0.63	1.35	0.38
	1 1/4"	2.00	0.63	1.69	0.38
	1 1/2"	2.25	0.63	1.95	0.38
	2"	2.75	0.63	2.41	0.38
	2 1/2"	3.38	0.63	2.91	0.38
	3"	4.00	0.75	3.54	0.50
	4"	5.00	0.75	4.54	0.50

Ordering Codes

FSW - ** W4 - ** S - 1 1

First Size Code	
Code	Port Size
07	3/4"
10	1"
12	1 1/4"
15	1 1/2"
20	2"
25	2 1/2"
30	3"
40	4"
50	5" - Call
60	6" - Call

Socket Weld Side	
Code	Description
W4	Sch. 40 Pipe (standard)
HT	Hyd Tube (SAE J524 Type)
MP	Metric Pipe
MT	Metric Tube

Choose Adapter Size
Replace ** with the desired adapter size.
Two different size codes selects step size option.

Second Size Code	
Code	Port Size
07	3/4"
10	1"
12	1 1/4"
15	1 1/2"
20	2"
25	2 1/2"
30	3"
40	4"
50	5" - Call
60	6" - Call

Thread Side	
Code	Description
S	SAE ORB (Standard)
B	BSPP

Alternate Thread Standard
Replace "S" SAE ORB standard thread connection with a choice from the "Thread Side" Table. Please call to confirm price and availability.

Alternate Weld Connection Standard
Replace the "W4" standard weld connection with a choice from the "Weld Side" table. Please call to confirm price and availability.

O-Ring Elastomer	
Code	Description
1	Buna-N (standard)
2	Ethylene Propylene "EPR"
3	Viton

Adapter Material	
Code	Description
1	Low Carbon Steel
2	Stainless Steel

