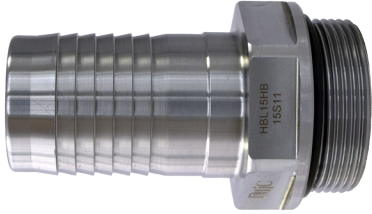


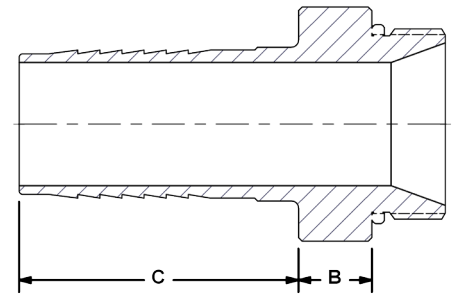
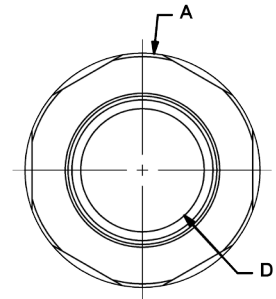
HBL Barb to Thread

Terminate to hose with this O-Ring sealed "staple" adapter

DMIC's HBL continues an O-ring sealed pipe run onto a U.S. or metric ID hose. Typically used for a segment from shutoff valve to pump inlet.



- Eliminates classic leakage point of "plumbing" NPT hose barbs, reduces cavitation worries.
- Compatibility with SAE extended size ranges allow end-to-end O-Ring seal to 6" size.
- Rapid delivery of stepsize barbs, designers can maintain nominal ID even along hose segments.
- Rapid delivery of valves & adapters up to 4" size.
- Suction to 400 PSI.



HBL		Hose Barb to SAE/BSP Thread Inline			
Port Codes	Port Size	Dimensions IN			
		A	B	C	D
HB HM S B	¾"	1.38	0.63	1.82	0.63
	1"	1.76	0.63	1.81	0.88
	1¼"	2.00	0.63	2.38	1.05
	1½"	2.25	0.63	2.38	1.25
	2"	2.75	0.63	2.82	1.75
	2½"	3.38	0.63	3.38	2.25
	3"	4.00	0.75	3.88	2.75
	4"	5.00	0.75	4.38	3.75

Ordering Codes

HBL - ** HB - ** S - 1 1

O-Ring Elastomer	
Code	Description
1	Buna-N (standard)
2	Ethylene Propylene "EPR"
3	Viton

First Size Code	
Code	Port Size
07	¾"
10	1"
12	1¼"
15	1½"
20	2"
25	2½"
30	3"
40	4"
50	5" - Call
60	6" - Call

Hose Barb Side	
Code	Description
HB	Inch Barb (Standard)
HM	Metric Barb

Choose Adapter Size
Replace ** with the desired adapter size.
Two different size codes selects step size option.

Second Size Code	
Code	Port Size
07	¾"
10	1"
12	1¼"
15	1½"
20	2"
25	2½"
30	3"
40	4"
50	5" - Call
60	6" - Call

Thread Side	
Code	Description
S	SAE ORB (Standard)
B	BSPP

Alternate Hose Barb Connection Standard
Replace the "HB" inch-barb connection (U.S.A.) with metric barb for export. Please call to confirm price and availability.

Alternate Thread Standard
Replace the "S" SAE ORB standard thread connection with a choice from the "Thread Side" table. Please call to confirm price and availability.

Adapter Material	
Code	Description
1	Low Carbon Steel
2	Stainless Steel

Due to our policy of continual product improvement, the specifications in this catalog may change without notice. When designing by spec, please request a certified print.

