

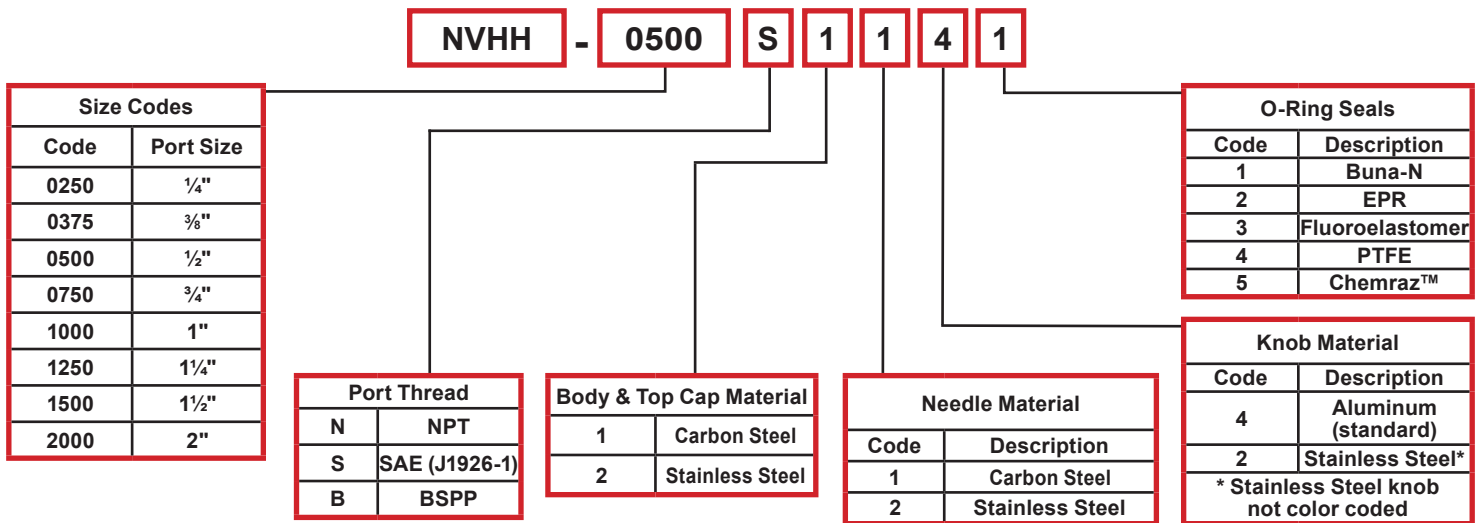
NVHH Needle Valves

Carbon/Stainless Steel Bidirectional flow ~ 1/4" to 2+" for working pressures up to 10,000 PSI



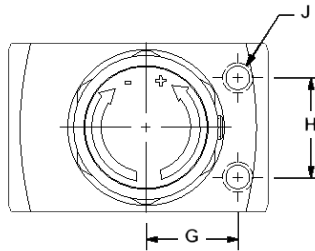
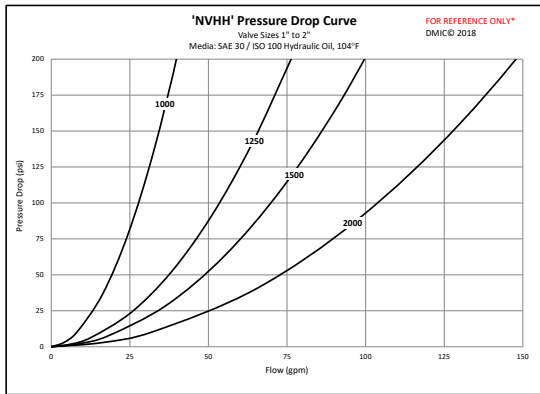
Flow-regulating, steel or stainless steel body needle valves provide metered flow in both directions.

- Choice of carbon steel or stainless steel for body and trim.
- Choice of O-ring materials for fluid compatibility
- Port sizes from 1/4" to 2".
- Choice of threaded connection types.
- Standard panel mounting holes.
- Graduated scale on shaft for visual setup validation.
- Set screw to secure knob for tamper prevention.
- Suitable for use with hydraulic oil.

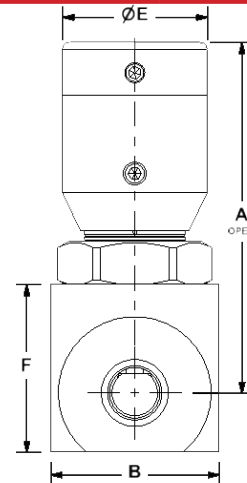
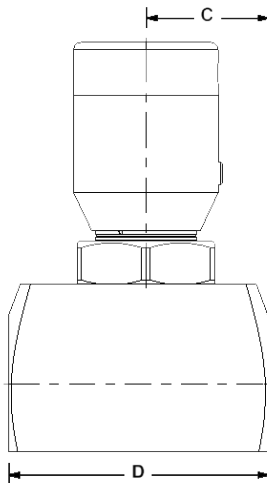
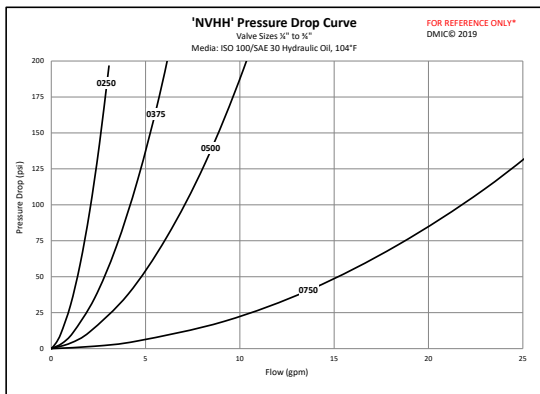


NVHH Needle Valves

NVHH	Nominal Size	Performance Data			Dimensions (inches)								
		Flow GPM	Full Open		A	B	C	D	E	F	G	H	J (UNF UNC)
			Orifice Area (sq.in.)	Effective C _v									
NVHH-0250N	¼"	1.20 GPM	0.012	0.280	3.19	1.38	1.00	2.13	1.18	1.38	0.75	0.81	¼
NVHH-0250B													
NVHH-0250S													
NVHH-0375N	⅜"	2.50 GPM	0.028	0.630	3.25	1.50	1.29	2.44	1.63	1.50	0.88	0.88	¼
NVHH-0375B													
NVHH-0375S													
NVHH-0500N	½"	4.50 GPM	0.049	1.120	3.25	1.75	1.41	2.69	1.63	1.75	1.00	0.88	¼
NVHH-0500B													
NVHH-0500S													
NVHH-0750N	¾"	10 GPM	0.110	2.520	4.02	2.00	1.81	3.50	1.63	2.25	1.00	1.25	¼
NVHH-0750B													
NVHH-0750S													
NVHH-1000N	1"	18 GPM	0.196	4.481	4.18	2.50	2.03	4.00	1.63	2.50	1.25	1.25	⅜
NVHH-1000B													
NVHH-1000S													
NVHH-1250N	1¼"	28 GPM	0.307	7.001	4.83	2.75	2.50	4.50	1.63	3.25	1.50	1.50	⅜
NVHH-1250B													
NVHH-1250S													
NVHH-1500N	1½"	40 GPM	0.442	10.082	6.83	3.50	2.75	5.25	3.00	4.00	2.00	2.00	½
NVHH-1500B													
NVHH-1500S													
NVHH-2000N	2"	70 GPM	0.785	17.92	7.58	4.00	3.25	5.69	3.00	4.75	2.25	2.00	½
NVHH-2000B													
NVHH-2000S													



NVHH Size	Nominal Size	Material	MAWP (PSI)
0250	¼"	Carbon Steel	10,000
		Stainless Steel	6,000
0375	⅜"	Carbon Steel	10,000
		Stainless Steel	6,000
0500	½"	Carbon Steel	10,000
		Stainless Steel	6,000
0750	¾"	Carbon Steel	10,000
		Stainless Steel	6,000
1000	1"	Carbon Steel	10,000
		Stainless Steel	6,000
1250	1¼"	Carbon Steel	10,000
		Stainless Steel	6,000
1500	1½"	Carbon Steel	10,000
		Stainless Steel	6,000
2000	2"	Carbon Steel	10,000
		Stainless Steel	6,000



This valve series is factory sealed and disassembly will destroy the valve and void the warranty. Due to our policy of continual product improvement, the specifications in this catalog may change without notice. When designing by spec, please request a certified print.

