

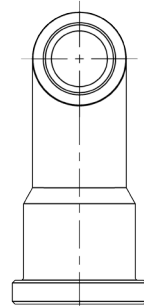
SBE Barb to S/F Head 90°

Properly radiused adapter for tight access to pump inlets

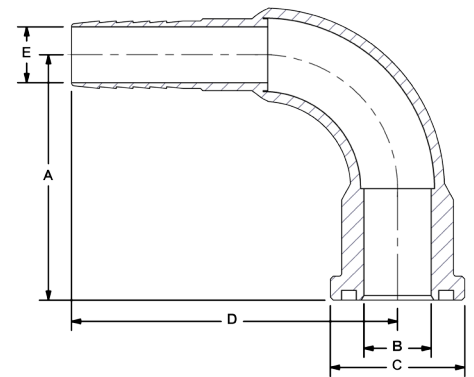


The SBE 90° split to barb elbows are typically used at the inlet of SAE Flange pumps to terminate a suction hose run. Rugged mechanical construction provides durability at a classic power unit leak point.

- Standard SAE Flange Head mounts with C.61 Split.
- Flange Kit to your pump's 4-Bolt Companion Pad.
- Smooth bend radius aids laminar flow and reduces pressure drop.
- Optional oversize barb allows designers to preserve nominal line ID even on the hose segment.
- Suction to 400 PSI.
- Carbon Steel part number, see catalog F04 for other options.



SBE	Barb to Split Flange, 90° Elbow						
	Port Codes	Port Size	Dimensions IN				Split Flange Kit (carbon steel)
A			B	C	D	E	
HB HM SM	¾"	2.75	0.75	1.50	3.69	0.63	FSL-0750SK
	1"	2.75	1.00	1.75	3.69	0.88	FSL-1000SK
	1¼"	3.13	1.25	2.00	4.63	1.00	FSL-1250SK
	1½"	3.50	1.50	2.38	5.00	1.28	FSL-1500SK
	2"	4.25	2.00	2.81	6.19	1.75	FSL-2000SK
	2½"	5.50	2.50	3.31	7.50	2.25	FSL-2500SK
	3"	6.37	3.00	4.00	8.75	2.75	FSL-3000SK
	4"	7.75	4.00	5.00	10.75	3.75	FSL-4000SK



Ordering Codes

SBE - ** HB - ** SM - 1 1

Null	
Code	Description
	This code is always "1"

First Size Code	
Code	Port Size
07	¾"
10	1"
12	1¼"
15	1½"
20	2"
25	2½"
30	3"
40	4"
50	5" - Call
60	6" - Call

Hose Barb Side	
Code	Description
HB	Inch Barb (Standard)
HM	Metric Barb

Choose Adapter Size
Replace ** with the desired adapter size.
Two different size codes selects step size option.

Second Size Code	
Code	Port Size
07	¾"
10	1"
12	1¼"
15	1½"
20	2"
25	2½"
30	3"
40	4"
50	5" - Call
60	6" - Call

Split Flange Side	
Code	Description
SM	C.61 Split Flange Head

Adapter Material	
Code	Description
1	Low Carbon Steel
2	Stainless Steel

Metric Hose Barb Connection
Adapters supplied in metric market locales use metric-barb IDs. Please call to confirm price and availability.

