

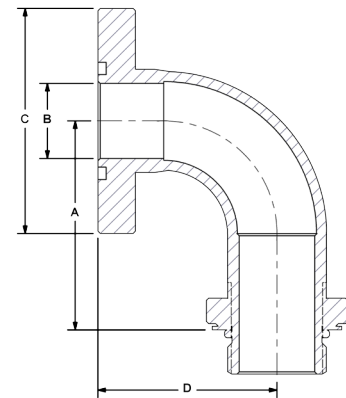
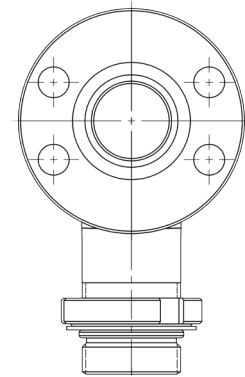
SFE SAE 4B Standard to Thread 90°

Convert low pressure SAE/BSP thrd to SAE 4-Bolt standard pad



The SFE converts standard/extended threaded ports to SAE 4-Bolt Standard connection with properly radiused 90 degree bend, aiding laminar flow through the fluid direction change. Available in Stainless Steel.

- Fast and economical conversion to SAE 4-Bolt standard, its UNC (imperial) and Metric Bolts.
- Reliable mechanical base for your SAE C.61 Split Flange terminated pipe or hose.
- Swivel permits proper adapter orientation.
- Suction to 400 PSI.



SFE		C.61 4B Standard to SAE/ BSP Thread 90°			
		Dimensions IN			
Port Codes	Port Size	A	B	C	D
FL AA S B	¾"	2.79	0.75	2.75	2.38
	1"	2.79	1.00	3.00	2.38
	1¼"	3.28	1.25	3.38	2.76
	1½"	3.65	1.50	3.75	3.13
	2"	4.40	2.00	4.25	3.88
	2½"	5.21	2.50	4.75	4.75
	3"	6.17	3.00	5.75	5.50
	4"	7.67	4.00	7.00	7.00

Ordering Codes

SFE - ** FL - ** S - 1 1

O-Ring Elastomer	
Code	Description
1	Buna-N (standard)
2	Ethylene Propylene "EPR"
3	Viton

First Size Code	
Code	Port Size
07	¾"
10	1"
12	1¼"
15	1½"
20	2"
25	2½"
30	3"
40	4"
50	5" - Call
60	6" - Call

Split Flange Side	
Code	Description
FL	C.61 4B Std. Universal
AA	ANSI 150 #

Choose Adapter Size
Replace ** with the desired adapter size.
Two different size codes selects step size option.

Second Size Code	
Code	Port Size
07	¾"
10	1"
12	1¼"
15	1½"
20	2"
25	2½"
30	3"
40	4"
50	5" - Call
60	6" - Call

Thread Side	
Code	Description
S	SAE ORB (Standard)
B	BSPP

Universal Bolt Holes

The SAE 4-Bolt standard pad is drilled nominally oversize to permit the use of UNC or Metric bolts.

Alternate Thread Standard

Replace the "S" SAE ORB standard thread connection with a choice from the "Thread Side" table. Please call to confirm price and availability.

Adapter Material	
Code	Description
1	Low Carbon Steel
2	Stainless Steel

