

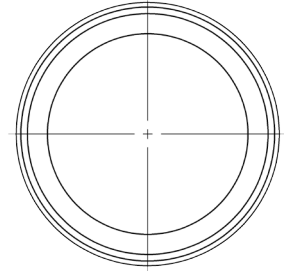
SW-BARB

Hose BARB by Butt Weld

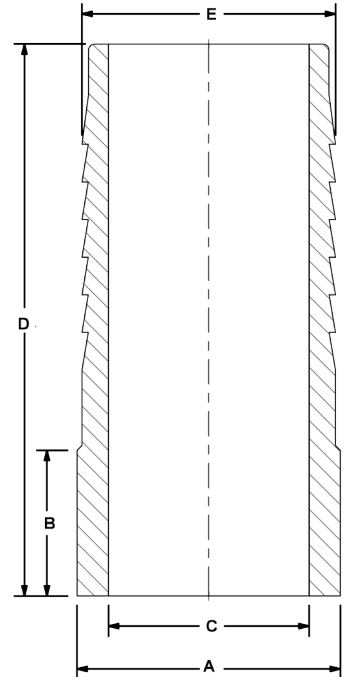


The SW-BARB allows for custom designs or weldments to achieve a non-standard fitting for a system. These Hose Barbs are available in Carbon or Stainless Steel.

- Hose BARB for welding (Butt Weld).
- Available in low carbon steel, 316 or 304 Stainless Steel.
- Sch to Butt Weld schedule 40.
- Suction to 400PSI.
- 3/4" up to 6".



Hose BARB, by Butt Weld					
Port Size	Dimensions IN				
	A	B	C	D	E
3/4"	0.81	0.73	0.63	2.19	0.76
1"	1.06	0.73	0.88	2.19	1.02
1 1/4"	1.31	0.73	1.00	2.75	1.27
1 1/2"	1.56	0.73	1.29	2.75	1.52
2"	2.12	0.70	1.75	3.19	2.02
2 1/2"	2.57	0.72	2.25	3.75	2.52
3"	3.06	0.73	2.80	4.25	3.02



Ordering Codes

SW-BARB - ***** - *1

Size Code	
Code	Port Size
0750W	3/4"
1000W	1"
1250W	1 1/4"
1500W	1 1/2"
2000W	2"
2500W	2 1/2"
3000W	3"
4000W	4" - Call
5000W	5" - Call
6000W	6" - Call

Adapter Material	
Code	Description
11	Low Carbon Steel
21	Stainless Steel

Choose Adapter Size
Replace ***** with the desired adapter size.

Alternate External Thread Standard

Replace the "S" SAE ORB standard thread connection with a choice from the "Thread Side" table. Please call to confirm price and availability.

Alternate Weld Connection Standard

DMIC does not offer any alternate weld connections for the FFW model adapter. For a Socket Weld variation, see SSW on page 7.

Due to our policy of continual product improvement, the specifications in this catalog may change without notice. When designing by spec, please request a certified print.



ISO 9001 Certified

www.dmic.com
DMIC SSW Catalog
Copyright ©2020 Delaware Mfg.

SSW-ADD-2101
Page 8

Call Toll Free 1-800-248-3642
In Canada 1-800-320-3642

