

SWEL 45° Butt Weld Elbow

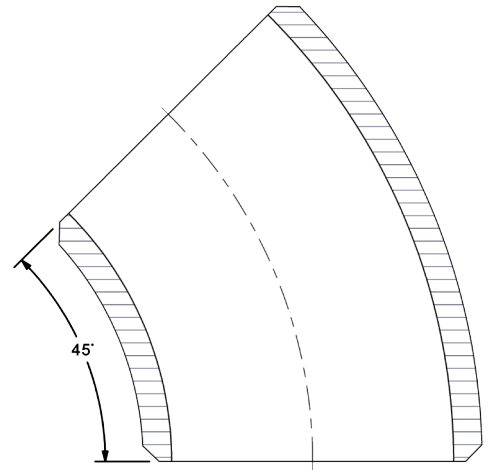
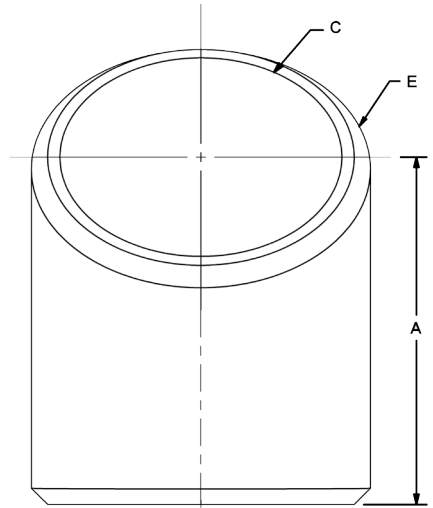
SWEL 45° for Custom Design



SWEL 45° for Custom Design and weldments to achieve a non-standard fitting for your system.

- SWEL 45 Weld Elbow
- Butt Weld Sch 400
- Suction to 400 PSI
- Available in Carbon Steel & Stainless Steel
- 3/4" up to 6"

SWEL 45 Butt Weld Elbow				
Port Size	Dimensions IN			
	A	C	E	Degree
3/4"	1.82	0.82	3.30	90
1"	1.76	1.05	4.15	90
1 1/4"	2.19	1.38	5.22	90
1 1/2"	2.64	1.61	5.97	90
2"	3.55	2.07	7.48	90
2 1/2"	4.48	2.47	9.05	90
3"	5.35	3.07	11.00	90



Ordering Codes

SWEL45 - ***** - *1

Size Code	
Code	Port Size
0750W	3/4"
1000W	1"
1250W	1 1/4"
1500W	1 1/2"
2000W	2"
2500W	2 1/2"
3000W	3"
4000W	4" - Call
5000W	5" - Call
6000W	6" - Call

Choose Adapter Size
Replace ***** with the desired adapter size.

Adapter Material	
Code	Description
11	Low Carbon Steel
21	Stainless Steel

Alternate External Thread Standard

Replace the "S" SAE ORB standard thread connection with a choice from the "Thread Side" table. Please call to confirm price and availability.

Alternate Weld Connection Standard

DMIC does not offer any alternate weld connections for the FFW model adapter. For a Socket Weld variation, see SSW on page 7.



www.dmic.com
DMIC SSW Catalog
Copyright ©2020 Delaware Mfg.

ISO 9001 Certified

