

SWEL 90° Butt Weld Elbow

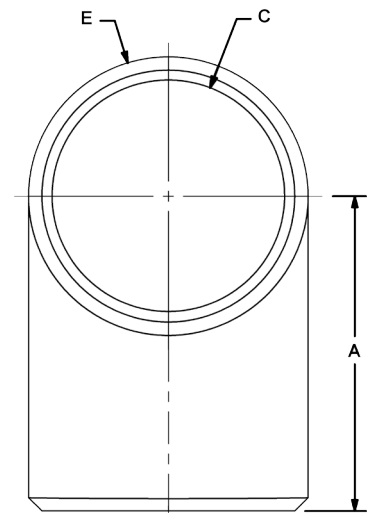
SWEL 90° for Custom Design

SWEL 90° for Custom Design and weldments to achieve a non-standard fitting for your system.



- SWEL Elbow - Long Radius
- Add SR for Short Radius
- Butt Weld Schedule 40
- For Custom Weld Applications
- Suction to 400PSI
- Carbon Steel & Stainless Steel

SWEL 90 Butt Weld Elbow				
Port Size	Dimensions IN			Degree
	A	C	E	
¾"	1.82	0.82	3.30	90
1"	1.76	1.05	4.15	90
1¼"	2.19	1.38	5.22	90
1½"	2.64	1.61	5.97	90
2"	3.55	2.07	7.48	90
2½"	4.48	2.47	9.05	90
3"	5.35	3.07	11.00	90



Ordering Codes

SWEL90 - ***** - *1 - SR

Size Code	
Code	Port Size
0750W	¾"
1000W	1"
1250W	1¼"
1500W	1½"
2000W	2"
2500W	2½"
3000W	3"
4000W	4" - Call
5000W	5" - Call
6000W	6" - Call

Adapter Material	
Code	Description
11	Low Carbon Steel
21	Stainless Steel

Add for Short Radius

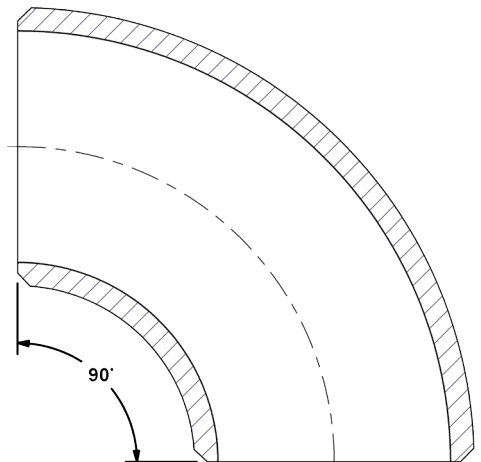
Choose Adapter Size
Replace ***** with the desired adapter size.

Alternate External Thread Standard

Replace the "S" SAE ORB standard thread connection with a choice from the "Thread Side" table. Please call to confirm price and availability.

Alternate Weld Connection Standard

DMIC does not offer any alternate weld connections for the FFW model adapter. For a Socket Weld variation, see SSW on page 7.



Due to our policy of continual product improvement, the specifications in this catalog may change without notice. When designing by spec, please request a certified print.



www.dmic.com
DMIC SSW Catalog
Copyright ©2020 Delaware Mfg.

SSW-ADD-2101
Page 10

Call Toll Free 1-800-248-3642
In Canada 1-800-320-3642

